
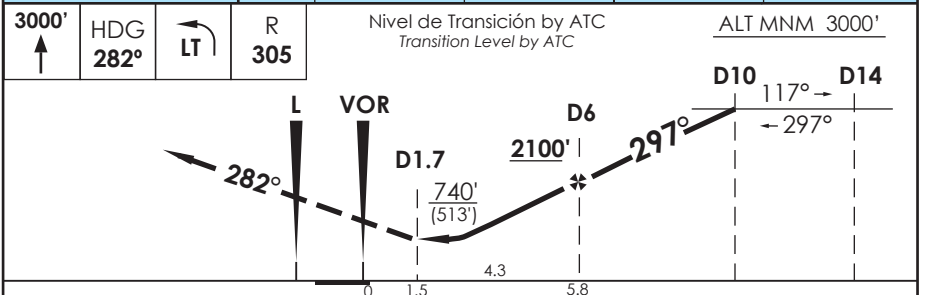
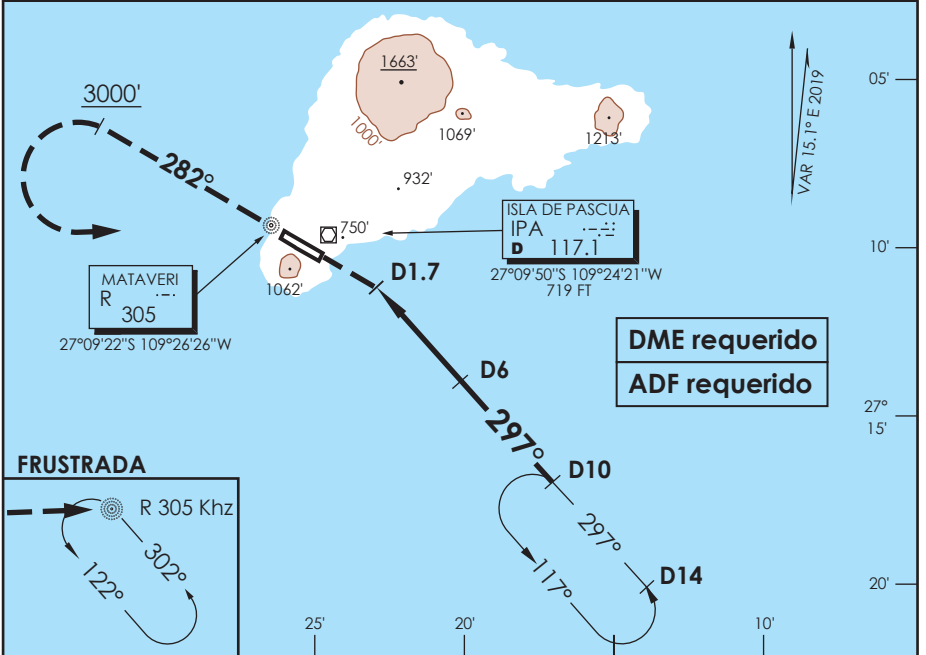


AP. MATAVERI ISLA DE PASCUA - CHILE

SCIP IAC 5
VOR Z Rwy 28

APP PASCUA Pascua Approach		127.3/118.1	TORRE PASCUA Pascua Tower		118.1	CONTROL TERRESTRE Ground Control		121.9
VOR IPA 117.1	FINAL APCH CRS 297°	MNM ALT D 6.0 2100'	MDA(H) 740'(513')		AD Elev. 227'	THR 28 Elev. 227'		 MSA 25 NM IPA
APCH FRUSTRADA: Ascenso a 3000' HDG 282° L "R", viraje izquierda directo a L "R", ingrese en HLDG 302° izquierda según autorización ATC. Missed Apch: Climb to 3000' on HDG 282° "R" L, turn left direct to "R" L, enter HLDG 302° left then according to ATC clearance.								



Categoría	DIRECTO RWY 28 <i>Straight in RWY 28</i>		CIRCULANDO Circling	ALTN Alternate Minimums	
	MDA 740' (513')				
	A	1.6 Km		NA	VER PAG. GEN 2.19
	B				
C	2.4 Km				
D					

VOR/DME INSTALADO SOBRE TERRENO ALTO, ELEV TOTAL 750 FT
 VOR/DME installed over high terrain, total elevation 750 FT

Veloc. Terrestre Kts	80	100	120	140	160
Angulo DES 2.96° FPM	419'	524'	628'	733'	838'
Dist.FAF a MAPT 4.3 NM	3:14	2:35	2:09	1:51	1:37