
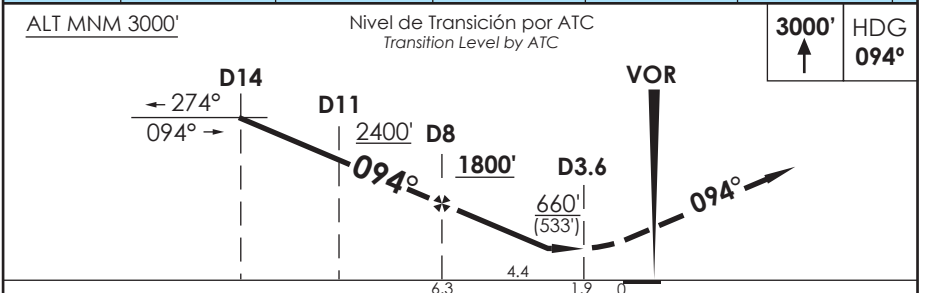
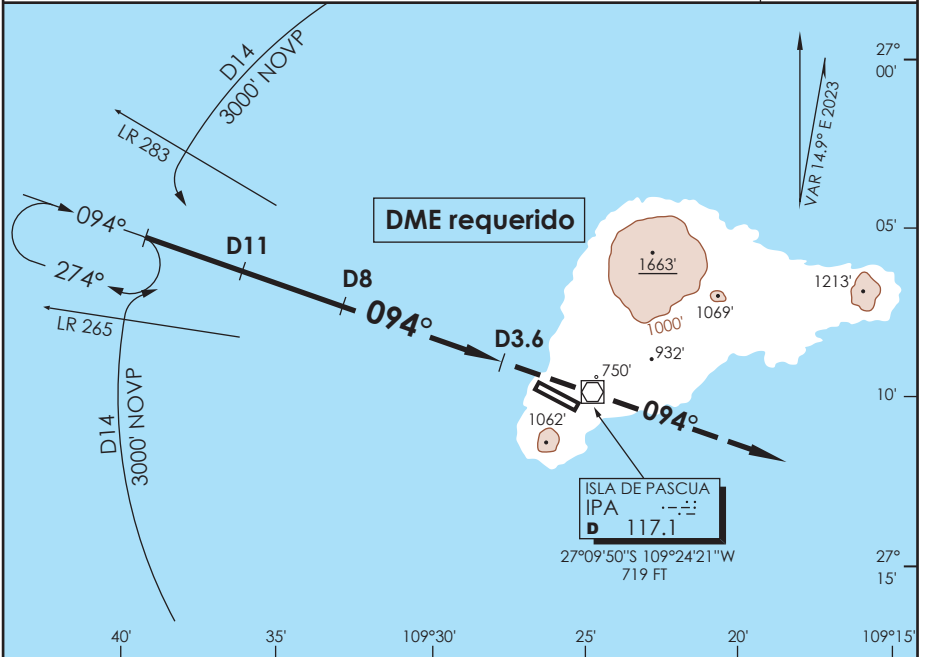


AP. MATAVERI  
**ISLA DE PASCUA - CHILE**

SCIP IAC 3  
**VOR Rwy 10**

APP PASCUA Pascua Approach		127.3/118.1	TORRE PASCUA Pascua Tower		118.1	CONTROL TERRESTRE Ground Control		121.9
VOR IPA <b>117.1</b>	FINAL APCH CRS <b>094°</b>	MNM ALT D 8.0 <b>1800'</b>	MDA(H) <b>660'(533')</b>	AD Elev. <b>227'</b>	THR 10 Elev. <b>127'</b>	 MSA 25 NM IPA		
APCH FRUSTRADA: Ascenso a 3000' HDG 094°, luego según autorización ATC. Missed Apch: Climb to 3000' on HDG 094°, then according to ATC clearance.								



CATEGORIA	DIRECTO RWY 10 <i>Straight in RWY 10</i>		CIRCULANDO <i>Circling</i>	ALTN <i>Alternate Minimums</i>
	MDA <b>660' (533')</b>			
	SSALF	WO SSALF		
A	1.2 Km	1.6 Km	NA	VER PAG. GEN 2.19
B				
C	2.0 Km	2.4 Km		
D				

Veloc. Terrestre Kts	80	100	120	140	160
Angulo DES 2.42° FPM	342'	428'	514'	599'	685'
Dist. FAF a MAPT 4.4 NM	3:18	2:38	2:12	1:53	1:39

CAMBIO: NR IAC / VAR  
 Change: NR IAC / VAR

DGAC AMDT 95

30 NOVIEMBRE 2023

DASA / SECCION AIS-MAP