
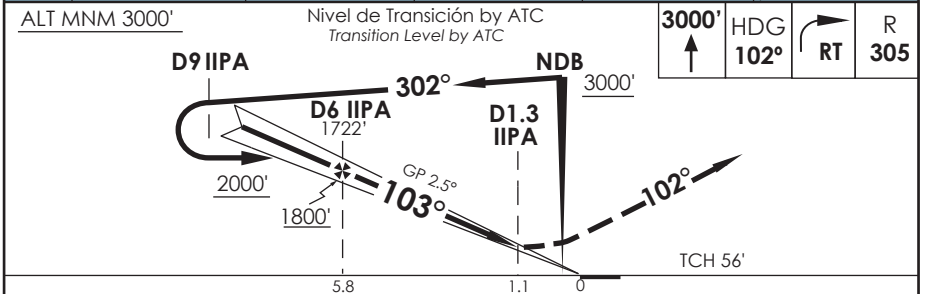
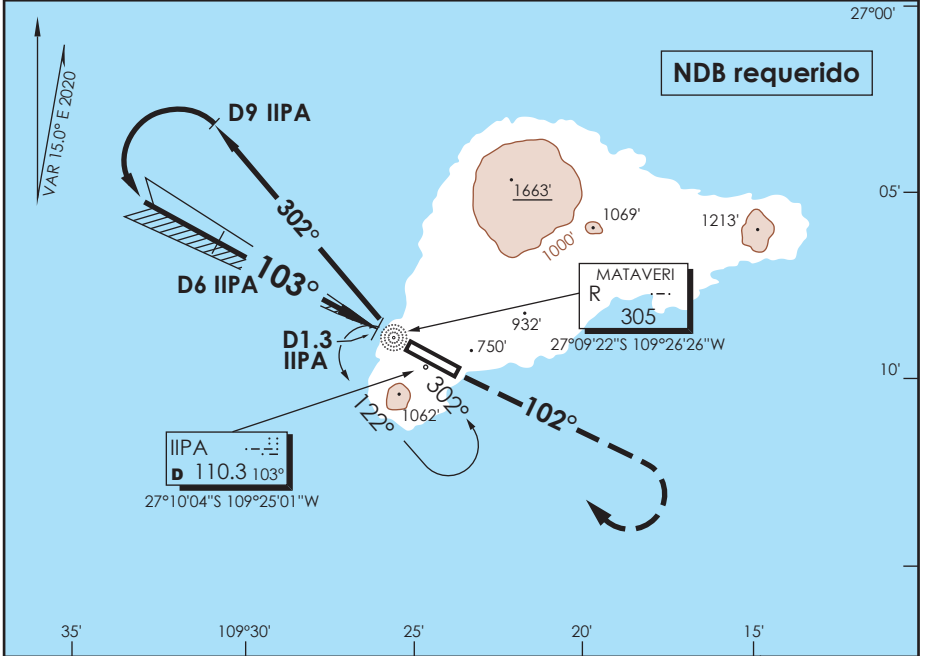


AP. MATAVERI  
**ISLA DE PASCUA - CHILE**

SCIP IAC 2  
**ILS Y Rwy 10**

APP PASCUA Pascua Approach		127.3/118.1	TORRE PASCUA Pascua Tower		118.1	CONTROL TERRESTRE Ground Control		121.9
LOC IIPA <b>110.3</b>	FINAL APCH CRS <b>103°</b>	MNM ALT D 6.0 <b>1800'</b>	DA(H) <b>480'(353')</b>	AD Elev. THR 10 Elev.	<b>227'</b>	 MSA 25 NM IPA		
APCH FRUSTRADA: Ascenso 3000' HDG 102°, luego viraje derecha directo L "R" o según autorización ATC. Missed Apch: Climb to 3000' on HDG 102°, right turn direct to L "R" or according to ATC clearance.								



ALT MNM 3000'		Nivel de Transición by ATC Transition Level by ATC		3000'	HDG 102°	RT	R 305	
DIRECTO RWY 10 <i>Straight in RWY 10</i> * ILS DA <b>480' (353')</b>				* LOC WO GP MDA <b>580' (453')</b>		CIRCULANDO Circling	ALTN Alternate Minimums	
SSALF		WO SSALF		SSALF		WO SSALF		
A					1.2 Km		1.6 Km	
B	1.2 Km		1.6 Km		NA		VER PAG. GEN 2.19	
C								
D								

LOC desalineado 0.9° respecto a eje de RWY / LOC offset 0.9° from RWY center line  
 \*WO IIPA DME PROC NA / Procedure not authorized without IIPA DME

Veloc. Terrestre Kts	80	100	120	140	160
GP 2.5° FPM	354'	442'	531'	619'	707'
Dist.FAF a MAPT 4.7 NM	3:32	2:49	2:21	2:01	1:46