

AP. MATAVERI ISLA DE PASCUA - CHILE

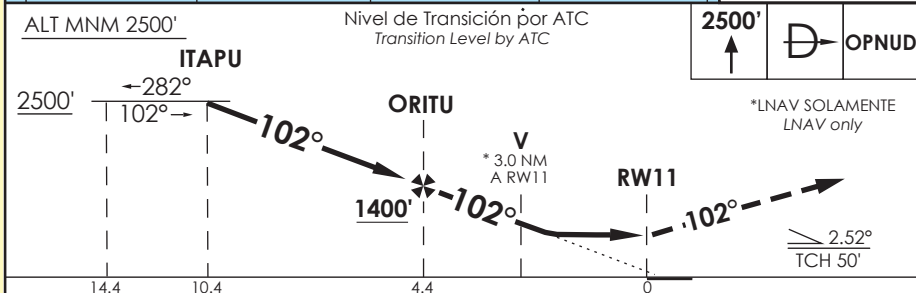
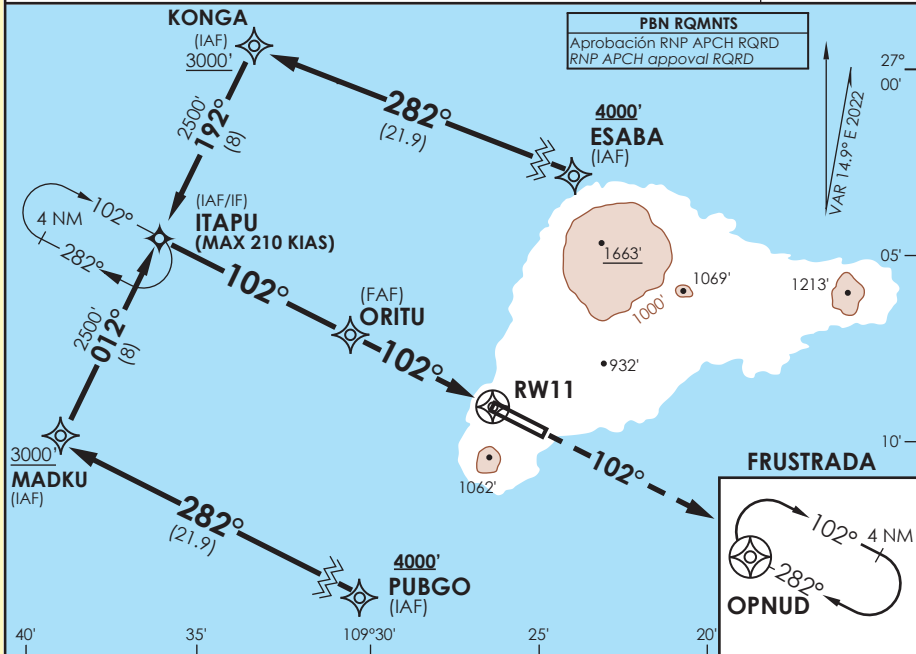
SCIP IAC 19
RNP Y Rwy 11

APP PASCUA Pascua Approach	127.3/118.1	TORRE PASCUA Pascua Tower	118.1	CONTROL TERRESTRE Ground Control	121.9
RNP	FINAL APCH CRS 102°	MNM ALT ORITU 1400'	LNAV/VNAV DA(H) 820'(693')	AD Elev. THR 11 Elev.	227' 164'

APCH FRUSTRADA: Ascenso 2500' directo a OPNUD e ingrese a HLDG 282° derecha o segun autorización ATC.

Missed Apch: Climb to 2500' direct to OPNUD and enter HLDG 282° right or according to ATC clearance.

3000 FT
MSA 25 NM RW11



CATEGORIA	DIRECTO RWY 11 <i>Straight in RWY 11</i>		CIRCULANDO <i>Circling</i>	ALTN <i>Alternate Minimums</i>
	LNAV/VNAV DA 820' (656')	LNAV MDA 1030' (866')		
A	1.6 Km	1.6 Km	N A	VER PAG. GEN 2.19
B				
C	3.2 Km	4.0 Km		
D				

PROC BARO-VNAV NA BLW 0°C ó ABV 54°C					
Veloc. Terrestre Kts	80	100	120	140	160
Angulo DES 2.52° FPM	357'	446'	535'	624'	713'
MAPI en RW11					

CAMBIO: Nuevo Proc
Change: New Proc

DGAC SUP 23/2022

03 NOVIEMBRE 2022

DASA / SECCION AIS-MAP

Tablas de coordenadas / Procedimientos RNAV de SCIP

PROCEDIMIENTOS DE APROXIMACION, SALIDA Y LLEGADA RNAV Approach, Departure and Arrival RNAV procedures (Esta información complementa a las cartillas publicadas en la AIP Chile VOL II / This information complements the charts published in the AIP Chile VOL II)													
IAC 19 RNP Y RWY 11 / SUP 23/2022 - 03 NOV 2022													
NR SERIE	TRANS ID	PATH TERM	PUNTO DE RECORRIDO (WPT)	LAT SEC (SUR)	LONG SEC (WESTE)	FB / FO	COURSE TRACK	DIST. (NM)	TURN DIRECT	ALTITUD	RESTRIC. VELOCIDAD KTS	VPA/ TCH	PERF DE NAV
10		IF	ITAPU (IAF/IF)	27°04'55,28"	109°36'10,86"	FB	-	-	-	2500 FT +	210	-	1,0
20		TF	ORITU (FAF)	27°07'39,54"	109°30'11,62"	FB	102 (117,09)	6,00	-	1400 FT +	-	-	1,0
30		TF	RW11 (MAPt)	27°09'40,68"	109° 25' 46,03"	FO	102 (117,04)	4,43	-	214FT+	-	2,52°/50	0,3
50		CF	OPNUD (MAHF)	27°14'52,65"	109°14'20,34"	FO	102 (117,04)	11,43	-	2500 FT +	-	-	1,0
60		HM	OPNUD (MAHF)	27°14'52,65"	109°14'20,34"	FB	282°(296,92)	4,00	-	2500 FT +	-	-	1,0
10	PUBGO	IF	PUBGO (IAF)	27°22'01,78"	109°18'24,43"	FB	-	-	-	4000 FT +	-	-	1,0
20	PUBGO	IF	MADKU (IAF)	27°12'03,77"	109°40'16,01"	FB	282°(296,95)	21,87	RT	3000 FT +	-	-	1,0
30	PUBGO	TF	ITAPU (IAF/IF)	27°04'55,28"	109°36'10,86"	FB	012 (027,12)	8,00	-	2500 FT +	210	-	1,0
10	ESABA	IF	ESABA (IAF)	27°07'43,39"	109°10'16,77"	FB	-	-	-	4000 FT +	-	-	1,0
20	ESABA	IF	KONGA (IAF)	26°57'46,66"	109°32'06,22"	FB	282°(296,89)	21,86	LT	3000 FT +	-	-	1,0
30	ESABA	TF	ITAPU (IAF/IF)	27°04'55,28"	109°36'10,86"	FB	192 (207,06)	8,00	-	2500 FT +	210	-	1,0