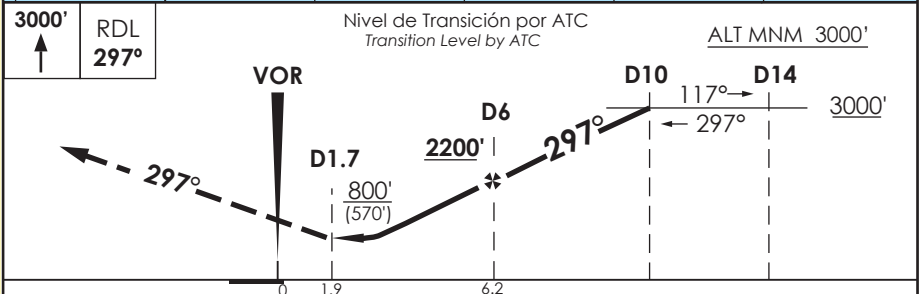
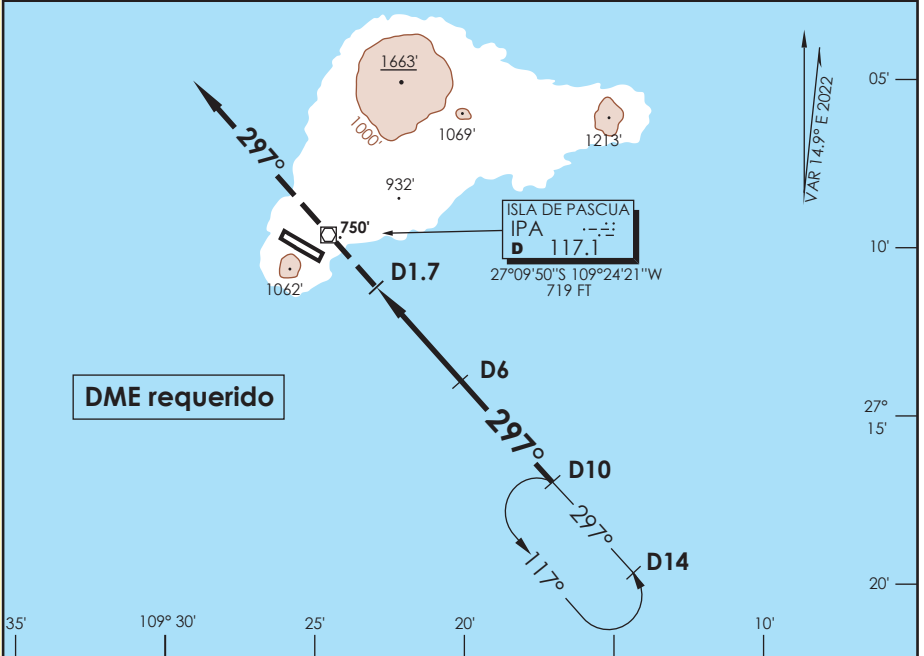


AP. MATAVERI ISLA DE PASCUA - CHILE

SCIP IAC 17
VOR Y Rwy 29

APP PASCUA Pascua Approach		127.3/118.1	TORRE PASCUA Pascua Tower		118.1	CONTROL TERRESTRE Ground Control		121.9
VOR IPA 117.1	FINAL APCH CRS 297°	MNM ALT D 6.0 2200'	MDA(H) 800' (570')	AD Elev. 227'	THR 29 Elev. 230'	<div style="border: 1px solid black; border-radius: 50%; width: 100px; height: 100px; display: flex; align-items: center; justify-content: center;"> 3000 FT </div> <p>MSA 25 NM ICA</p>		
<p>APCH FRUSTRADA: Ascenso a 3000' via R297, luego según autorización ATC.</p> <p>Missed Apch: Climb to 3000' on R297, then according to ATC clearance.</p>								



Categoría	DIRECTO RWY 29 <i>Straight in RWY 29 *</i>		CIRCULANDO Circling	ALTN Alternate Minimums	
	MDA 800' (570')				
	A	2.4 Km		NA	VER PAG. GEN 2.19
	B				
C	3.5 Km				
D					

CTN: VOR/DME INSTALADO SOBRE TERRENO ALTO, ELEV TOTAL 750 FT					* PROC DESALINEADO 15° RESPECTO A RCL				
CTN: VOR/DME installed over high terrain, total elevation 750 FT					* PROC offset 15° from RCL				
Veloc. Terrestre Kts	80	100	120	140	160				
Angulo DES 2.92° FPM	413'	517'	620'	723'	827'				
Dist. FAF α MAPT 4.3 NM	3:14	2:35	2:09	1:51	1:37				

DASA / SECCION AIS-MAP