
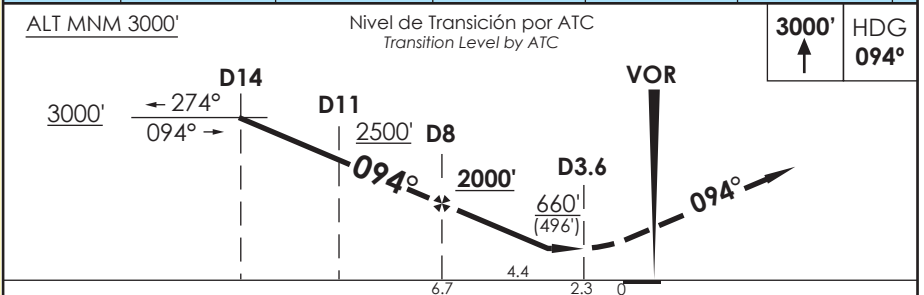
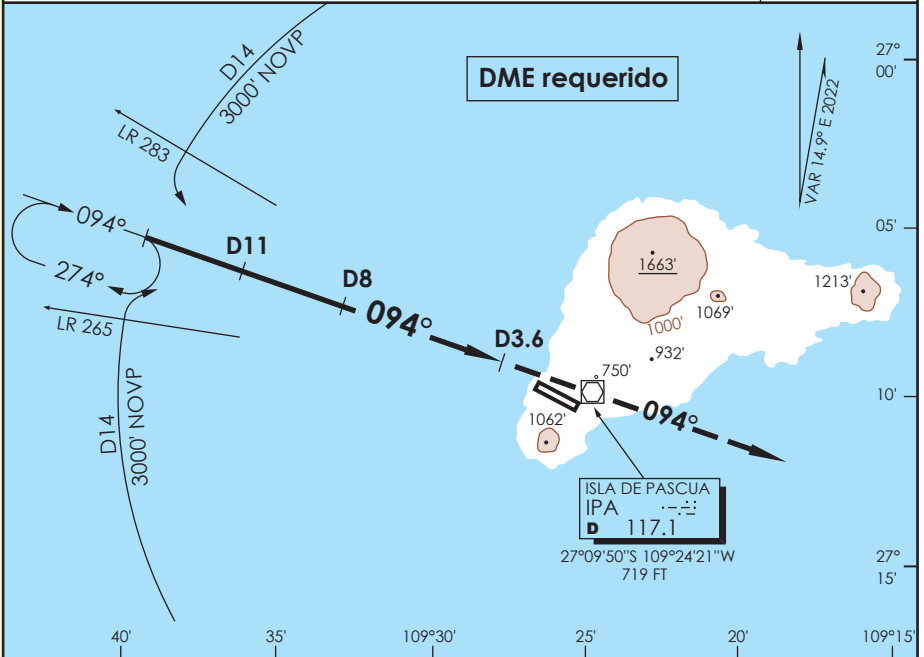


AP. MATAVERI
ISLA DE PASCUA - CHILE

SCIP IAC 16
VOR Rwy 11

APP PASCUA Pascua Approach		127.3/118.1	TORRE PASCUA Pascua Tower		118.1	CONTROL TERRESTRE Ground Control		121.9
VOR IPA 117.1	FINAL APCH CRS 094°	MNM ALT D 8.0 2000'	MDA(H) 660' (496')	AD Elev. 227'	THR 11 Elev. 164'	 MSA 25 NM IPA		
APCH FRUSTRADA: Ascenso a 3000' HDG 094°, luego según autorización ATC. Missed Apch: Climb to 3000' on HDG 094°, then according to ATC clearance.								



C A B C D	DIRECTO RWY 11 Straight in RWY 11 *		CIRCULANDO Circling	ALTN Alternate Minimums
	MDA 660' (496')			
A	2.4 Km		NA	VER PAG. GEN 2.19
B	3.2 Km			
C				

* PROC DESALINEADO 8° RESPECTO A RCL
 * PROC offset 8° from RCL

Veloc. Terrestre Kts	80	100	120	140	160
Angulo DES 2.51° FPM	355'	444'	533'	622'	710'
Dist. FAF a MAPT 4.4 NM	3:18	2:38	2:12	1:53	1:39

DASA / SECCION AIS-MAP