

AP. MATAVERI  
**ISLA DE PASCUA - CHILE**

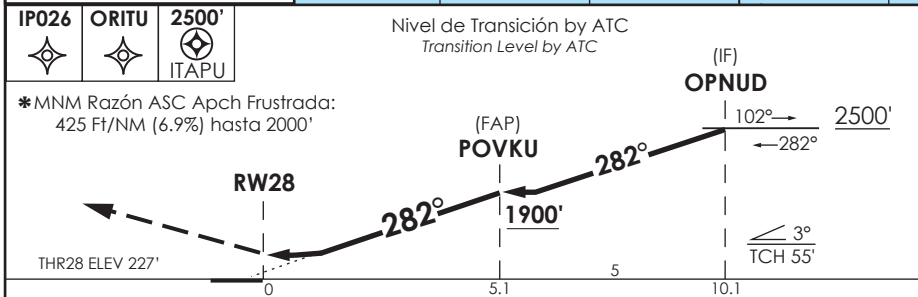
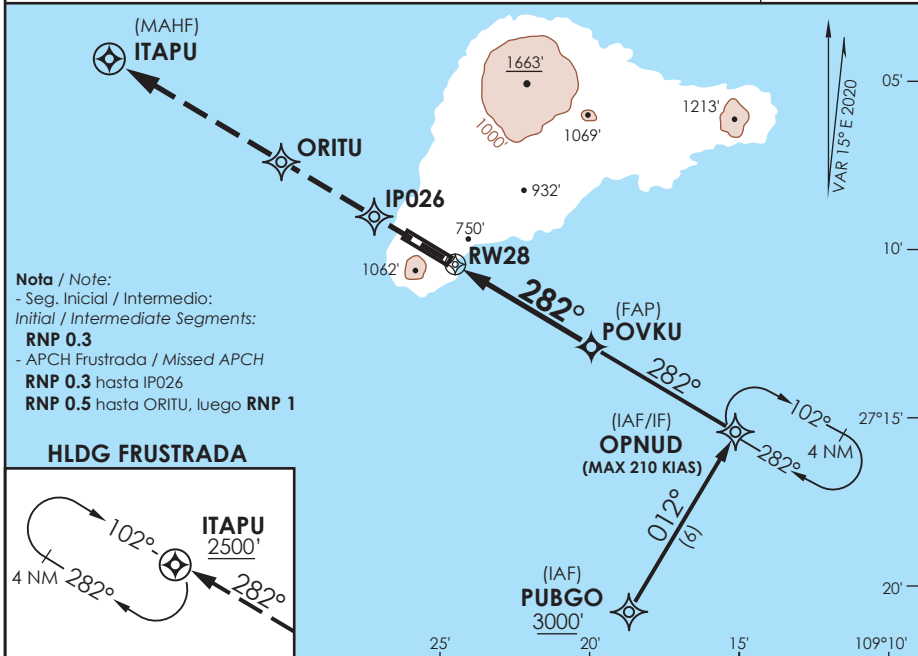
SCIP IAC 15  
**RNAV (RNP) Z Rwy 28**

APP PASCUA Pascua Approach	127.3/118.1	TORRE PASCUA Pascua Tower	118.1	CONTROL TERRESTRE Ground Control	121.9
-------------------------------	-------------	------------------------------	-------	-------------------------------------	-------

<b>RNAV</b>	FINAL APCH CRS <b>282°</b>	MNM ALT POVKU <b>1900'</b>	DA (H) <b>640'(413')</b>	AD Elev. THR 28 Elev. <b>227'</b>	 MSA 25 NM RW28
-------------	-------------------------------	-------------------------------	-----------------------------	--------------------------------------	---

APCH FRUSTRADA: ASC a 2500' vía IP026-ORITU-ITAPU, ingrese a HLDG 102° derecha o según autorización ATC.

Missed Apch: Climb to 2500' via IP026-ORITU-ITAPU, enter HLDG 102° right or according to ATC clearance.



ACFT CATEGORÍA	DIRECTO RWY 28 <i>Straight in RWY 28</i>	<b>RNP AR RWY 28 SCIP:</b> Para sistemas Baro VNAV no compensados proc NA bajo 0°C o sobre 42°C. Autorización requerida de acuerdo a DAN 06-22. <i>For uncompensated Baro VNAV systems procedure NA below 0°C or above 42°C. Authorization required according to DAN 06-22.</i>
	* RNP 0.3 DA 640' (413')	
	2.0 Km	

Veloc. Terrestre Kts	80	100	120	140	160	<b>REQUIERE AUTORIZACIÓN ESPECIAL PARA ACFT Y TRIPULACIÓN</b> SPECIAL ACFT AND AIRCREW AUTHORIZATION REQUIRED
Angulo DES 3.0° FPM	425'	531'	637'	743'	849'	
MÁP en RW28						

DASA / SECCION AIS-MAP