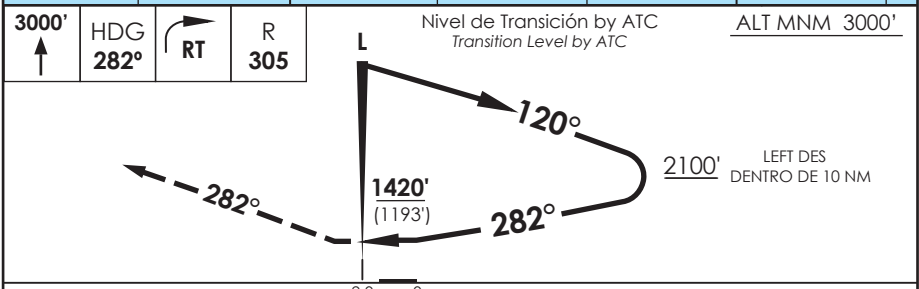
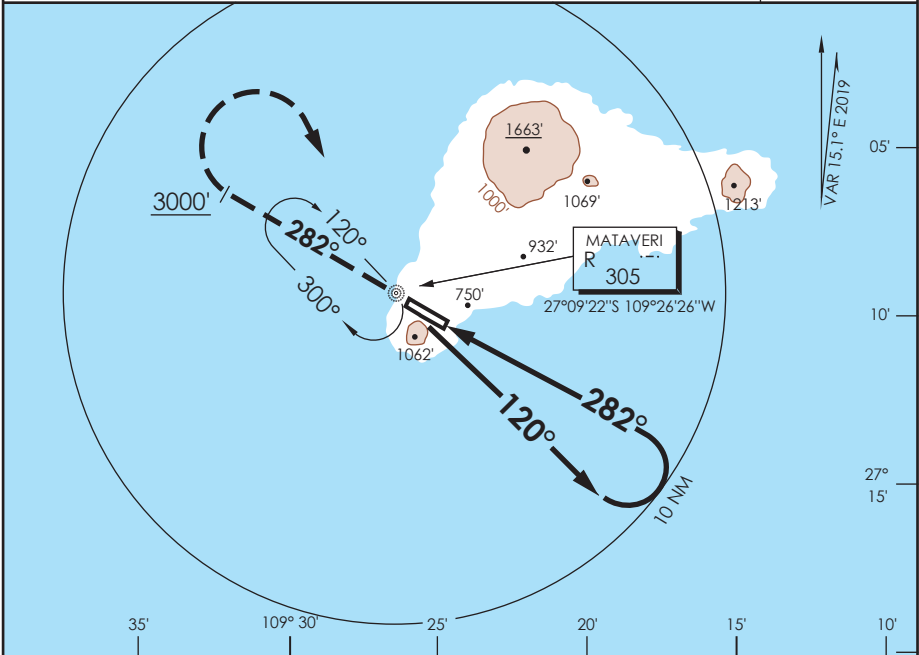


# AP. MATAVERI ISLA DE PASCUA - CHILE

SCIP IAC 10  
NDB Y Rwy 28

APP PASCUA Pascua Approach		127.3/118.1	TORRE PASCUA Pascua Tower		118.1	CONTROL TERRESTRE Ground Control		121.9
L "R" <b>305</b>	FINAL APCH CRS <b>282°</b>	<b>WO FAF</b>		MDA(H) <b>1420' (1193')</b>	AD Elev. THR 28 Elev. <b>227'</b>		3000 FT	MSA 25 NM IPA
APCH FRUSTRADA: Ascenso a 3000' HDG 282° L "R", viraje derecha directo a L "R", ingrese en HLDG 120° derecha según autorización ATC. Missed Apch: Climb to 3000' on HDG 282° "R" L, turn right direct to "R" L, enter HLDG 120° right according to ATC clearance.								



C A B C D	DIRECTO RWY 28 <i>Straight in RWY 28</i>		CIRCULANDO Circling	ALTN Alternate Minimums
	MDA <b>1420' (1193')</b>			
	A	2.0 Km	NA	VER PAG. GEN 2.19
	B	2.4 Km		
C	4.8 Km			
D				

\* MAPT pasado RWY 28.  
\* MAPT beyond RWY 28.