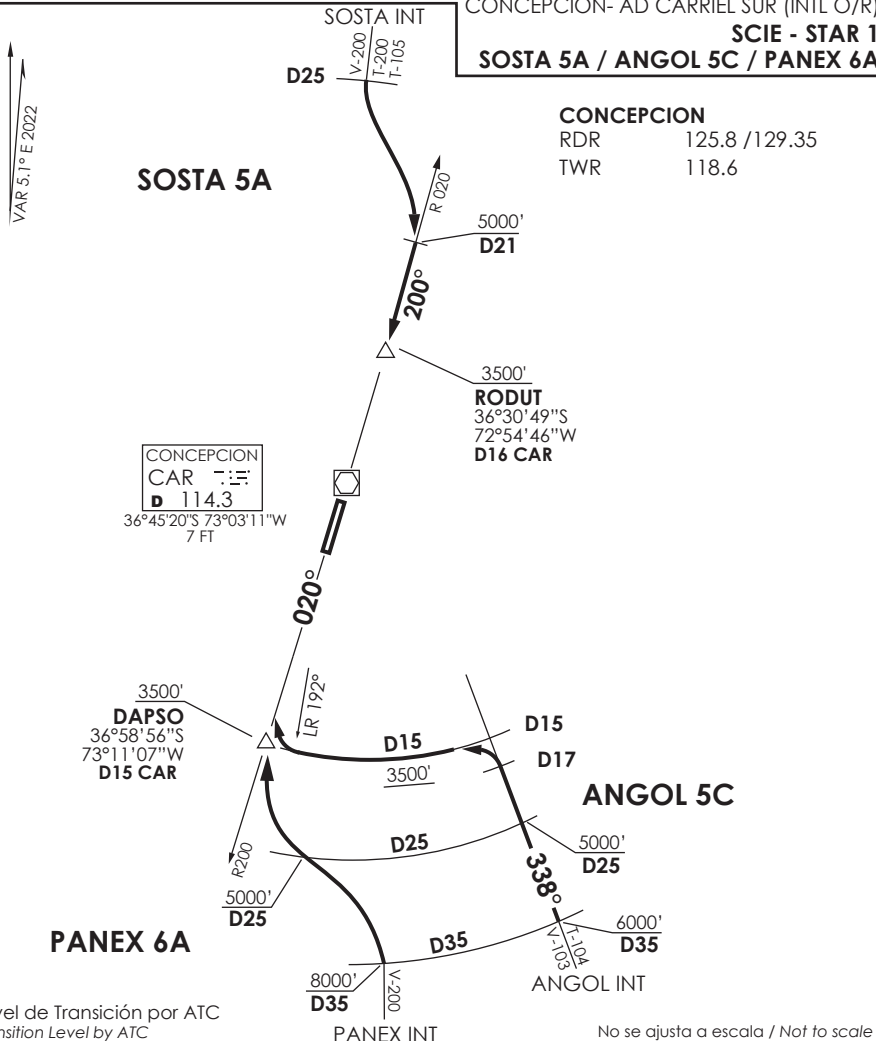


CONCEPCION- AD CARRIEL SUR (INTL O/R)  
**SCIE - STAR 1**  
**SOSTA 5A / ANGOL 5C / PANEX 6A**

**CONCEPCION**

RDR 125.8 / 129.35  
TWR 118.6



**STAR SOSTA 5A / ANGOL 5C / PANEX 6A**

**SOSTA 5A:** En D25 CAR VOR abandonar AWY para interceptar R020 (TR200°) CAR. Cruzar D21 N 5000 Ft o superior, RODUT 3500ft o superior, luego según autorización ATC.

**SOSTA 5A:** At D25 CAR VOR leave AWY to intercept R020 (TR200°) CAR. Cross D21 N at or above 5000 Ft, RODUT at or above 3500FT, then according to ATC clearance.

**ANGOL 5C:** Continuar en R158 (TR338°) CAR VOR hasta D17, viraje izquierda para orbitar D15 hasta DAPSO. Cruzar D35 6000FT o superior, D25 5000FT o superior, DAPSO 3500 FT o superior, luego según autorización ATC.

**ANGOL 5C:** Continue on R158 (TR338°) CAR VOR until D17, turn left to join D15 until DAPSO. Cross D35 CAR at or above 6000FT, D25 CAR at or above 5000FT, DAPSO at or above 3500FT, then according to ATC clearance.

**PANEX 6A:** En D35 CAR abandonar AWY para interceptar R200 (TR020°) CAR. Cruzar D25 5000FT o superior, DAPSO 3500FT o superior, luego según autorización ATC.

**PANEX 6A:** At D35 CAR VOR leave AWY to intercept R200 (TR020°) CAR. Cross D25 at or above 5000FT, DAPSO at or above 3500FT, then according to ATC clearance.