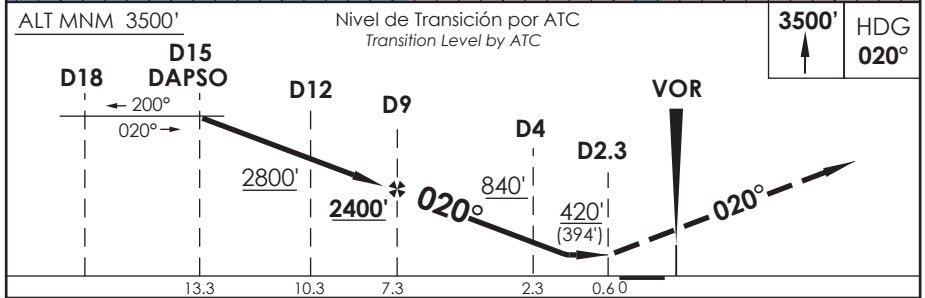
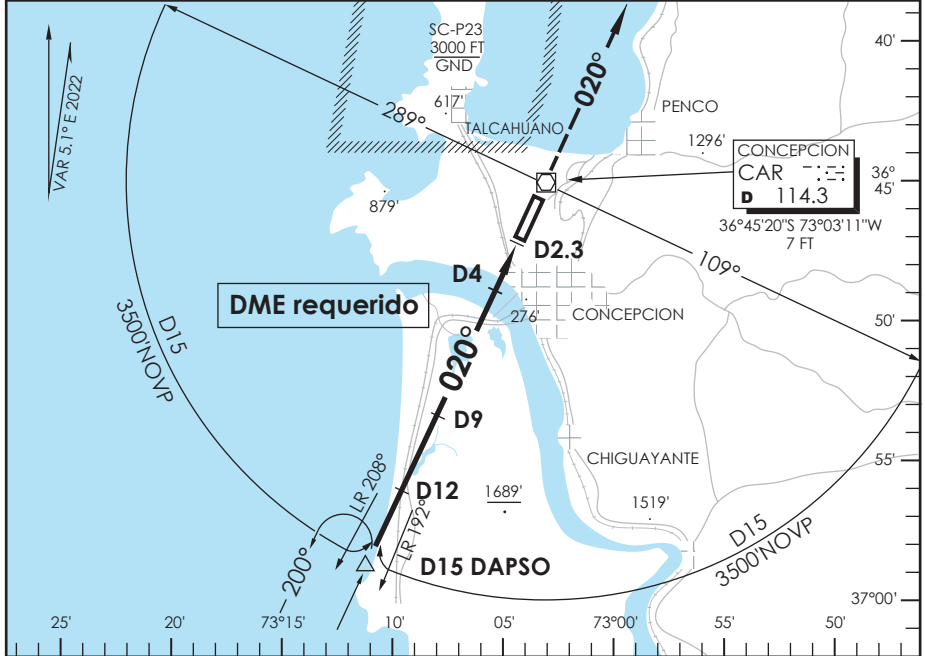


# AD CARRIEL SUR (INTL O/R) CONCEPCION - CHILE

SCIE IAC 7  
VOR RWY 02

CONCEPCION RADAR Concepción RADAR		125.8/129.35	TORRE CONCEPCION Concepción Tower		118.6	CONTROL TERRESTRE Ground Control		121.9
VOR CAR <b>114.3</b>	FINAL APCH CRS <b>020°</b>	MNM ALT D9 <b>2400'</b>	MDA (H) <b>420' (394')</b>		AD Elev. THR 02 Elev.	<b>26'</b> <b>26'</b>		 4300 FT MSA 25 NM CAR
APCH FRUSTRADA: Ascenso 3500' HDG 020° dentro de D15 según autorización ATC. Missed Apch: Climb to 3500' on HDG 020° within D15 according to ATC clearance.								



CATEGORÍA	DIRECTO RWY 02 Straight in RWY 02				CIRCULANDO OESTE Circling West		ALTN Alternate Minimums
	MDA <b>420' (394')</b>						
	ALSF-2		WO ALSF-2				
A	1.2 Km		1.6 Km		560' (534)	1.6 Km	VER PAG. GEN 2.19
B					640' (614')	2.8 Km	
C						3.2 Km	
D						2.0 Km	
Veloc. Terrestre Kts		80	100	120	140	160	
Angulo DES 3.26° FPM		461'	577'	692'	808'	923'	
FAF to MAP 6.7 NM		5:02	4:01	3:21	2:52	2:31	

CAMBIO: NR IAC  
CHANGE: IAC NR

AMDT 96

16 MAYO 2024

DASA / SECCION AIS-MAP