
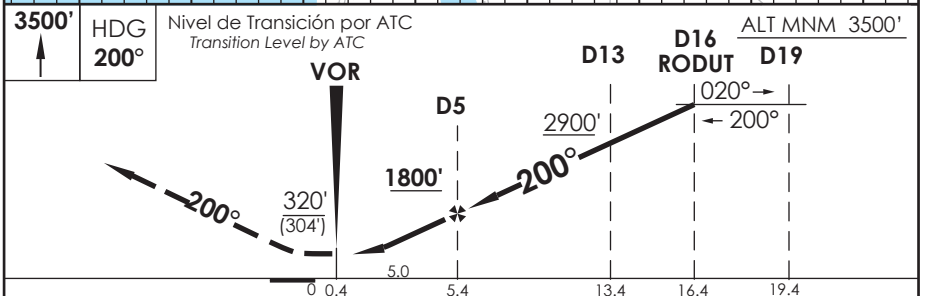


AD. CARRIEL SUR (INTL O/R) CONCEPCION - CHILE

SCIE IAC 6
VOR Z RWY 20

CONCEPCION RADAR Concepción RADAR		125.8/129.35	TORRE CONCEPCION Concepción Tower		118.6	CONTROL TERRESTRE Ground Control		121.9
VOR CAR 114.3	FINAL APCH CRS 200°	MNM ALT D5 1800'	MDA (H) 320' (304')		AD Elev. THR 20 Elev.	26' 16'		 4300 FT MSA 25 NM CAR
APCH FRUSTRADA: Ascenso 3500' HDG 200° dentro de D15 según autorización ATC. Missed Apch: Climb to 3500' on HDG 200° within D15 according to ATC clearance.								



CATEGORIA	DIRECTO RWY 20 <i>Straight in RWY 20</i>		CIRCULANDO OESTE <i>Circling West</i>	ALTN <i>Alternate Minimums</i>
	MDA 320' (304')			
	A	1.6 Km	560' (534')	VER PAG. GEN 2.19
	B		640' (614')	
C				
D				

Veloc. Terrestre Kts	80	100	120	140	160
Angulo DES 3.26° FPM	461'	577'	692'	808'	923'
FAF to MAP 5.0 NM	3:45	3:00	2:30	2:08	1:52

DASA / SECCION IAS-MAP