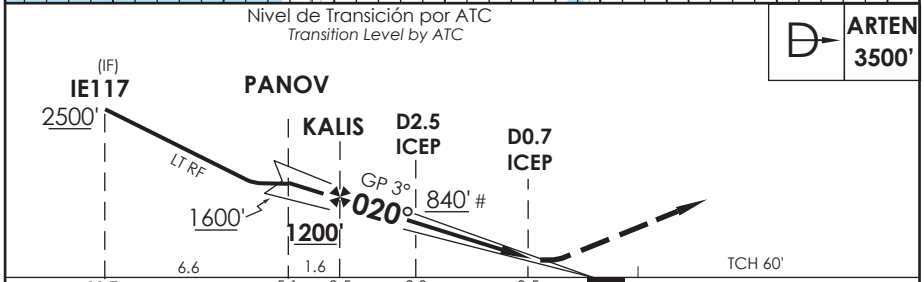
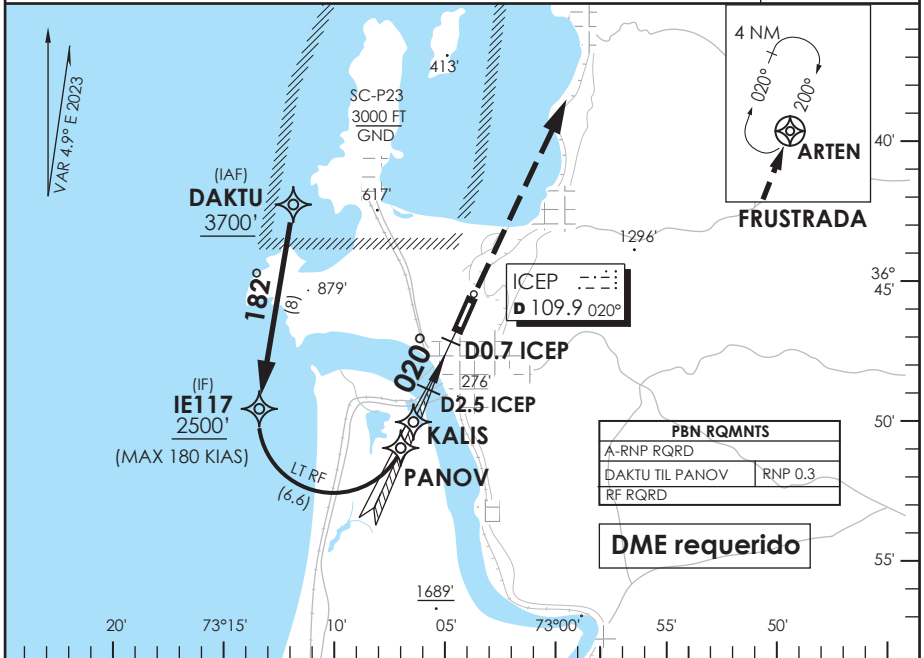


AD. CARRIEL SUR (INTL O/R)
CONCEPCION - CHILE

SCIE IAC 5
ILS T o LOC T RWY 02

CONCEPCION RADAR Concepción RADAR		125.8/129.35		TORRE CONCEPCION Concepción Tower		118.6		CONTROL TERRESTRE Ground Control		121.9	
LOC ICEP 109.9	FINAL APCH CRS 020°	MNM ALT KALIS 1200'	ILS DA (H) 226' (200')	AD Elev. 26' THR 02 Elev. 26'		<div style="border: 1px solid black; border-radius: 50%; width: 100px; height: 100px; display: flex; align-items: center; justify-content: center; margin: 0 auto;"> 4300 FT </div> <p>MSA 25 NM CAR</p>					
<p>APCH FRUSTRADA: Ascenso directo ARTEN 3500', ingrese HLDG 200° derecha o según autorización ATC. <i>Missed Apch: Climb direct to ARTEN 3500' enter on HLDG 200° right or according to ATC Clearance.</i></p>											



DIRECTO RWY 02 <i>Straight in RWY 02</i> **						CIRCULANDO OESTE Circling West		ALTN Alternate Minimums	
ILS DA 226' (200')						LOC WO GP MDA 360' (334')			
ALSF-2		WO ALSF-2		ALSF-2		WO ALSF-2			
TDZL y RCLL		WO TDZL o RCLL						VER PAG. GEN 2.19	
A	RVR 550m	RVR 550m*				560' (534')	1.6 Km		
B	0.8 Km	RVR 750m	1.2 Km	0.8 Km	1.6 Km	640' (614')	2.8 Km		
C		0.8 Km					3.2 Km		
D									
* Ver pagina GEN 2.11 / See page GEN 2.11						** WO ICEP DME PROC NA PROCEDURE NOT AUTHORIZED WITHOUT ICEP DME			
Veloc. Terrestre Kts		80	100	120	140	160	# Solo LOC		
GP 3° FPM		425'	531'	637'	743'	849'	# LOC only		

DASA / SECCION IAS-MAP