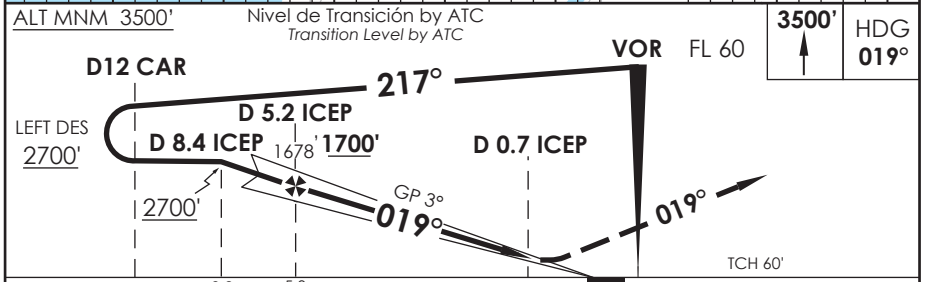


# AD. CARRIEL SUR (INTL O/R) CONCEPCION - CHILE

SCIE IAC 4  
ILS W RWY 02

CONCEPCION RADAR Concepción RADAR		129.35/124.2		TORRE CONCEPCION Concepción Tower		118.6		CONTROL TERRESTRE Ground Control		121.9	
LOC ICEP	FINAL APCH CRS	MNM ALT D5.2 ICEP	ILS DA (H)	AD Elev.	THR 02 Elev.	<div style="border: 1px solid black; border-radius: 50%; width: 60px; height: 60px; display: flex; align-items: center; justify-content: center; margin: 0 auto;">4300 FT</div> <p>MSA 25 NM CAR</p>					
109.9	019°	1700'	226' (200')	26'	26'						
APCH FRUSTRADA: Ascenso 3500' HDG 019°, luego según autorización ATC.											
Missed APCH: Climb to 3500' on HDG 019°, then according to ATC clearance.											



DIRECTO RWY 02 Straight in RWY 02						CIRCULANDO OESTE Circling West		ALTN Alternate Minimums	
** ILS DA 226' (200')						** LOC WO GP MDA 360' (334')			
ALSF-2		WO ALSF-2		ALSF-2		WO ALSF-2			
TDZL y RCLL		WO TDZL o RCLL							
A	RVR 550m	RVR 550m*				560' (534')	1.6 Km	VER PAG. GEN 2.19	
B	0.8 Km	RVR 750m	1.2 Km	0.8 Km	1.6 Km	640' (614')	2.8 Km		
C		0.8 Km					3.2 Km		
D									
* Ver pagina GEN 2.11 / See page GEN 2.11						** WO ICEP DME PROC NA PROCEDURE NOT AUTHORIZED WITHOUT ICEP DME			
Veloc. Terrestre Kts		80	100	120	140	160			
GP 3° FPM		425'	531'	637'	743'	849'			
(FAF TO MAPt 4.4)		3:18	2:38	2:12	1:53	1:39			

CAMBIO: VAR  
Change: VAR

DGAC AMDT 85

13 AGOSTO 2020

DASA / SECCION IAS-MAP