
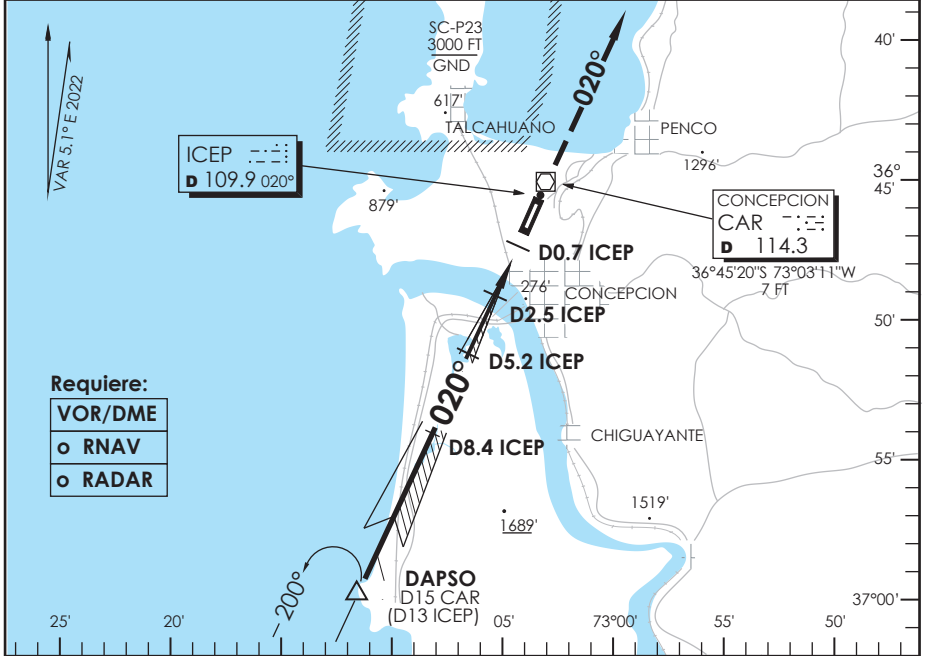


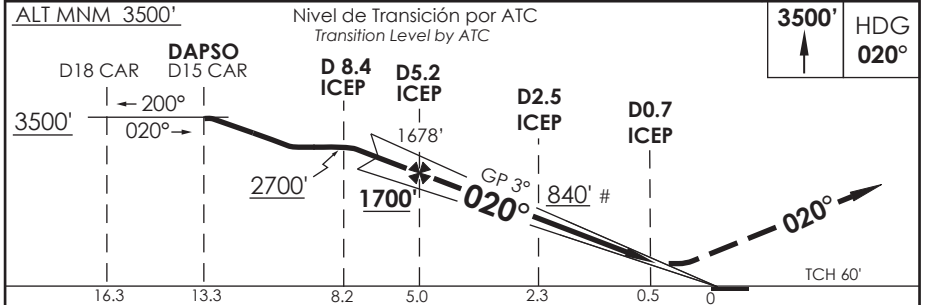
AD. CARRIEL SUR (INTL O/R) CONCEPCION - CHILE

SCIE IAC 3 ILS X o LOC X RWY 02

CONCEPCION RADAR Concepción RADAR		125.8/129.35	TORRE CONCEPCION Concepción Tower		118.6	CONTROL TERRESTRE Ground Control		121.9	
LOC ICEP	FINAL APCH CRS	MNM ALT D5.2 ICEP	ILS DA (H)	AD Elev.	26'				
109.9	020°	1700'	226' (200')	THR 02 Elev.	26'				
APCH FRUSTRADA: Ascenso 3500' HDG 020°, luego según autorización ATC.								MSA 25 NM CAR	
Missed APCH: Climb to 3500' on HDG 020°, then according to ATC clearance.									



- Require:**
- VOR/DME
 - o RNAV
 - o RADAR



C R O M O N A	DIRECTO RWY 02 Straight in RWY 02 **					CIRCULANDO OESTE Circling West	ALTN Alternate Minimums	
	ILS DA 226' (200')			LOC MDA 360' (334')				
	ALSF-2		WO ALSF-2	ALSF-2		WO ALSF-2	1.6 Km 2.8 Km 3.2 Km	VER PAG. GEN 2.19
	TDZL y RCLL	WO TDZL o RCLL						
A	RVR 550m	RVR 550m*	1.2 Km	0.8 Km	1.6 Km	560' (534')		
B	RVR 550m	RVR 750m	1.2 Km	0.8 Km	1.6 Km	640' (614')		
C	0.8 Km	0.8 Km	1.2 Km	0.8 Km	1.6 Km	640' (614')		
D		0.8 Km	1.2 Km	0.8 Km	1.6 Km	640' (614')		
* Ver página GEN 2.11 / See page GEN 2.11			** WO ICEP DME PROC NA PROCEDURE NOT AUTHORIZED WITHOUT ICEP DME					
Veloc. Terrestre Kts	80	100	120	140	160	# Solo LOC		
GP 3°	425'	531'	637'	743'	849'	# LOC only		
FAF to MAPt 4.4 NM	3:18	2:38	2:12	1:53	1:39			

DASA / SECCION A45-MAP