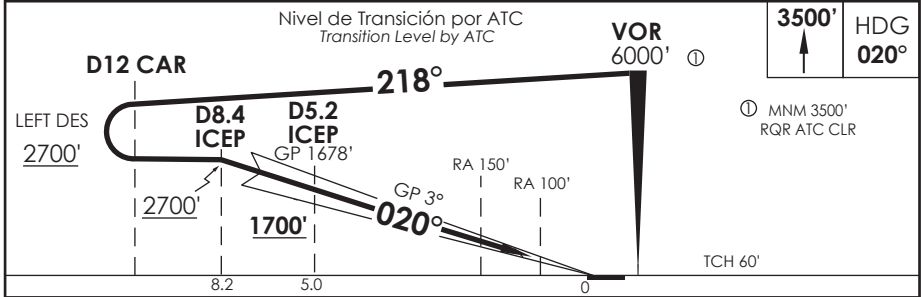
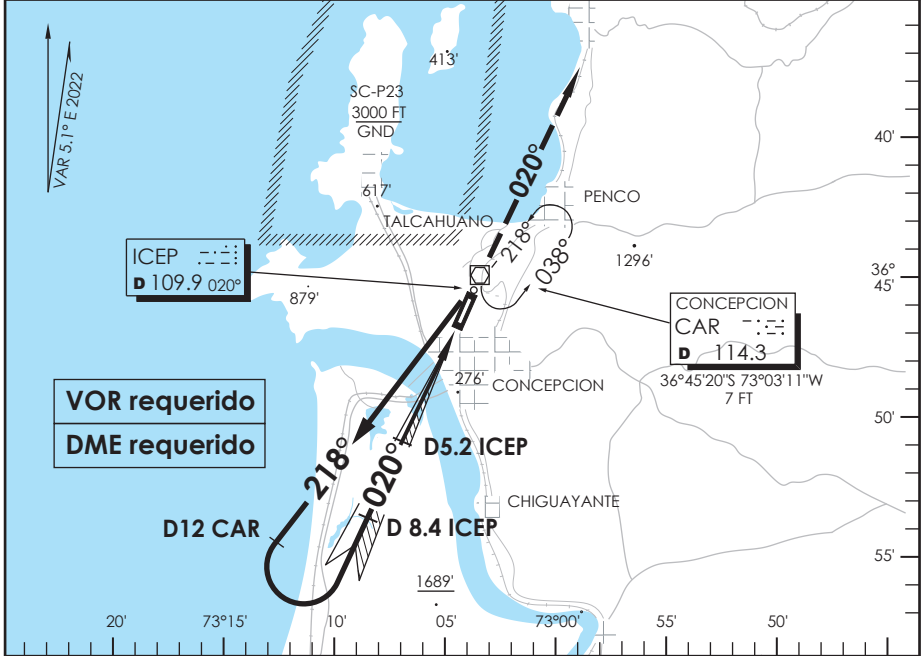


AD. CARRIEL SUR (INTL O/R)  
**CONCEPCION - CHILE**

SCIE IAC 2  
**ILS Y RWY 02**

CONCEPCION RADAR Concepción RADAR		125.8/129.35	TORRE CONCEPCION Concepción Tower		118.6	CONTROL TERRESTRE Ground Control		121.9
LOC ICEP <b>109.9</b>	FINAL APCH CRS <b>020°</b>	MNM ALT D5.2 ICEP <b>1700'</b>	CAT II & III A/B De acuerdo a CAT According to CAT		AD Elev. <b>26'</b>	THR 02 Elev. <b>26'</b>		
APCH FRUSTRADA: Ascenso 3500' HDG 020°, luego según autorización ATC. Missed APCH: Climb to 3500' on HDG 020°, then according to ATC clearance.								



CATEGORIA	** DIRECTO RWY 02 Straight in RWY 02				* Aeronaves operando "FAIL PASSIVE" DA(H) 76' (50 FT)  * Aircraft operating "FAIL PASSIVE" DA(H) 76' (50 FT)  <b>MNM ALTN VER PAG GEN 2.19</b> ALTN MNM See pag 2.19
	ILS CAT III-B *		ILS CAT III-A *		
	RA 100' DA 126'(100')		RA 150' DA 176'(150')		
	A	RVR 50m	RVR 200m	RVR 350m	
B					
C					
D					

Se requiere certificación de ACFT y Habilitación de Tripulación Especial: DAN 06-02, 06-12  
 Special Aircraft and aircrew certification required: DAN 06-02, 06-12

Veloc. Terrestre Kts	80	100	120	140	160	** WO ICEP DME PROC NA PROC NOT AUTHORIZED WITHOUT ICEP DME
GP 3° FPM	425'	531'	637'	743'	849'	

DASA / SECCION IAS-MAP