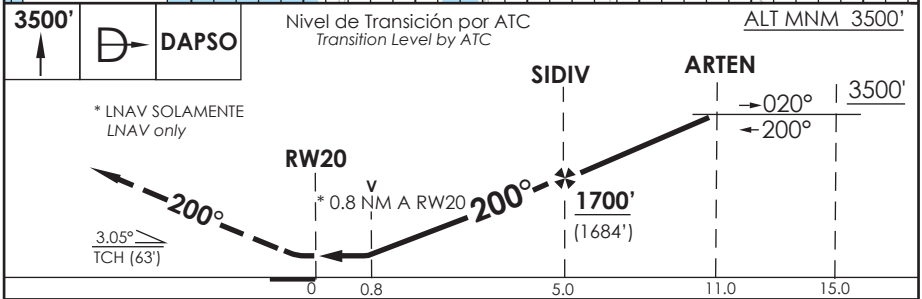


AD. CARRIEL SUR (INTL O/R)  
**CONCEPCION - CHILE**

SCIE IAC 10  
**RNP RWY 20**

CONCEPCION RADAR Concepción RADAR		125.8/129.35	TORRE CONCEPCION Concepción Tower		118.6	CONTROL TERRESTRE Ground Control		121.9
<b>RNP</b>	FINAL APCH CRS <b>200°</b>	MNM ALT SIDIV <b>1700'</b>	LNAV/VNAV DA(H) <b>270'(254')</b>	AD Elev. <b>26'</b>	THR 20 Elev. <b>16'</b>	 4300 FT MSA 25 NM RWY20		
APCH FRUSTRADA: Ascenso 3500' directo DAPSO, ingrese HLDG 020° izquierda o según autorización ATC. Missed Apch: Climb to 3500' direct to DAPSO, enter on HLDG 020° left or according to ATC clearance.								



C A T E G O R I A	DIRECTO RWY 20 / Straight in RWY 20		CIRCULANDO OESTE / Circling West	ALTN / Alternate Minimums	
	LNAV/VNAV DA <b>270'(254')</b>	LNAV MDA <b>320'(304')</b>			
	A	1.6 Km	1.6 Km	560'(534')	VER PAG. GEN 2.19
	B			640'	
C	(614')				
D			2.8 Km		
			3.2 Km		
PROC BARO-VNAV NA BLW -10°C ó ABV 47°C					
Veloc. Terrestre Kts	80	100	120	140	160
Angulo DES 3,05° FPM	432'	540'	648'	755'	863'
MAPt en RW20					

DASA / SECCION IAS-MAP