
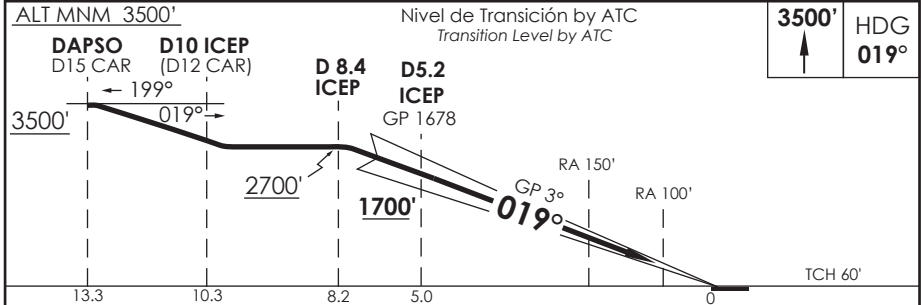
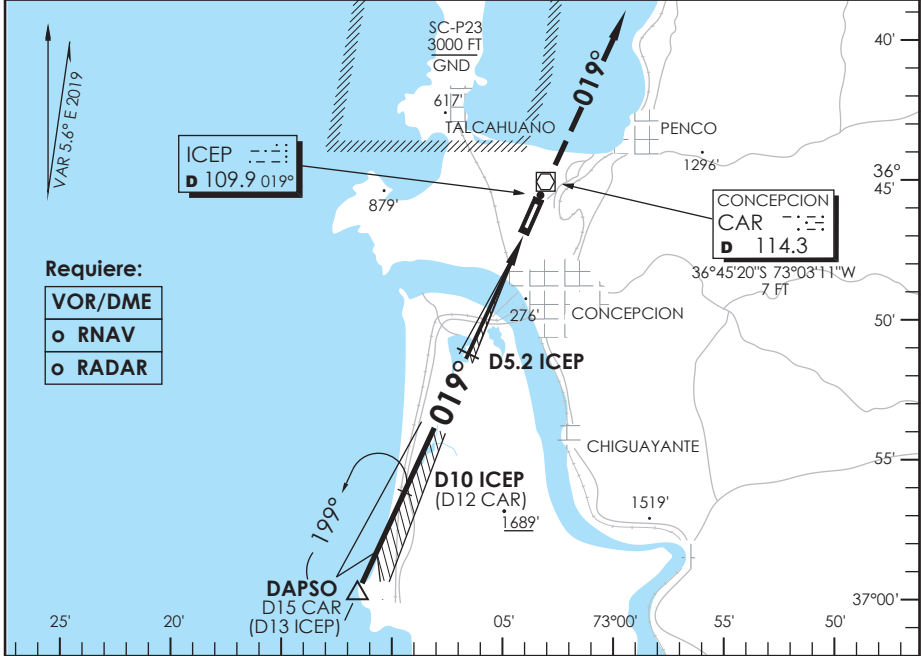


AD. CARRIEL SUR (INTL O/R) CONCEPCION - CHILE

SCIE IAC 1 ILS Z RWY 02

CONCEPCION RADAR Concepción RADAR		129.35/124.2	TORRE CONCEPCION Concepción Tower		118.6	CONTROL TERRESTRE Ground Control		121.9
LOC ICEP 109.9	FINAL APCH CRS 019°	MNM ALT D5.2 ICEP 1700'	CAT II & III A/B De acuerdo a CAT According to CAT		AD Elev. 26'	THR 02 Elev. 26'		 4300 FT MSA 25 NM CAR
APCH FRUSTRADA: Ascenso 3500' HDG 019°, luego según autorización ATC. Missed APCH: Climb to 3500' on HDG 019°, then according to ATC clearance.								



C A T I I I I I	** DIRECTO RWY 02 Straight in RWY 02				* Aeronaves operando "FAIL PASSIVE" DA(H) 76'(50 FT) * Aircraft operating "FAIL PASSIVE" DA(H) 76'(50 FT) MNM ALTN VER PAG GEN 2.19 ALTN MNM See pag 2.19
	ILS CAT III-B *	ILS CAT III-A *	ILS CAT II		
			RA 100' DA 126'(100')	RA 150' DA 176'(150')	
	A		RVR 350m	RVR 500m	
B	RVR 50m	RVR 200m			
C					
D					

Se requiere certificación de ACFT y Habilitación de Tripulación Especial: DAN 06-02, 06-12
 Special Aircraft and aircrew certification required: DAN 06-02, 06-12

Veloc. Terrestre Kts	80	100	120	140	160	** WO ICEP DME PROC NA PROC NOT AUTHORIZED WITHOUT ICEP DME
GP 3°	425'	531'	637'	743'	849'	

CAMBIO: VAR / FREQ
 Change: VAR / FREQ

DGAC AMDT 83

15 AGOSTO 2019