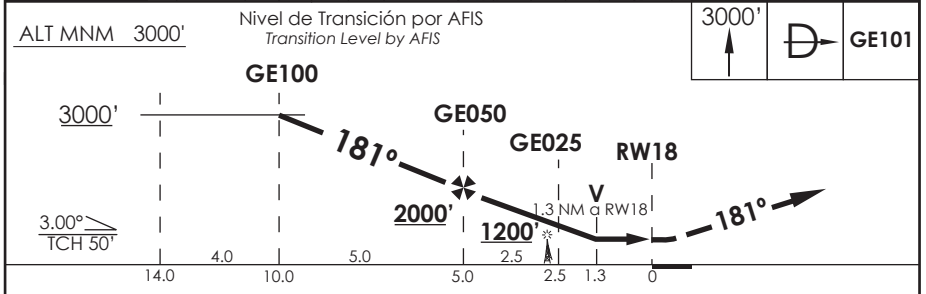
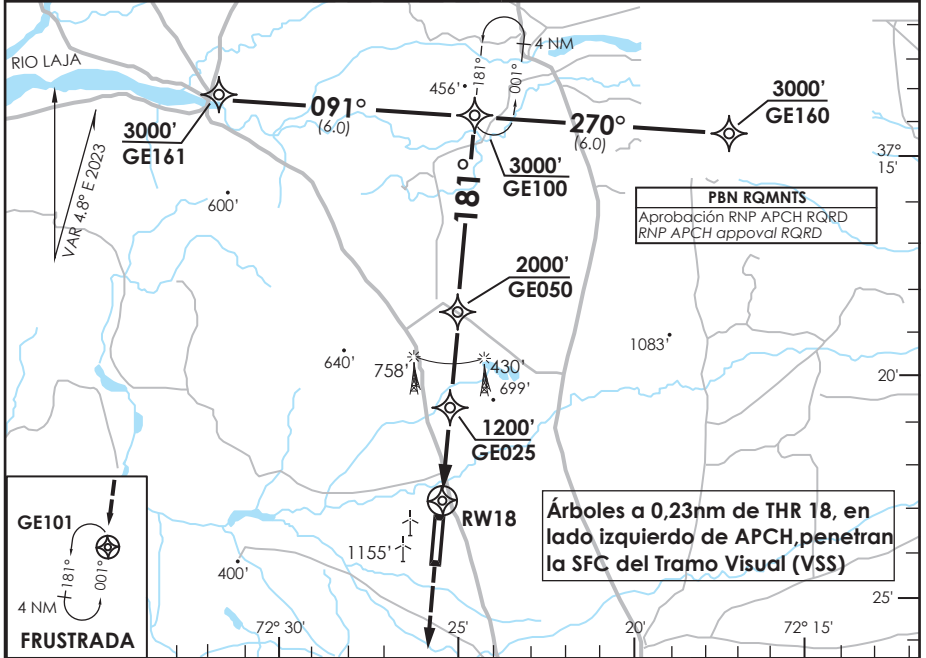


AD. MARIA DOLORES  
**LOS ANGELES - CHILE**

SCGE IAC 5  
**RNP Rwy 18 (LNAV only)**

ACC SANTIAGO Santiago Center	126.3	LOS ANGELES INFORMACION Los Angeles Information	126.7		
<b>RNP</b>	FINAL APCH CRS <b>181°</b>	MNM ALT GE050 <b>2000'</b> (1637')	LNAV MDA(H) <b>840'</b> (477')	AD Elev. THR 18 Elev.	<b>374'</b> <b>363'</b>
APCH FRUSTRADA: Ascenso 3000' directo GE101. Ingrese HLDG 001° izquierdo o según autorización ATC. Missed Apch: Climb to 3000' direct to GE101. Enter on HLDG 001° left o according to ATC clearance.					4500 FT MSA 25 NM MAD



CATEGORÍA	DIRECTO RWY 18 <i>Straight in RWY 18</i>	CIRCULANDO <i>Circling</i>	ALTN <i>Alternate Minimums</i>
	LNAV MDA <b>840'</b> (477')		
A	1.6 Km	NA	VER PAG. GEN 2.19
B			
C			

Veloc. Terrestre Kts	70	90	100	120	140	160
----------------------	----	----	-----	-----	-----	-----