

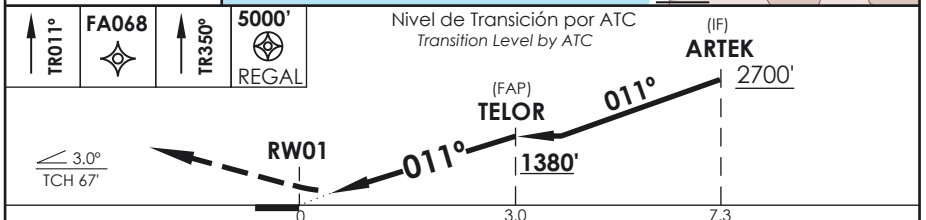
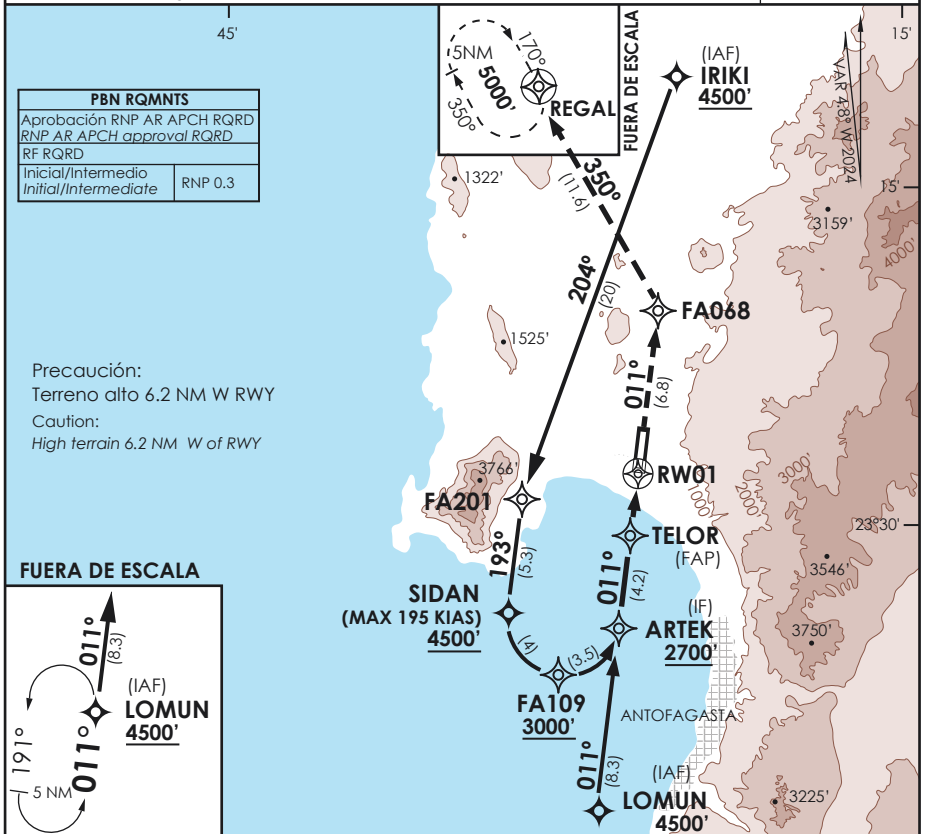
AP. ANDRÉS SABELLA ANTOFAGASTA - CHILE

SCFA IAC 9
RNP Z Rwy 01 (AR)

APP ANTOFAGASTA RADAR Antofagasta Approach	120.9 / 119.3	TORRE ANTOFAGASTA Antofagasta Tower	118.1	CONTROL TERRESTRE Ground Control	121.9
---	---------------	--	-------	-------------------------------------	-------

RNP	FINAL APCH CRS 011°	MNM ALT TELOR 1380'	DA/H ver mínimos DA/H refer to minimums	AD Elev. THR 01 Elev	455' 346'
------------	-------------------------------	-------------------------------	--	-------------------------	----------------------------

APCH FRUSTRADA: Ascenso en TR011° directo a FA068, viraje izquierda directo a REGAL, ingrese y ascienda en HLDG a 5000' o según autorización ATC.
 Missed Apch: Climb on TR011° direct to FA068, turn left direct to REGAL, enter and climb in hold to 5000' or according to ATC clearance.



DIRECTO RWY 01 <i>Straight in RWY 01</i>	RNP AR RWY 01 SCFA: Para sistemas Baro VNAV no compensados CAT A/B/C PROC NA BLW 7°C ó ABV 54°C CAT D PROC NA BLW 7°C ó ABV 45°C	
	RNP 0.1 DA 740' (394')	RNP 0.30 DA 880' (534')
MNM ALTN RNP 0.30: VER PAG GEN 2.19 See pag 2.19		

Veloc. Terrestre Kts	80	100	120	140	160	RQR AUTORIZACIÓN ESPECIAL PARA ACFT Y CREW SPECIAL ACFT AND AIRCREW AUTHORIZATION RQRD
MAPt en DA	425'	531'	637'	743'	849'	

DASA / SECCION AIS-MAP