


ANTOFAGASTA - CHILE

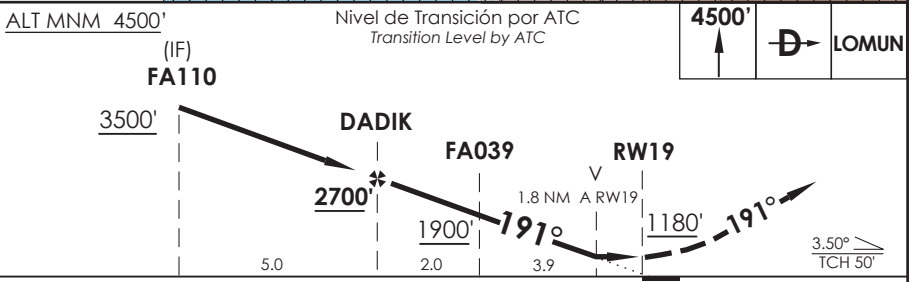
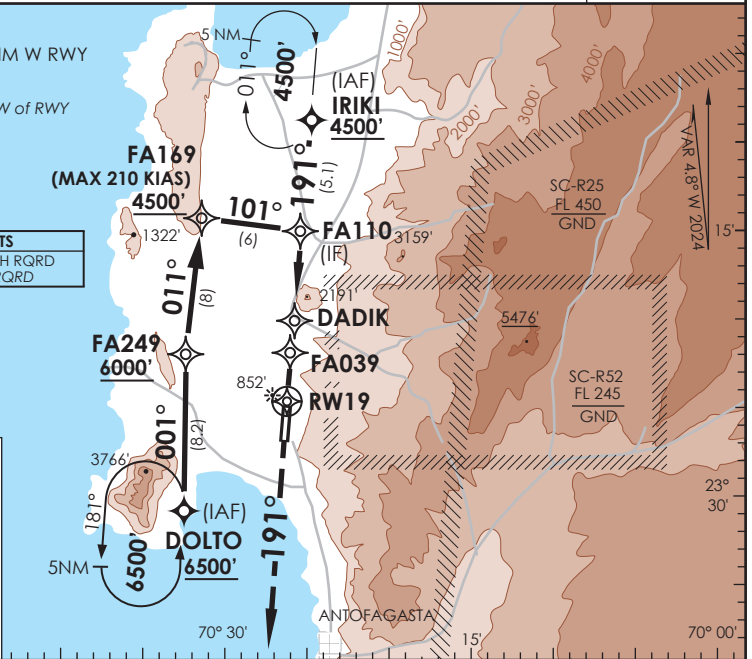
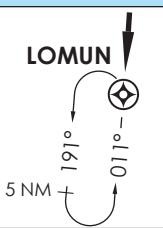
RNP Y Rwy 19 (LNAV only)

APP ANTOFAGASTA RADAR Antofagasta Approach	120.9 / 119.3	TORRE ANTOFAGASTA Antofagasta Tower	118.1	CONTROL TERRESTRE Ground Control	121.9
RNP	FINAL APCH CRS 191°	MNM ALT DADIK 2700'	LNAV MDA(H) 1180' (725')	AD Elev. 455' THR 19 Elev 455'	 MSA 25 NM RW19
APCH FRUSTRADA: Ascenso 4500' directo LOMUN, ingrese HLDG 011° izquierdo o según autorización ATC. Missed Apch: Climb to 4500' direct LOMUN, enter on HLDG 011° left or according to ATC clearance.					

Precaución:
Terreno alto 6.2 NM W Rwy
Caution:
High terrain 6.2 NM W of RWY

PBN RQMNTS
Aprobación RNP APCH RQRD
RNP APCH approval RQRD

FRUSTRADA



A-RQOM-TAC	DIRECTO RWY 19 <i>Straight in RWY 19</i>	CIRCULANDO OESTE Circling West	ALTN Alternate Minimums
	LNAV MDA 1180' (725')		
A	1.6 Km	1240' (785')	1.6 Km
B		1300' (845')	2.0 Km
C		1460' (1005')	4.0 Km
D			4.8 Km

DASA / SECCION AIS-WAY

Veloc. Terrestre Kts	80	100	120	140	160
Angulo DES 3,5°	496'	619'	743'	867'	991'
MAPt en RW19					