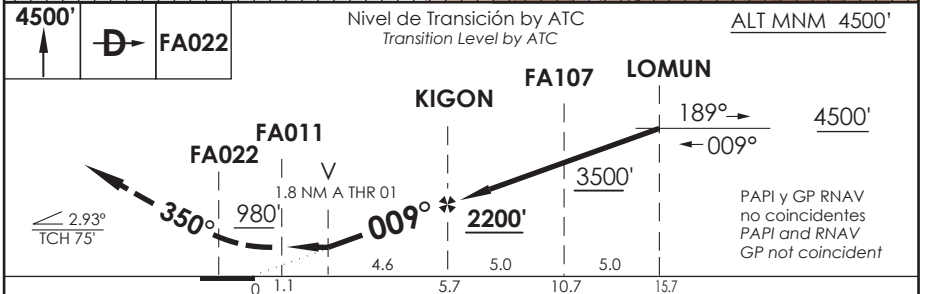
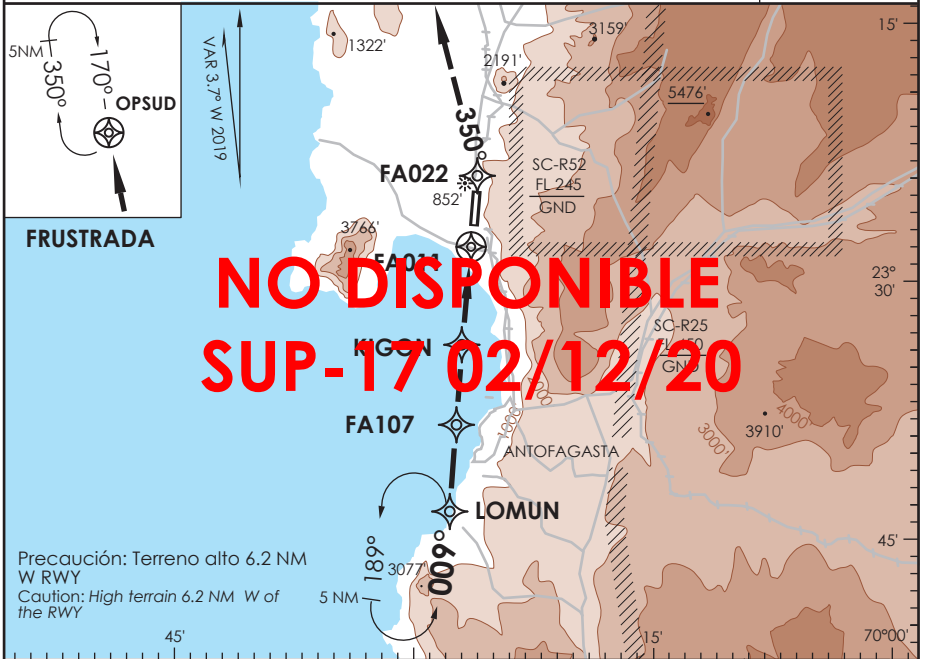


ANTOFAGASTA - CHILE

RNAV (GNSS) Y Rwy 01

APP ANTOFAGASTA RADAR Antofagasta Approach 120.9 / 119.3		TORRE ANTOFAGASTA Antofagasta Tower 118.1		CONTROL TERRESTRE Ground Control 121.9	
RNAV	FINAL APCH CRS 009°	MNM ALT KIGON 2200'	LNAV MDA(H) 980' (628')	AD Elev. THR 01 Elev 455'	7200 FT MSA 25 NM SERVO
APCH FRUSTRADA: Ascenso 4500' directo FA022 - OPSUD, ingrese HLDG 170° derecho o según autorización ATC. <i>Missed Apch: Climb to 4500' direct FA022 direct OPSUD, enter on HLDG 170° right or according to ATC clearance.</i>					



A-P R-O A-D	DIRECTO Rwy 01 <i>Straight in Rwy 01</i>	CIRCULANDO OESTE * <i>Circling West</i>	ALTN <i>Alternate Minimums</i>		
	LNAV MDA 980' (628')				
A	1.6 Km	980' (525')	VER PAG. GEN 2.19		
B		1300' (845')			
C		1460' (1005')			
D					
-Requiere aprobación RNP APCH. -RNP APCH approval RQRD.		* CAT C-D NA de noche * Cat C-D not authorized at night			
Veloc. Terrestre Kts	80	100	120	140	160
Angulo DES 2,93°	415'	518'	622'	726'	829'
MAPf en FA011					