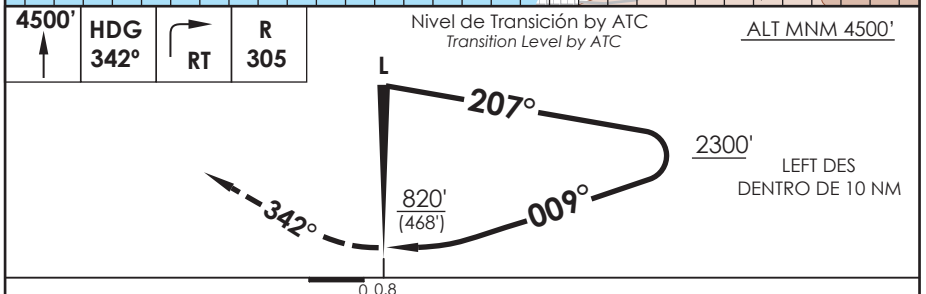
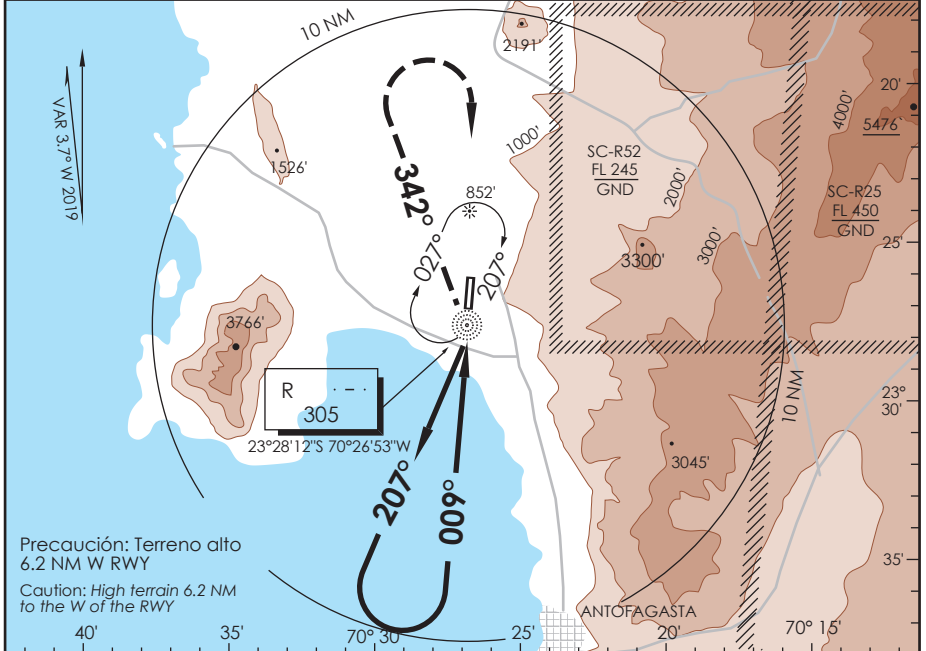


# AP. ANDRÉS SABELLA ANTOFAGASTA - CHILE

SCFA IAC 6  
NDB Rwy 01

APP ANTOFAGASTA RADAR Antofagasta Approach 120.9 / 119.3		TORRE ANTOFAGASTA Antofagasta Tower 118.1		CONTROL TERRESTRE Ground Control 121.9	
L "R" <b>305</b>	FINAL APCH CRS <b>009°</b>	<b>WO FAF</b>	MDA(H) <b>820' (468')</b>	AD Elev. THR 01 Elev <b>455'</b>	7200 FT MSA 25 NM R
APCH FRUSTRADA: Ascenso a 4500' HDG 342°, viraje derecha directo L "R", luego según autorización ATC. Missed Apch: Climb to 4500' on HDG 342°, right turn direct to "R" L, then according to ATC clearance.					



CATEGORÍA	DIRECTO Rwy 01	Straight in Rwy 01	CIRCULANDO OESTE *	ALTN
			Circling West	Alternate Minimums
	MDA <b>820' (468')</b>			
A	1.6 Km		960' (505')	VER PAG. GEN 2.19
B	1.6 Km		1300' (845')	
C	2.4 Km		1460' (1005')	
D	2.4 Km		1460' (1005')	

\* CAT C-D NA de noche / Cat C-D not authorized at night