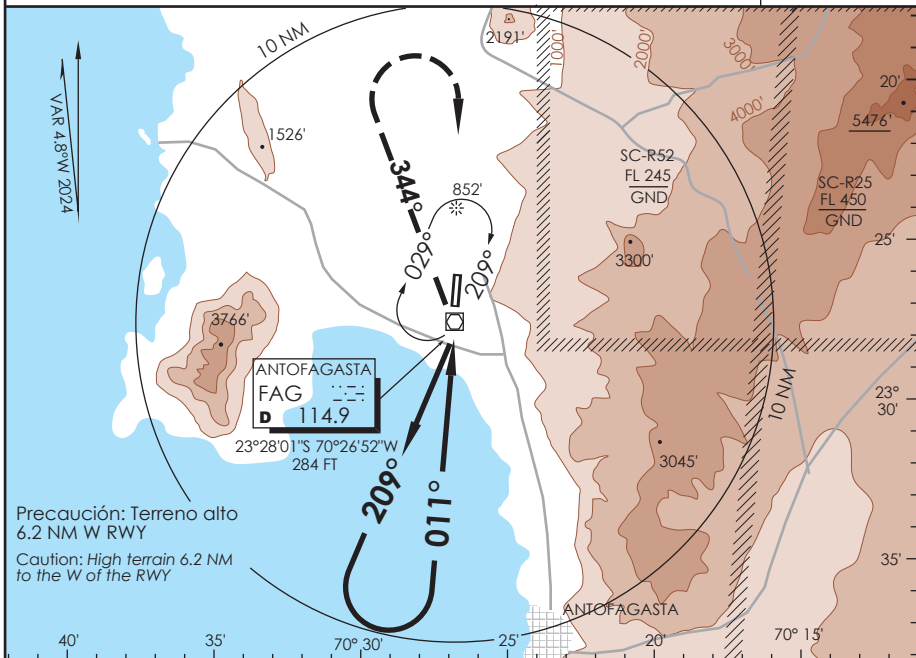


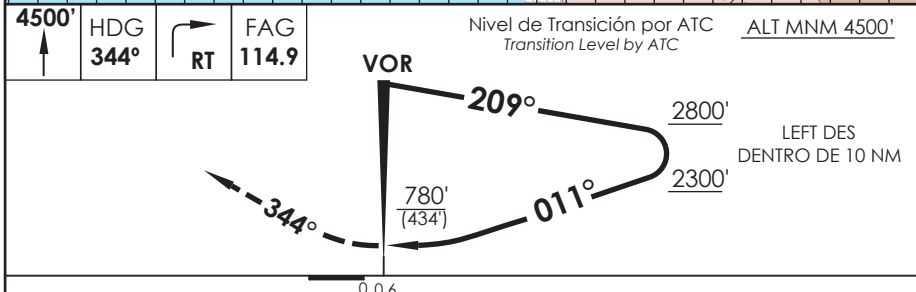
# AP. ANDRÉS SABELLA ANTOFAGASTA - CHILE

SCFA IAC 5  
VOR Y Rwy 01

APP ANTOFAGASTA RADAR Antofagasta Approach 120.9 / 119.3		TORRE ANTOFAGASTA Antofagasta Tower 118.1		CONTROL TERRESTRE Ground Control 121.9	
VOR FAG <b>114.9</b>	FINAL APCH CRS <b>011°</b>	WO FAF	MDA(H) <b>780' (434')</b>	AD Elev. THR 01 Elev <b>455'</b>	<b>346'</b>
APCH FRUSTRADA: Ascenso a 4500' HDG 344°, viraje derecha directo FAG VOR, luego según autorización ATC. Missed Apch: Climb to 4500' on HDG 344°, right turn direct to FAG VOR, then according to ATC clearance.					7200 FT MSA 25 NM FAG



Precaución: Terreno alto  
6.2 NM W RWY  
Caution: High terrain 6.2 NM  
to the W of the RWY



CATEGORÍA	DIRECTO RWY 01 <i>Straight in RWY 01</i>		CIRCULANDO OESTE * <i>Circling West</i>	ALTN <i>Alternate Minimums</i>	
	MDA <b>780' (434')</b>				
	A		960' (505')	1.6 Km	VER PAG. GEN 2.19
	B	1.6 Km	1300' (845')	2.0 Km	
C	2.0 Km		4.0 Km		
D		1460' (1005')	4.8 Km		
* CAT C-D NA de noche / <i>Cat C-D not authorized at night</i>					

DASA / SECCION AIS-MAP