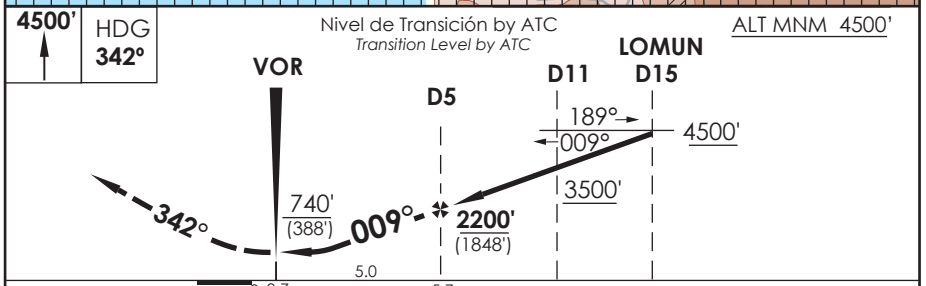
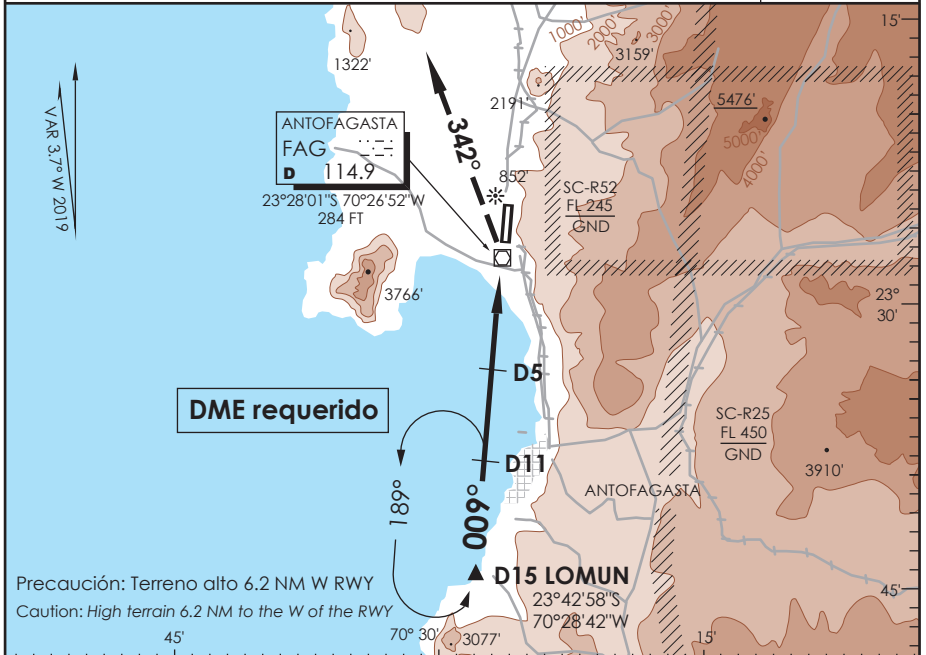


AP. ANDRÉS SABELLA ANTOFAGASTA - CHILE

SCFA IAC 4
VOR Z Rwy 01

| | | | | | |
|--|-------------------------------|--|------------------------------|---|--------------------------|
| APP ANTOFAGASTA RADAR Antofagasta Approach 120.9 / 119.3 | | TORRE ANTOFAGASTA Antofagasta Tower 118.1 | | CONTROL TERRESTRE Ground Control 121.9 | |
| VOR FAG 114.9 | FINAL APCH CRS 009° | MNM ALT D 5.0 2200' (1848') | MDA(H) 740' (388') | AD Elev. THR 01 Elev 455' | 352' |
| APCH FRUSTRADA: Ascenso a 4500' HDG 342°, luego según autorización ATC. Missed Apch: Climb to 4500' on HDG 342°, then according to ATC clearance. | | | | | 7200 FT MSA 25 NM FAG |



| | | | | | |
|--|--|--|-----------------------------------|------|------|
| Categoría | DIRECTO RWY 01 <i>Straight in RWY 01</i> | CIRCULANDO OESTE * <i>Circling West</i> | ALTN <i>Alternate Minimums</i> | | |
| | MDA 740' (388') | | | | |
| A | | 960' (505') | 1.6 Km | | |
| B | 1.6 Km | 1300' | 2.0 Km | | |
| C | 2.0 Km | (845') | 4.0 Km | | |
| D | | 1460' (1005') | 4.8 Km | | |
| * CAT C-D NA de noche / <i>Cat C-D not authorized at night</i> | | | | | |
| Veloc. Terrestre Kts | 80 | 100 | 120 | 140 | 160 |
| Angulo DES 2,97° PFM | 425' | 525' | 631' | 736' | 841' |
| FAF to MAP 5.0 NM | 3:45 | 3:00 | 2:30 | 2:08 | 1:52 |

DASA / SECCION AIS-MAP