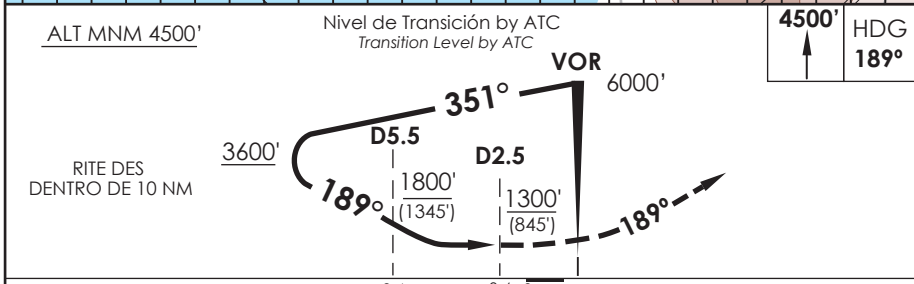
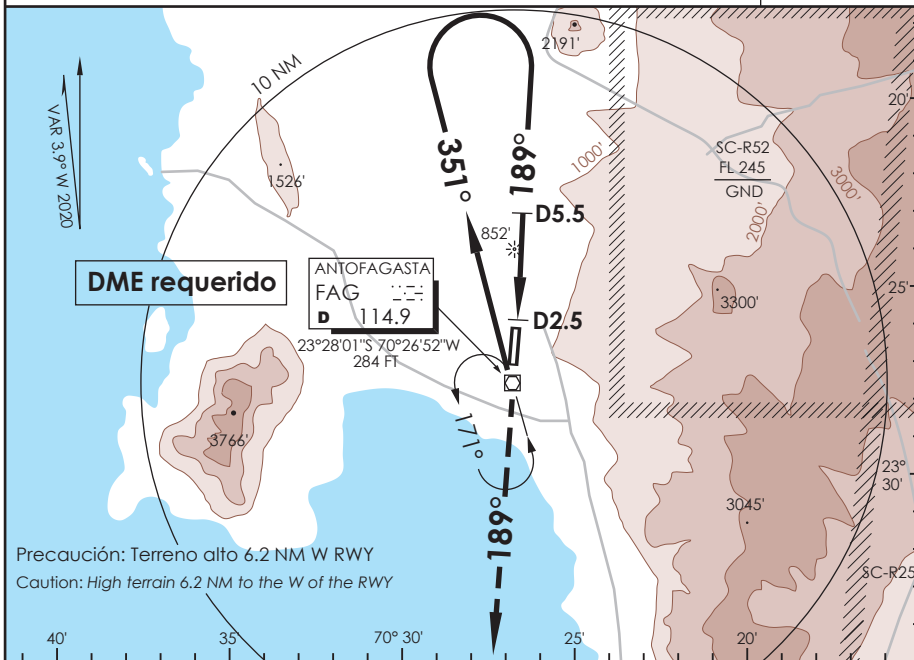


AP. ANDRÉS SABELLA ANTOFAGASTA - CHILE

SCFA IAC 3
VOR X Rwy 19

APP ANTOFAGASTA RADAR Antofagasta Approach 120.9 / 119.3		TORRE ANTOFAGASTA Antofagasta Tower 118.1		CONTROL TERRESTRE Ground Control 121.9	
VOR FAG 114.9	FINAL APCH CRS 189°	WO FAF	MDA(H) 1300' (845')	AD Elev. THR 19 Elev 455'	7200 FT MSA 25 NM FAG
APCH FRUSTRADA: Ascenso a 4500' HDG 189°, luego según autorización ATC. Missed Apch: Climb to 4500' on HDG 189°, then according to ATC clearance.					



C	DIRECTO RWY 19 <i>Straight in RWY 19</i>	CIRCULANDO OESTE <i>Circling West</i>		ALTN <i>Alternate Minimums</i>
	MDA 1300' (845')			
A	1.6 Km	1300' (845')	2.0 Km	VER PAG. GEN 2.19
B	2.0 Km		4.0 Km	
C	4.0 Km	1460' (1005')	4.8 Km	
D	4.4 Km			
CTN: Pendiente de descenso de 3.5° o superior (6.1%) CTN: Descent gradient greater than 3.5° (6.1%)				