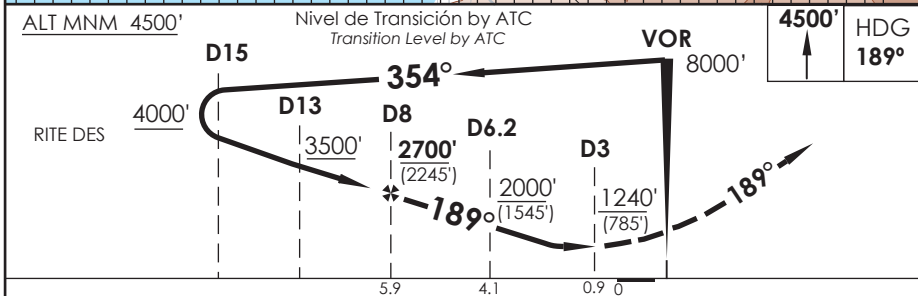
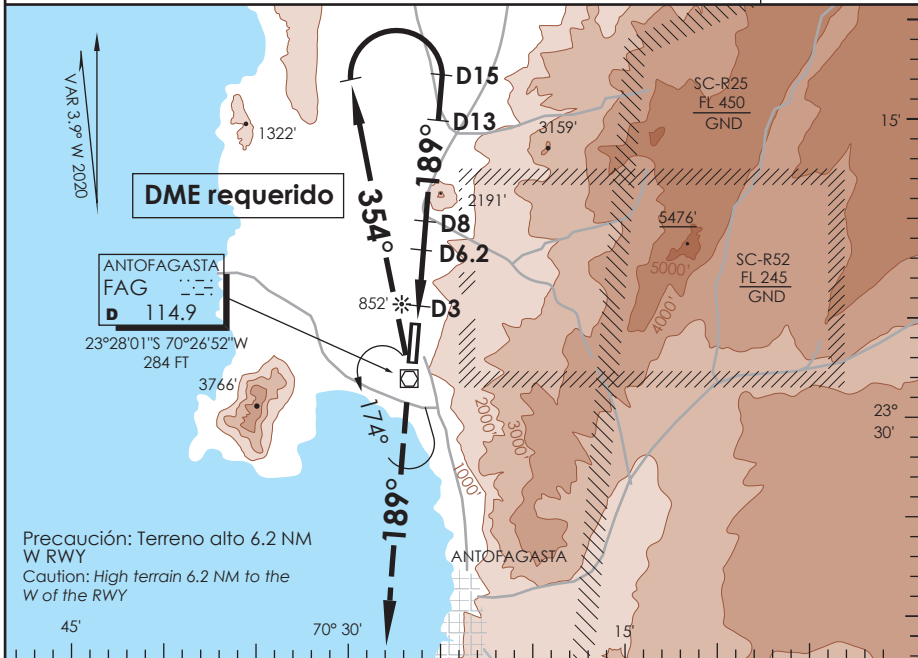


AP. ANDRÉS SABELLA ANTOFAGASTA - CHILE

SCFA IAC 2
VOR Y Rwy 19

APP ANTOFAGASTA RADAR Antofagasta Approach 120.9 / 119.3		TORRE ANTOFAGASTA Antofagasta Tower 118.1		CONTROL TERRESTRE Ground Control 121.9	
VOR FAG 114.9	FINAL APCH CRS 189°	MNM ALT D 8.0 2700' (2245')	MDA(H) 1240' (785')	AD Elev. THR 19 Elev 455'	7200 FT MSA 25 NM FAG
APCH FRUSTRADA: Ascenso a 4500' HDG 189°, luego según autorización ATC. Missed Apch: Climb to 4500' on HDG 189°, then according to ATC clearance.					



CATEGORÍA	DIRECTO RWY 19 <i>Straight in RWY 19</i>	CIRCULANDO OESTE <i>Circling West</i>	ALTN <i>Alternate Minimums</i>		
	MDA 1240' (785')		VER PAG. GEN 2.19		
A	1.6 Km	1240' (785')	1.6 Km		
B	2.0 Km	1300'	2.0 Km		
C	3.6 Km	(845')	4.0 Km		
D	4.0 Km	1460' (1005')	4.8 Km		
Veloc. Terrestre Kts	80	100	120	140	160
Angulo DES 3,5° FPM	496'	619'	743'	867'	991'
FAF to MAPt 5.0 NM	3:45	3:00	2:30	2:09	1:53

CAMBIO: VAR / TA
Change: VAR / TA

DGAC AMDT 86

03 DICIEMBRE 2020

DASA / SECCION AIS-WAP