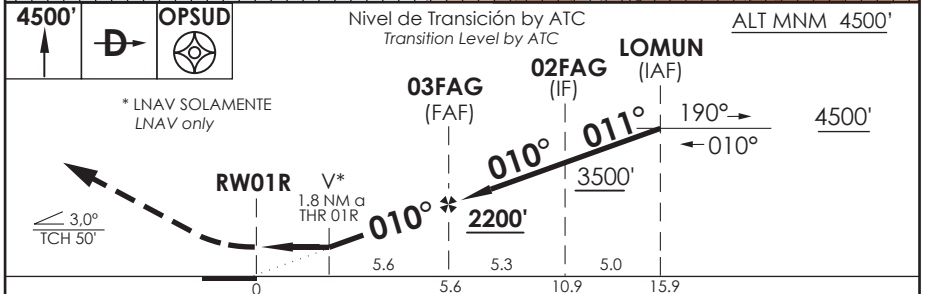
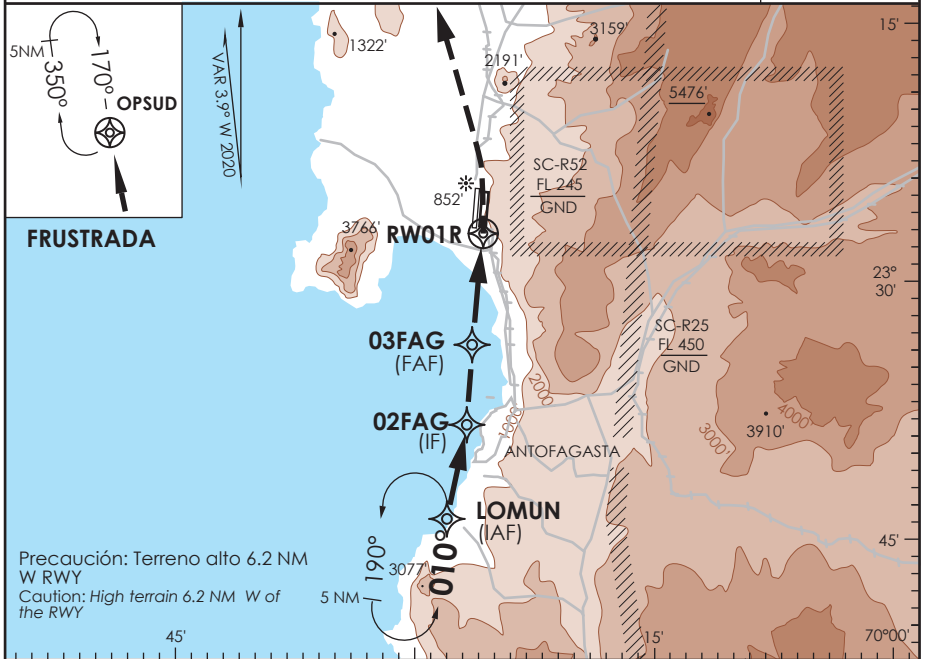


AP. ANDRÉS SABELLA ANTOFAGASTA - CHILE

SCFA IAC 11
RNAV (GNSS) Rwy 01R

APP ANTOFAGASTA RADAR Antofagasta Approach	120.9 / 119.3	TORRE ANTOFAGASTA Antofagasta Tower	118.1	CONTROL TERRESTRE Ground Control	121.9
RNAV	FINAL APCH CRS 010°	MNM ALT 03FAG 2200'	LNAV MDA(H) 1000' (627')	AD Elev. 451'	THR 01R Elev 373'
APCH FRUSTRADA: Ascenso 4500' directo OPSUD, ingreso HLDG 170° derecho o según autorización ATC. Missed Apch: Climb to 4500' direct to OPSUD, enter on HLDG 170° right or according to ATC clearance.					6400 FT MSA 25 NM RW01R



C	DIRECTO RWY 01R <i>Straight in RWY 01R</i>		CIRCULANDO OESTE ** Circling West	ALTN Alternate Minimums	
	LNAV/VNAV DA 900' (527')	LNAV MDA 1000' (627')			
A	1.6 Km		1200' (749')	VER PAG. GEN 2.19	
B			1.6 Km		
C	2.3 Km	2.9 Km	1410' (959')		
D			2050' (1599')	4.8 Km	
-Requiere aprobación RNP APCH. -RNP APCH approval RQRD.		**CAT C-D NA de noche **Cat C-D NA at night		Baro VNAV NA bajo 5°C o sobre 45°C. Baro VNAV NA below 5°C or above 45°C.	
Veloc. Terrestre Kts	80	100	120	140	160
Angulo DES 3°	425'	531'	637'	743'	849'
MAPf en RW01R					

CAMBIO: Nuevo PROC
Change: New PROC

DGAC

08 OCTUBRE 2020

DASA / SECCION AIS-MAP