

AP. ANDRÉS SABELLA
ANTOFAGASTA - CHILE

SCFA IAC 10
RNP Z Rwy 19 (AR)

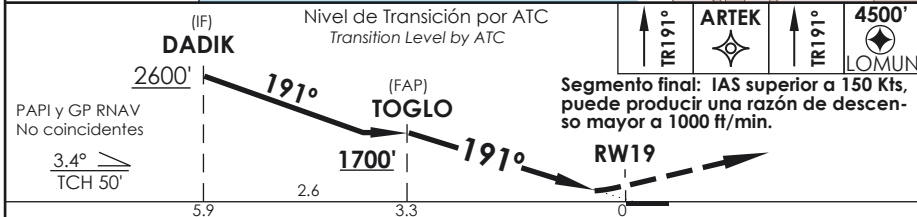
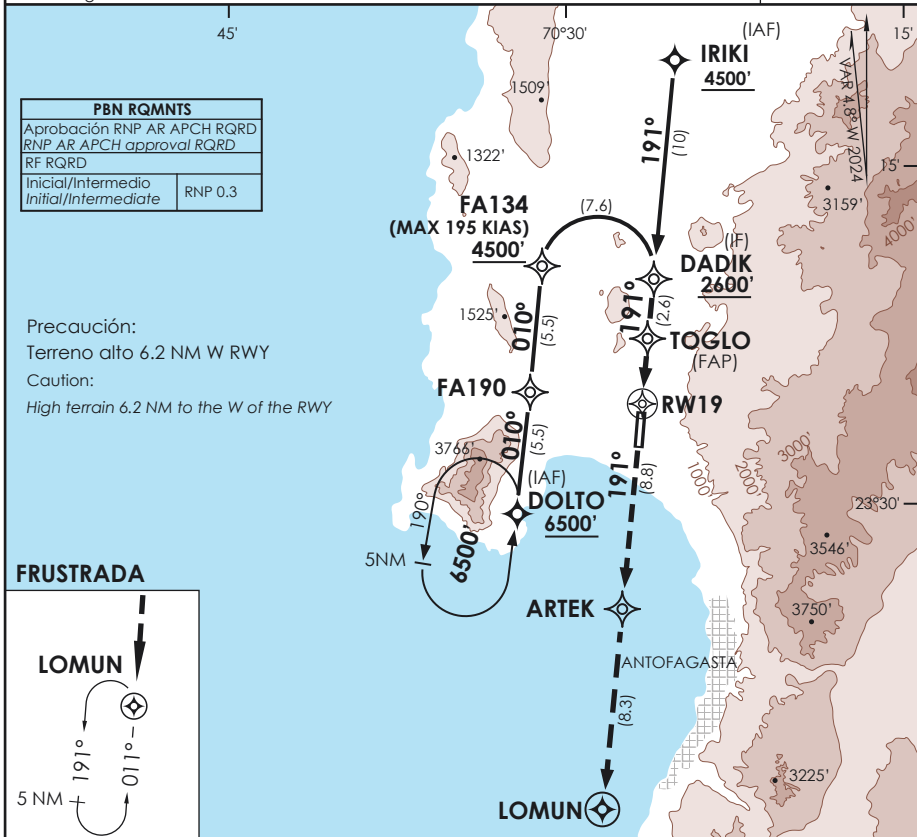
APP ANTOFAGASTA RADAR Antofagasta Approach	120.9 / 119.3	TORRE ANTOFAGASTA Antofagasta Tower	118.1	CONTROL TERRESTRE Ground Control	121.9
---	---------------	--	-------	-------------------------------------	-------

RNP	FINAL APCH CRS 191°	MNM ALT TOGLO 1700'	DA/H ver mínimos DA/H refer to minimums	AD Elev. THR 19 Elev	455' 455'
------------	-------------------------------	-------------------------------	--	-------------------------	----------------------------

APCH FRUSTRADA: Ascenso en TR191° directo a ARTEK, posterior directo a LOMUN, ingrese en HLDG a 4500' o según autorización ATC.

Missed Apch: Climb on TR191° direct to ARTEK, then direct to LOMUN, enter in HLDG 4500' or according to ATC clearance.

7200 FT
MSA 25 NM RW19



C A T E G O R Í A	DIRECTO RWY 19 Straight in RWY 09		RNP AR RWY 19 SCFA: Para sistemas Baro VNAV no compensados CAT A/B/C PROC NA BLW 7°C ó ABV 50°C CAT D PROC NA BLW 7°C ó ABV 30°C
	RNP 0.1 DA 880' (422')	RNP 0.30 DA 1290' (829')	
A	2.0 Km	4.0 Km	MNM ALTN RNP 0.30: VER PAG GEN 2.19 See pag 2.19
B			
C			
Veloc. Terrestre Kts		80 100 120 140 160	RQR AUTORIZACIÓN ESPECIAL PARA ACFT Y CREW SPECIAL ACFT AND AIRCREW AUTHORIZATION RQRD
Angulo DES 3.4°		481' 602' 722' 842' 963'	
MAPt en DA			

DASA / SECCION AIS-MAP