

AP. ARTURO MERINO BENITEZ
SANTIAGO - CHILE

SCEL IAC 9
VOR Rwy 35L

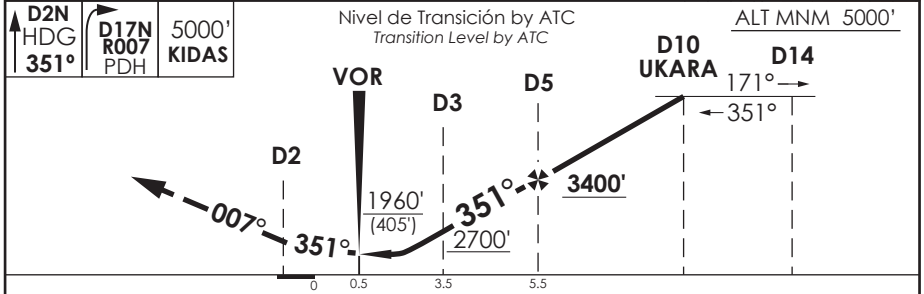
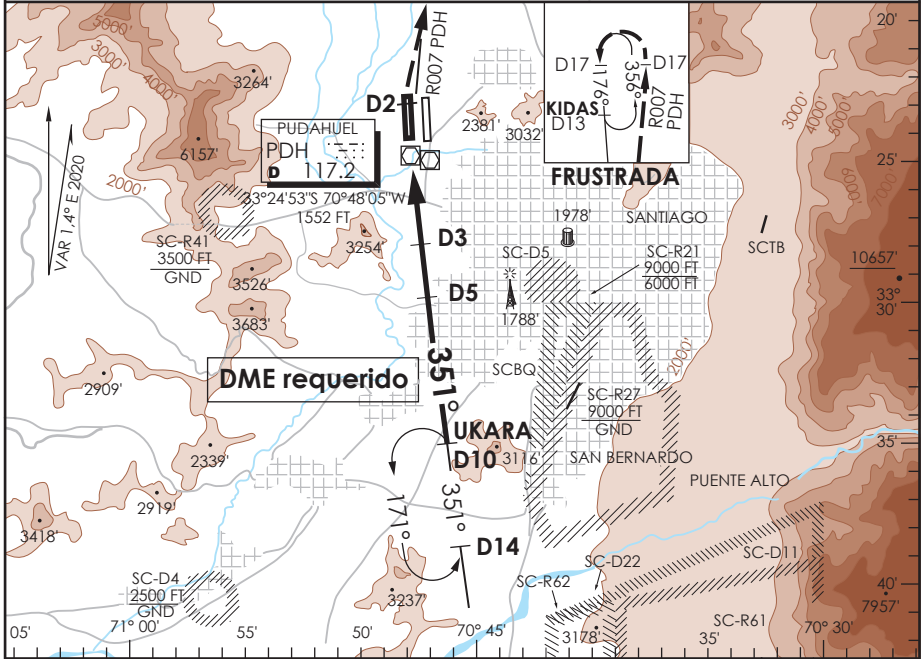
ATIS 132.1	SANTIAGO RADAR Santiago Radar 119.7/129.7	TORRE SANTIAGO Santiago Tower 118.1/118.35	CONTROL TERRESTRE GNDC W 122.5/122.6	Ground Control GNDC E 122.2/122.6
---------------	--	---	---	--------------------------------------

VOR PDH 117.2	FINAL APCH CRS 351°	MNM ALT D5 3400'	MDA (H) 1960'(405')	AD Elev. 1555' THR 35L Elev 1550'	19000 FT
-------------------------	-------------------------------	----------------------------	-------------------------------	---	----------

APCH FRUSTRADA: Ascenso HDG 351° hasta D2 N, continuar ascenso a 5000' via R007 PDH hasta D17 N, viraje izquierda ingrese HLDG entre D17 N y KIDAS, 176° izquierdo (R356) o según autorización ATC.

Missed Apch: Climb on HDG 351° until D2 N, continue climbing to 5000' via R007 PDH to D17 N, left turn to enter on HLDG between D17 N and KIDAS, 176° left (R356) or according to ATC clearance.

MSA 25 NM PDH



CATEGORIA	DIRECTO RWY 35L Straight in RWY 35L *	CIRCULANDO Circling	ALTN Alternate Minimums
	MDA 1960' (405')		
	A	NA	VER PAG. GEN 2.19 See page GEN 2.19
	B		
C	2.0 Km		
D			

* Desalineado 5° respecto a RCL / Offset 5° from RWY center line

Veloc. Terrestre Kts	80	100	120	140	160
Angulo DES 3.1° FPM	439'	548'	658'	768'	878'
Min:Sec(FAF to MAPT 5.0)	3:45	3:00	2:30	2:09	1:53

DASA / SECCION AIS-MAP