

AP. ARTURO MERINO BENITEZ
SANTIAGO - CHILE

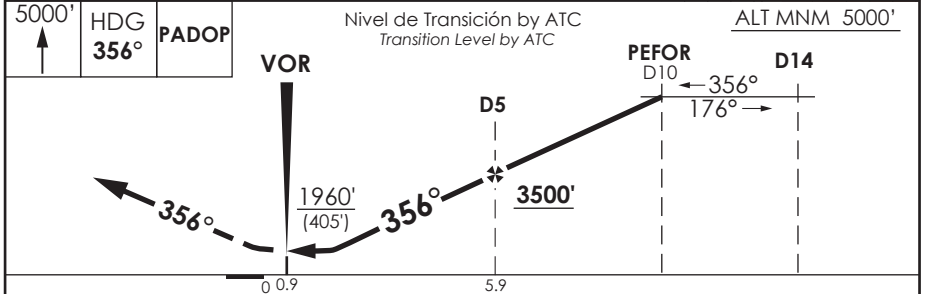
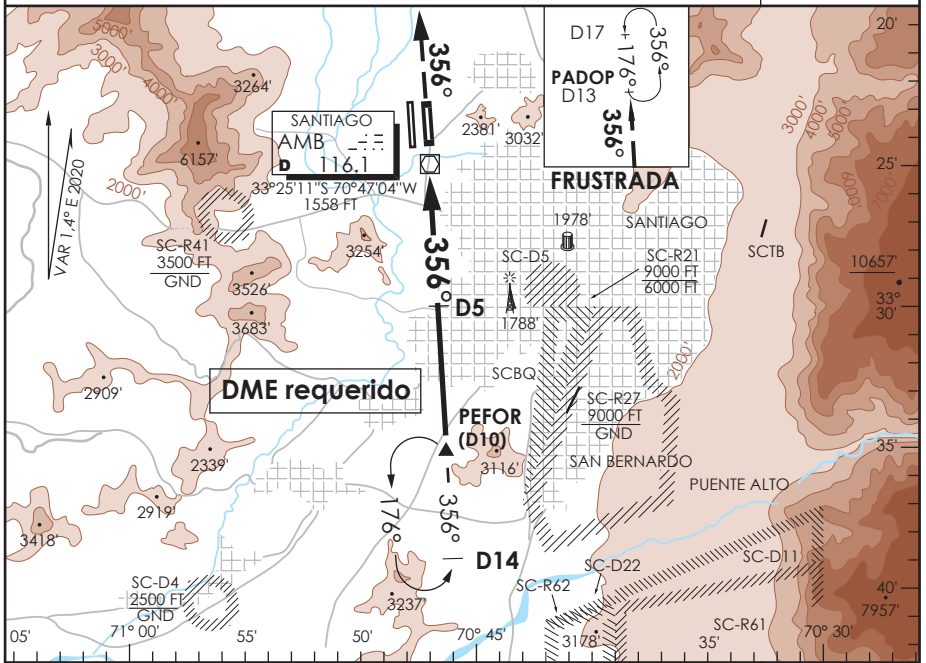
SCEL IAC 8
VOR Rwy 35R

ATIS 132.1	SANTIAGO RADAR Santiago Radar 119.7/129.7	TORRE SANTIAGO Santiago Tower 118.1/118.35	CONTROL TERRESTRE Ground Control GNDC W 122.5/122.6	GNDC E 122.2/122.6
---------------	--	---	---	--------------------

VOR AMB 116.1	FINAL APCH CRS 356°	MNM ALT D5 3500'	MDA (H) 1960' (405')	AD Elev. 1555' THR 35R Elev. 1555'	19000 FT
-------------------------	-------------------------------	----------------------------	--------------------------------	---	----------

APCH FRUSTRADA: Ascenso a 5000' R356° directo PADOP, ingrese a HLDG 176° izquierdo o según autorización ATC.
 Missed Apch: Climb to 5000' on HDG 356° direct to PADOP, enter on HLDG 176° left or according to ATC clearance.

MSA 25 NM AMB



CATEGORIA	DIRECTO RWY 35R <i>Straight in RWY 35R</i>		CIRCULANDO <i>Circling</i>	ALTN <i>Alternate Minimums</i>
	MDA 1960' (405')			
	SSALS	WO SSALS	NA	VER PAG. GEN 2.19 See page GEN 2.19
A	1.2 Km	1.6 Km		
B				
D	1.6 Km	2.0 Km		

Veloc. Terrestre Kts	80	100	120	140	160
Angulo DES 3.0° FPM	425'	531'	637'	743'	849'
Min:Sec (FAF to MAPT 5.0)	3:45	3:00	2:30	2:09	1:53

DASA / SECCION AIS-MAP