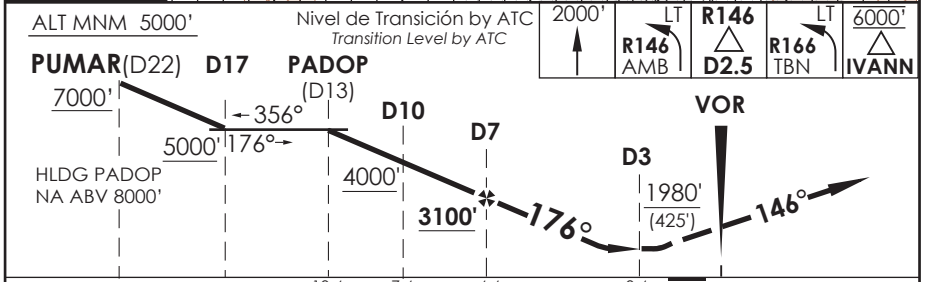
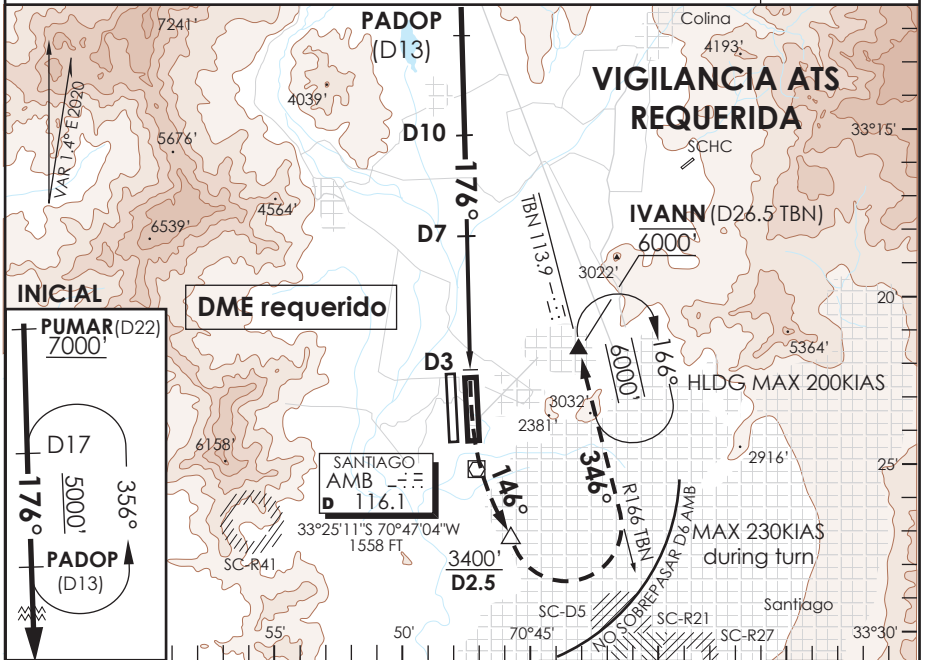


AP. ARTURO MERINO BENITEZ
SANTIAGO - CHILE

SCEL IAC 7
VOR Rwy 17L

ATIS 132.1 Santiago Radar 119.7/129.7	TORRE SANTIAGO Santiago Tower 118.1/118.35	CONTROL TERRESTRE Ground Control GNDC W 122.5/122.6 GNDC E 122.2/122.6	
VOR AMB 116.1	FINAL APCH CRS 176°	MNM ALT D7 3100'	MDA (H) 1980' (425')
		AD Elev. 1555' THR 17L Elev. 1550'	
APCH FRUSTRADA: ASC 2000' para interceptar R146 AMB hasta D2.5, viraje izquierda interceptar R166 TBN DCT IVANN 6000', luego según AUTH ATC. Missed Apch: Climb to 2000' to intercept R146 AMB until D2.5, left turn to intercept R166 TBN DCT IVANN 6000', then according ATC clearance.			19000 FT MSA 25 NM AMB



C R O N O M E T R O	DIRECTO RWY 17L Straight in RWY 17L		CIRCULANDO Circling	ALTN Alternate Minimums
	MDA 1980' (425')			
A	1.2 Km	1.6 Km	NA	VER PAG. GEN 2.19 See page GEN 2.19
B	1.6 Km	2.2 Km		
C	2.0 Km	2.4 Km		
D				

*MNM razón ASC APCH Frustrada: 300 FT/NM hasta 6000'

Veloc. Terrestre Kts	80	100	120	140	160
Angulo DES 3.2° FPM	453'	566'	679'	793'	906'
MIN:SEC (FAF TO MAP1 4.0)	3:00	2:24	2:00	1:43	1:30

CAMBIO: FREQ GNDC
 Change: GNDC FREQ

DGAC AMDT 85

13 AGOSTO 2020

DASA / SECCION AIS-MAP