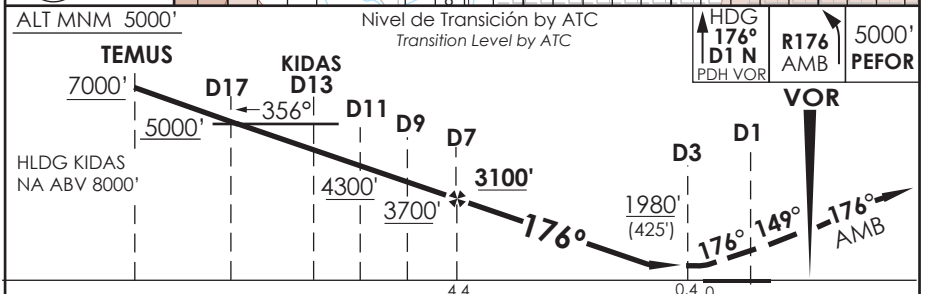
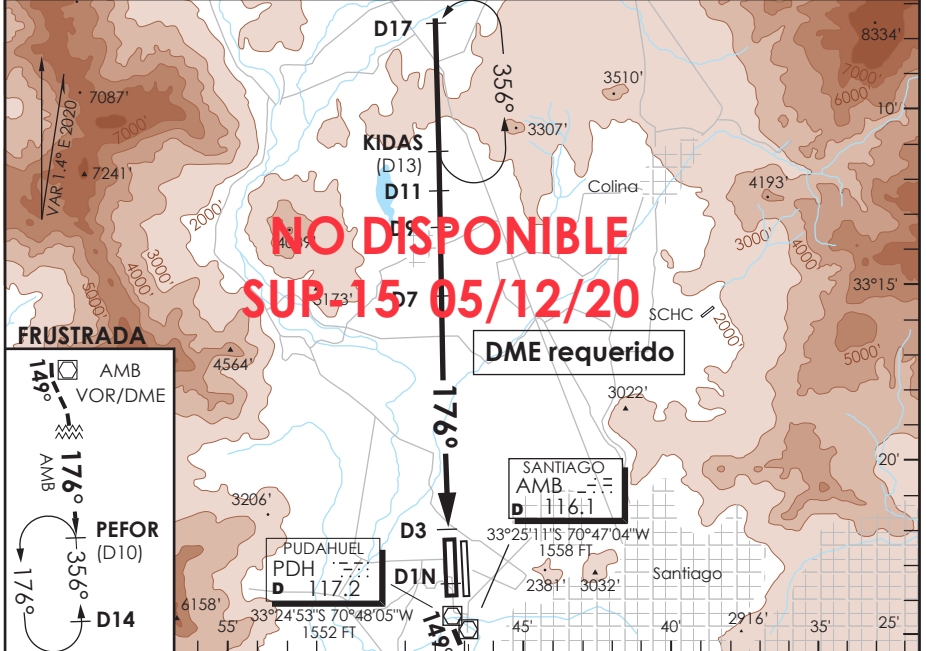


AP. ARTURO MERINO BENITEZ
SANTIAGO - CHILE

SCEL IAC 6
VOR Rwy 17R

ATIS 132.1	SANTIAGO RADAR Santiago Radar 119.7/129.7	TORRE SANTIAGO Santiago Tower 118.1/118.35	CONTROL TERRESTRE Ground Control GNDC W 122.5/122.6 GNDC E 122.2/122.6	
VOR PDH 117.2	FINAL APCH CRS 176°	MNM ALT D7 3100'	MDA (H) 1980' (425')	AD Elev. 1555' THR 17R Elev. 1551'
APCH FRUSTRADA: Ascenso HDG 176° hasta D1N PDH, vire izquierda HDG 149° para interceptar R176 AMB VOR en ascenso a 5000' directo PEFOR, ingrese HLDG 356° izquierdo o según autorización ATC. Missed Apch: Climb on HDG 176° until D1N PDH, turn left HDG 149° to intercept R176 AMB VOR climbing to 5000' direct to PEFOR, enter on HLDG 356° left or according to ATC clearance.				19000 FT MSA 25 NM AMB



C A T E G O R Í A	DIRECTO RWY 17R Straight in RWY 17R		CIRCULANDO Circling	ALTN Alternate Minimums		
	MDA 1980' (425')					
A	1.2 Km	1.6 Km	NA	VER PAG. GEN 2.19 See page GEN 2.19		
B	1.6 Km	2.0 Km				
C	2.0 Km	2.4 Km				
D						
Veloc. Terrestre Kts		80	100	120	140	160
Angulo DES 3.2° FPM		453'	566'	679'	793'	906'
MIN:SEC (FAF TO MAP1 4.0)		3:00	2:24	2:00	1:43	1:30

DASA / SECCION AIS-MAP