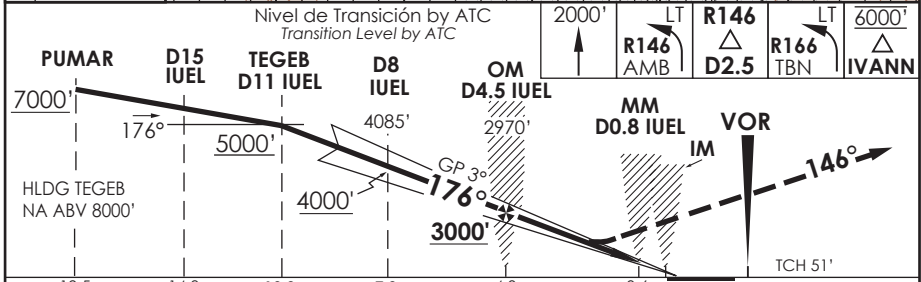
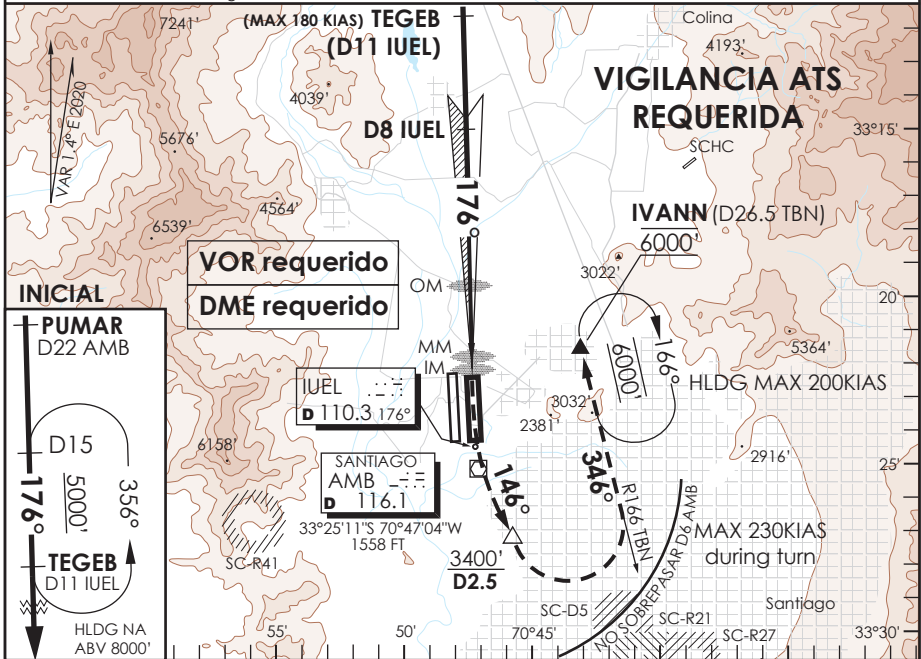


AP. ARTURO MERINO BENITEZ
SANTIAGO - CHILE

SCEL IAC 5
ILS X Rwy 17L

ATIS 132.1	SANTIAGO RADAR Santiago Radar 119.7/129.7	TORRE SANTIAGO Santiago Tower 118.1/118.35	CONTROL TERRESTRE GNDC W 122.5/122.6	Ground Control GNDC E 122.2/122.6
LOC IUEL 110.3	FINAL APCH CRS 176°	GS OM 3000'	ILS DA (H) 1960'(410')	AD Elev. 1555' THR 17L Elev. 1550'
APCH FRUSTRADA: ASC 2000' para interceptar R146 AMB hasta D2.5, viraje izquierda interceptar R166 TBN DCT IVANN 6000', luego según AUTH ATC. Missed Apch: Climb to 2000' to intercept R146 AMB until D2.5, left turn to intercept R166 TBN DCT IVANN 6000', then according ATC clearance.				19000 FT MSA 25 NM AMB



CATEGORIA	* DIRECTO RWY 17L Straight in RWY 17L				CIRCULANDO Circling	ALTN Alternate Minimums
	ILS DA 1960' (410')		**LOC WO GP MDA 1980' (430')			
A	ALSF-2	WO ALSF-2	ALSF-2	WO ALSF-2	NA	VER PAG. GEN 2.19 See page GEN 2.19
B	1.2 Km	2.1 Km	1.2 Km	1.6 Km		
C			1.3 Km	2.2 Km		
D						

* MNM razón ASC APCH Frustrada: 300FT/NM hasta 6000'						APCH simultanea AUTH con RNAV (RNP) T RWY 17R Simultaneous APCH authorized with RNAV (RNP) T RWY 17R							
Veloc. Terrestre Kts		80	100	120	140	160	**WO IUEL DME PROC NA						
GP 3° FPM								PROC NOT AUTHORIZED WITHOUT IUEL DME					
MIN:SEC(FAF to MAPt)													

DASA / SECCION AIS-MAP