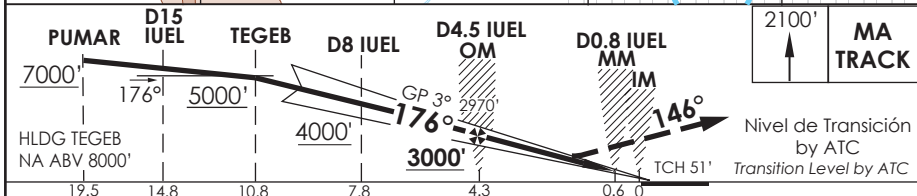
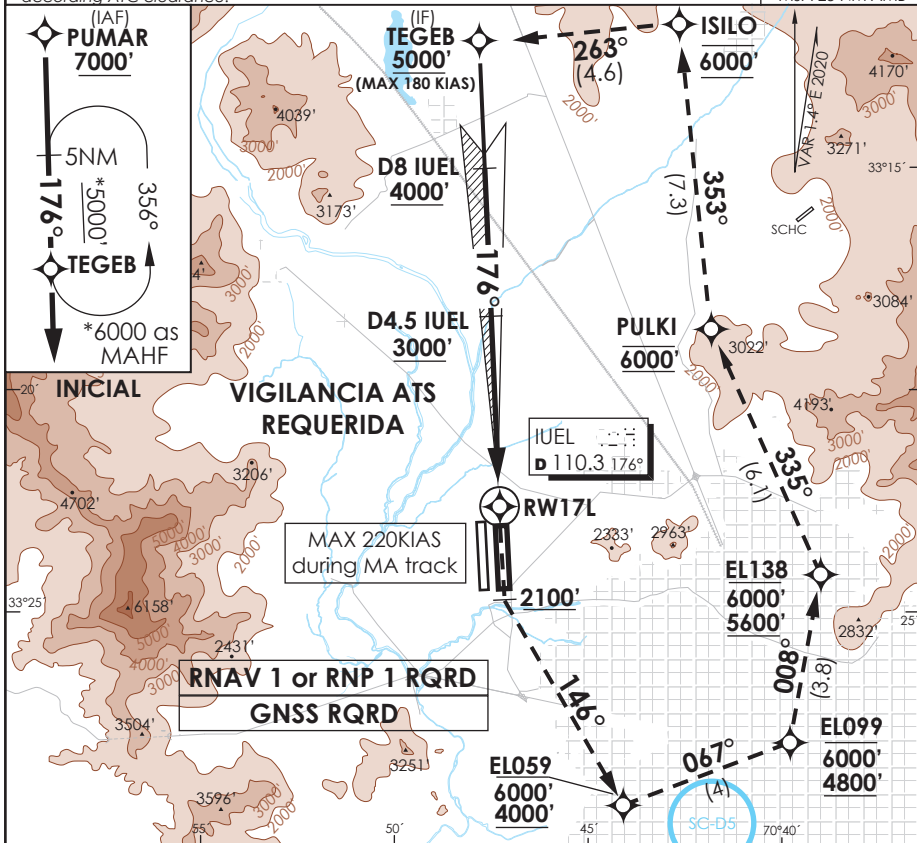


ATIS 132.1	SANTIAGO RADAR Santiago Radar 119.7/129.7	TORRE SANTIAGO Santiago Tower 118.1/118.35	CONTROL TERRESTRE GND C W 122.5/122.6	Ground Control GND C E 122.2/122.6
LOC IUEL 110.3	FINAL APCH CRS 176°	GS OM 3000'	ILS DA (H) 1750'(200')	AD Elev. 1555' THR 17L Elev. 1550'
APCH FRUSTRADA: ASC 2100' viraje izquierda para continuar vía RNAV MA TR to TEGEB 6000', luego según AUTH ATC. Missed Apch: Climb to 2100' left turn to continue via RNAV MA TR to TEGEB 6000', then according ATC clearance.				19000 FT MSA 25 NM AMB



C A T	* DIRECTO RWY 17L Straight in RWY 17L					CIRCULANDO Circling	ALTN Alternate Minimums
	ILS DA 1750' (200')		** LOC WO GP MDA 1980' (430')				
A	ALSF-2	ALSF-2	ALSF-2	ALSF-2	ALSF-2	NA	VER PAG. See page GEN 2.19 GEN 2.19
B	RVR 550m ó 0.8 Km	RVR 550m ó RVR 750m ó 0.8 Km	1.2 Km	1.2 Km	1.6 Km		
C			1.6 Km	2.0 Km	2.0 Km		
D			2.0 Km	2.4 Km	2.4 Km		
*MNM razón ASC APCH Frustrada: 320FT/NM hasta 6000'					APCH simultanea AUTH con RNAV (RNP) T RWY 17R Simultaneous APCH authorized with RNAV (RNP) T RWY 17R		
Veloc. Terrestre Kts		80	100	120	140	160	**WO IUEL DME PROC NA
GP 3° FPM							PROC NOT AUTHORIZED WITHOUT IUEL DME
MIN:SEC (FAF TO MAP)							