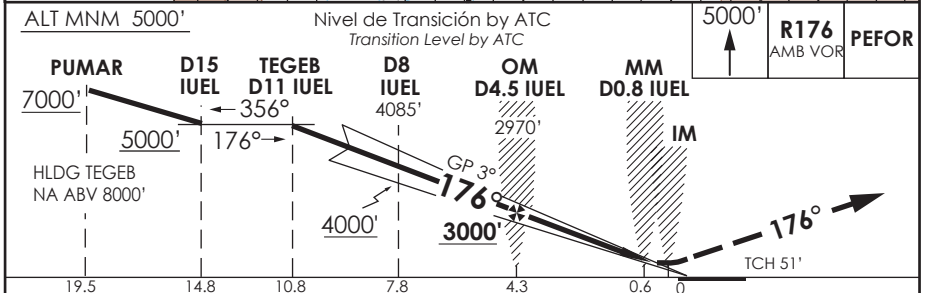
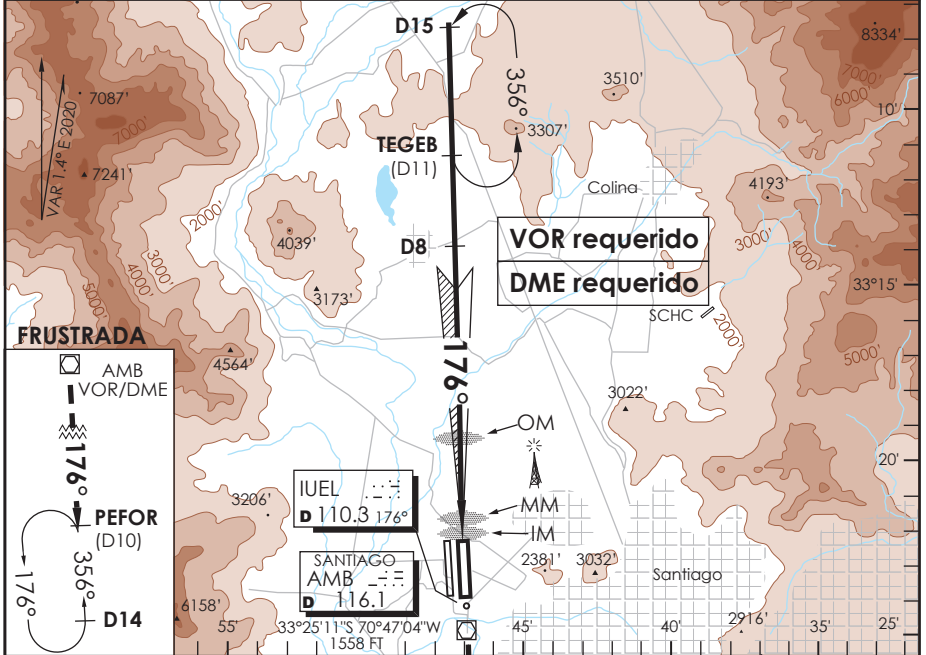


**SANTIAGO - CHILE**

ATIS 132.1	SANTIAGO RADAR Santiago Radar 119.7/129.7	TORRE SANTIAGO Santiago Tower 118.1/118.35	CONTROL TERRESTRE Ground Control GNDC W 122.5/122.6 GNDC E 122.2/122.6
LOC IUEL <b>110.3</b>	FINAL APCH CRS <b>176°</b>	GS OM <b>3000'</b>	ILS DA (H) <b>1750' (200')</b>
APCH FRUSTRADA: Ascenso a 5000' R176 VOR AMB directo PEFOR, ingrese HLDG 356° izquierdo o según autorización ATC.			19000 FT
Missed Apch: Climb to 5000' on R176 AMB VOR direct to PEFOR, enter on HLDG 356° left or according to ATC clearance.			
			MSA 25 NM AMB



C D E F G H I J K L M N O P Q R S T U V W X Y Z	DIRECTO RWY 17L Straight in RWY 17L				CIRCULANDO Circling	ALTN Alternate Minimums
	ILS DA 1750' (200')		**LOC WO GP MDA 1980' (430')			
	ALSF-2	WO ALSF-2	ALSF-2	WO ALSF-2	NA	VER PAG. GEN 2.19 See page GEN 2.19
A	RVR 550m	RVR 550m*	1.2 Km	1.6 Km		
B	o RVR 750m	o RVR 750m	1.6 Km	2.0 Km		
C	o 0.8 Km	o 0.8 Km	2.0 Km	2.4 Km		
D						

* Ver página GEN 2.11 See page GEN 2.11		** WO IUEL DME PROC NA PROCEDURE NOT AUTHORIZED WITHOUT IUEL DME			
Veloc. Terrestre Kts	80	100	120	140	160
GP 3° FPM	425'	531'	637'	743'	849'
MIN. SEC (FAF TO MAP1 3.8)	2:51	2:17	1:54	1:38	1:26