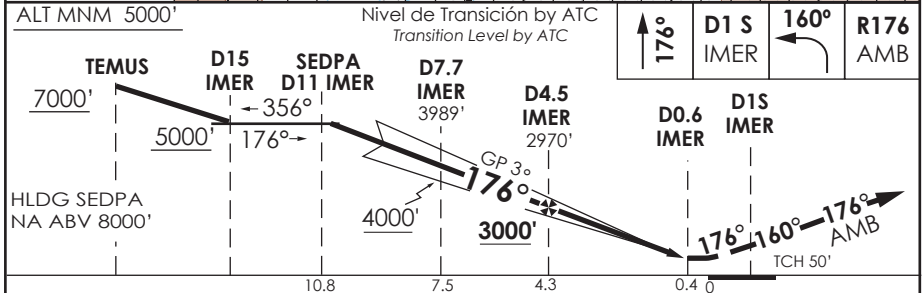
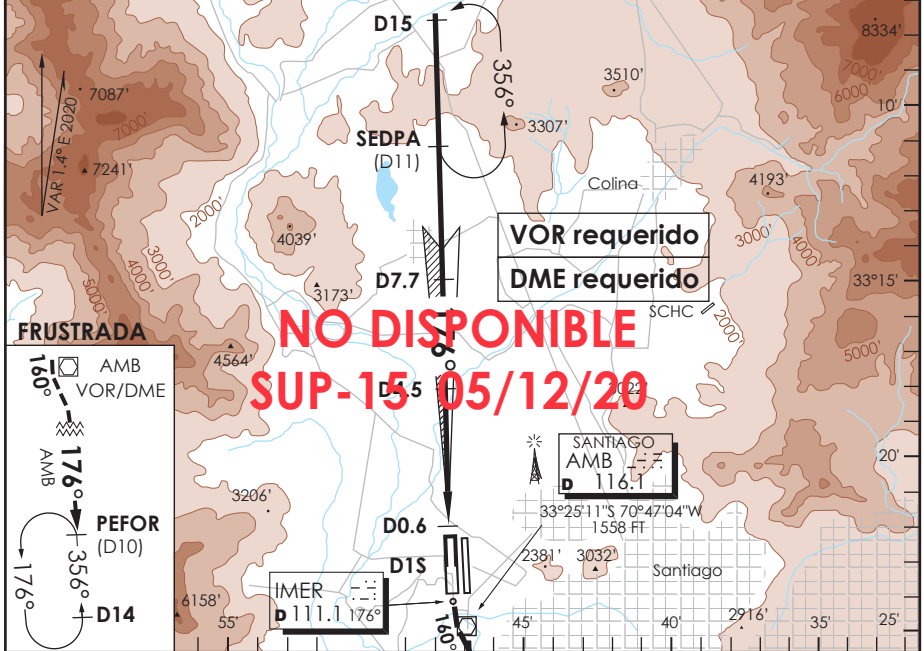


AP. ARTURO MERINO BENITEZ
SANTIAGO - CHILE

SCEL IAC 2
ILS Y Rwy 17R

ATIS 132.1	SANTIAGO RADAR Santiago Radar 119.7/129.7	TORRE SANTIAGO Santiago Tower 118.1/118.35	CONTROL TERRESTRE Ground Control GNDC W 122.5/122.6 GNDC E 122.2/122.6
LOC IMER 111.1	FINAL APCH CRS 176	GS DA.5 3000'	ILS DA (H) 1751'(200')
AD Elev. 1555' THR 17R Elev. 1551'			19000 FT
APCH FRUSTRADA: Ascenso HDG 176° hasta D15 IMER, vire HDG 160° para interceptar R176 AMB VOR en ascenso a 5000' directo PEFOR, ingrese HLDG 356° izquierdo o según autorización ATC. Missed Apch: Climb on HDG 176° until D15 IMER, turn to HDG 160° to intercept R176 AMB VOR climbing to 5000' direct to PEFOR, enter on HLDG 356° left or according to ATC clearance.			
			MSA 25 NM AMB



C R O M E T R O	DIRECTO RWY 17R Straight in RWY 17R				CIRCULANDO Circling	ALTN Alternate Minimums
	** ILS DA 1751' (200')		** LOC WO GP MDA 1980' (429')			
	ALSF-1	WO ALSF-1	ALSF-1	WO ALSF-1		
A	RVR 550m*	1.2 Km	1.2 Km	1.6 Km	NA	VER PAG. GEN 2.19 See page GEN 2.19
B	RVR 750m		1.6 Km	2.0 Km		
C	0.8 Km		2.0 Km	2.4 Km		
D						
* Ver página GEN 2.11 See page GEN 2.11			** WO IMER DME PROC NA Procedure not authorized without IMER DME			
Veloc. Terrestre Kts	80	100	120	140	160	
GP 3° FPM	425'	531'	637'	743'	849'	
MIN:SEC(FAF TO MAP1 3.9)	2:55	2:20	1:57	1:40	1:28	

DASA / SECCION AIS-MAP