

SANTIAGO - CHILE

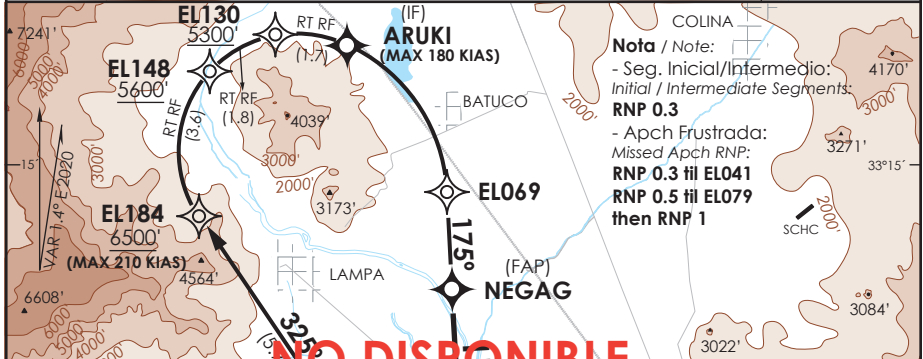
RNAV (RNP) T RWY 17R

ATIS 132.1	SANTIAGO RADAR Santiago Radar 119.7/129.7	TORRE SANTIAGO Santiago Tower 118.1/118.35	CONTROL TERRESTRE Ground Control GNDC W 122.5/122.6 GNDC E 122.2/122.6
---------------	--	---	--

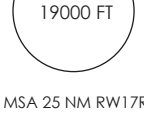
RNAV	FINAL APCH CRS 176°	MNM ALT NEGAG 3100'	DA/H ver mínimos DA/H refer to minimums	AD Elev. 1555' THR 17R Elev. 1551'
-------------	-------------------------------	-------------------------------	--	---

APCH FRUSTRADA: Ascenso en TR176° directo EL401- EL079 - GENPO - TELAG 6000', Ingrese HLDG 085° izquierdo o según autorización ATC.
 Missed Apch: Climb on TR176° direct to EL041- EL079 - GENPO - TELAG 6000', enter on HLDG 085° left or according to ATC clearance.

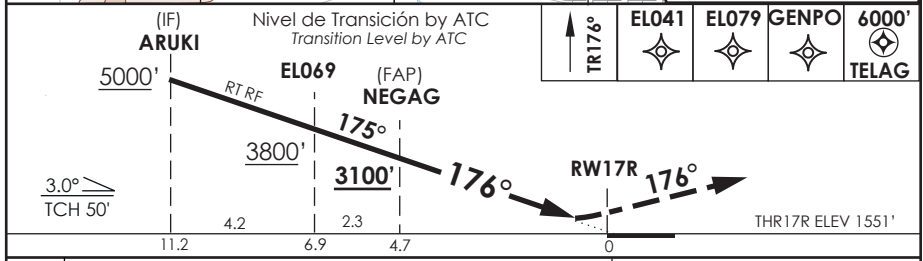
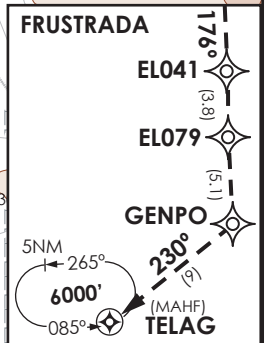
APCH simultánea AUTH con ILS T Rwy17L e ILS X Rwy17L
 Simultaneous APCH AUTH with ILS T Rwy17L and ILS X Rwy17L



Nota / Note:
 - Seg. Inicial/Intermedio:
 Initial / Intermediate Segments:
RNP 0.3
 - Apch Frustrada:
 Missed Apch RNP:
RNP 0.3 till EL041
RNP 0.5 till EL079
 then RNP 1



**NO DISPONIBLE
 SUP 15 05/12/20**



DIRECTO RWY 17R / Straight in RWY 17R						RNP AR RWY 17R SCEL: Requiere RF. Para sistemas Baro VNAV no compensados proc NA bajo -5°C o sobre 40°C. Autorización requerida de acuerdo a DAN 06-22. RF required. For uncompensated Baro VNAV systems procedure NA below -5°C or above 40°C. Authorization required according to DAN 06-22.					
C A T	APCH simultánea independiente VMC	RNP 0.15 DA 1820' (269')		RNP 0.3 DA 1870' (319')							
		ALSf-1	WO ALSf-1	ALSf-1	WO ALSf-1						
A	5.0 Km (ceíl 5000FT)		0.8 Km	1.6 Km	0.8 Km	1.6 Km					
B											
C											
D											
Veloc. Terrestre Kts		80	100	120	140	160	MNM ALTN RNP 0.3: VER PAG GEN 2.19 See pag 2.19				
Angulo DES 3° FPM		425'	531'	637'	743'	849'	RGR AUTORIZACIÓN ESPECIAL PARA ACFT Y CREW				
MAPt en DA							SPECIAL ACFT AND AIRCREW AUTHORIZATION RQRD				

DASA / SECCION AIS-WAY