

SANTIAGO - CHILE

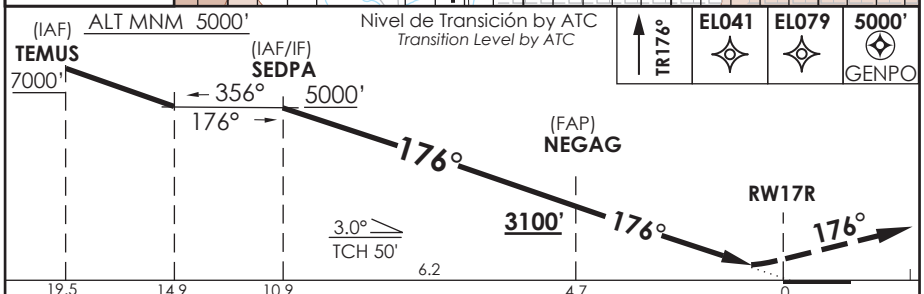
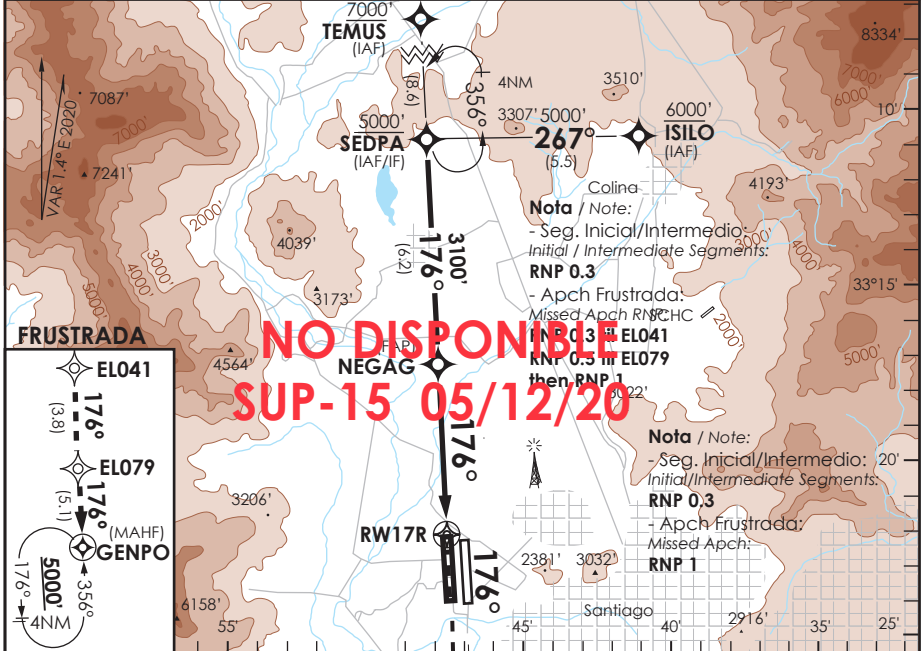
RNAV (RNP) X RWY 17R

ATIS 132.1	SANTIAGO RADAR Santiago Radar 119.7/129.7	TORRE SANTIAGO Santiago Tower 118.1/118.35	CONTROL TERRESTRE Ground Control GNDC W 122.5/122.6 GNDC E 122.2/122.6
---------------	----------------------------------------------	-----------------------------------------------	---------------------------------------------------------------------------------

RNAV	FINAL APCH CRS 176°	MNM ALT NEGAG 3100'	DA/H ver mínimos DA/H refer to minimums	AD Elev. 1555' THR 17R Elev. 1551'	19000 FT
-------------	-------------------------------	-------------------------------	--------------------------------------------	-----------------------------------------------------	----------

APCH FRUSTRADA: Ascenso en TR176° directo a EL041 - EL079 - GENPO 5000', ingrese HLDG 356° izquierdo o según autorización ATC.
Missed Apch: Climb on TR176° direct to EL041 - EL079 - GENPO, 5000', enter on HLDG 356° left or according to ATC clearance.

MSA 25 NM RW17R



C A T E G O R I A	DIRECTO RWY 17R / Straight in RWY 17R				RNP AR RWY 17R SCEL: Requiere RF. Para sistemas Baro VNAV no compensados proc NA bajo -5°C o sobre 40°C. Autorización requerida de acuerdo a DAN 06-22. RF required. For uncompensated Baro VNAV systems procedure NA below -5°C or above 40°C. Authorization required according to DAN 06-22.
	RNP 0.15 DA 1820' (269')		RNP 0.3 DA 1870' (319')		
	ALSF-1	WO ALSF-1	ALSF-1	WO ALSF-1	
	A	B	C	D	
	0.8 Km	1.6 Km	0.8 Km	1.6 Km	

Veloc. Terrestre Kts	80	100	120	140	160	MNM ALTN RNP 0.3: VER PAG GEN 2.19 See pag 2.19 RQR AUTORIZACIÓN ESPECIAL PARA ACFT Y CREW SPECIAL ACFT AND AIRCREW AUTHORIZATION RQRD
Angulo DES 3° FPM	425'	531'	637'	743'	849'	
MAPt en DA						

DATA / SECCION AIS-WAY