

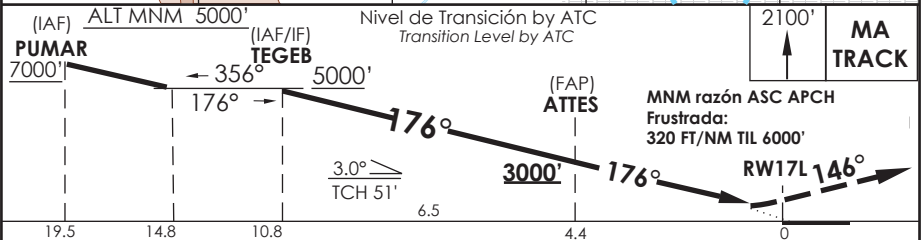
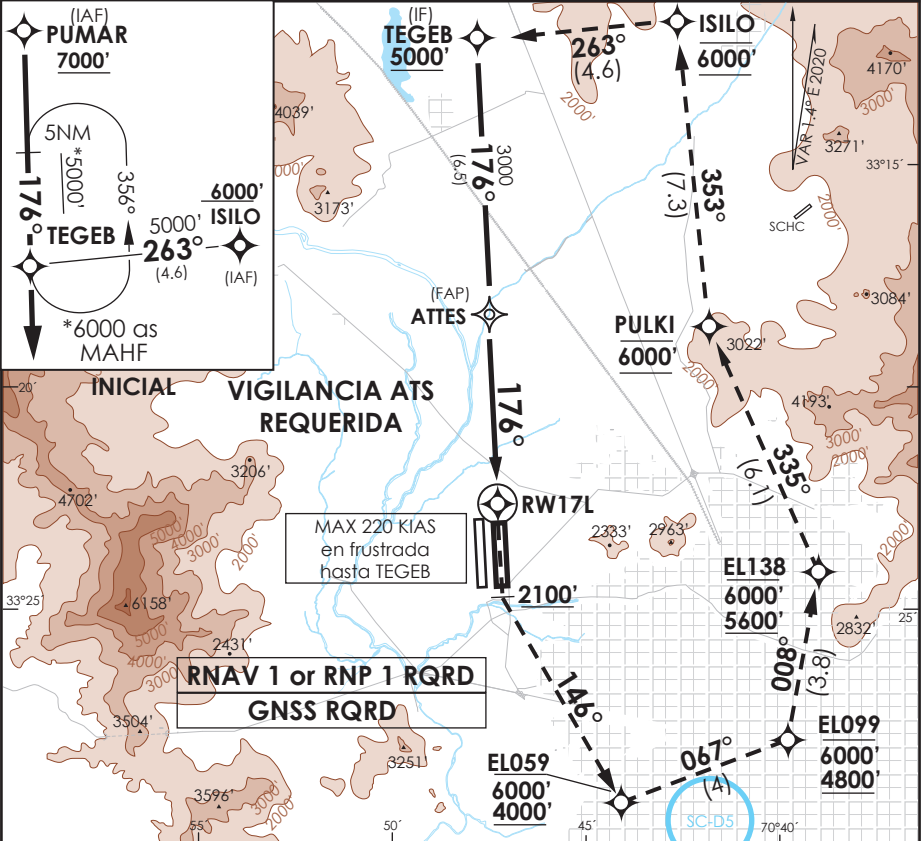
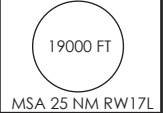
SANTIAGO - CHILE

RNAV (RNP) X RWY 17L

ATIS 132.1	SANTIAGO RADAR Santiago Radar 119.7/129.7	TORRE SANTIAGO Santiago Tower 118.1/118.35	CONTROL TERRESTRE GNDC W 122.5/122.6	Ground Control GNDC E 122.2/122.6
---------------	--	---	---	--------------------------------------

RNAV	FINAL APCH CRS 176°	MNM ALT ATTES 3000'	DA/H ver mínimos DA/H refer to minimums	AD Elev. 1555' THR 17L Elev. 1550'
-------------	-------------------------------	-------------------------------	--	---------------------------------------

APCH FRUSTRADA: ASC 2100' viraje izquierda para continuar via RNAV MA TR to TEGEB 6000', luego según AUTH ATC.
Missed Apch: Climb to 2100' left turn to continue via RNAV MA TR to TEGEB 6000', then according ATC clearance.



DIRECTO RWY 17L Straight in RWY 17L					RNP AR RWY 17L SCEL:	
CAT	RNP 0.15 DA 1830' (280')	RNP 0.3 DA 1880' (330')			Requiere RF. Para sistemas Baro VNAV no compensados proc NA bajo -5°C o sobre 40°C. Autorización requerida de acuerdo a DAN 06-22.	
	ALSF-2	WO ALSF-2	ALSF-2	WO ALSF-2	RF required. For uncompensated Baro VNAV systems procedure NA belows -5°C or above 40°C. Authorization required according to DAN 06-22	
A	0.8 Km	1.6 Km	0.8 Km	1.6 Km		
B						
C						
D						

Veloc. Terrestre Kts	80	100	120	140	160	MNM ALTN RNP 0.3: VER PAG GEN 2.19 See pag 2.19
Angulo DES 3° FPM	425'	531'	637'	743'	849'	RQR AUTORIZACIÓN ESPECIAL PARA ACFT Y TRIPULACIÓN
MAPt en DA						SPECIAL ACFT AND AIRCREW AUTHORIZATION RQRD

DATA / SECCION AIS-WAY