

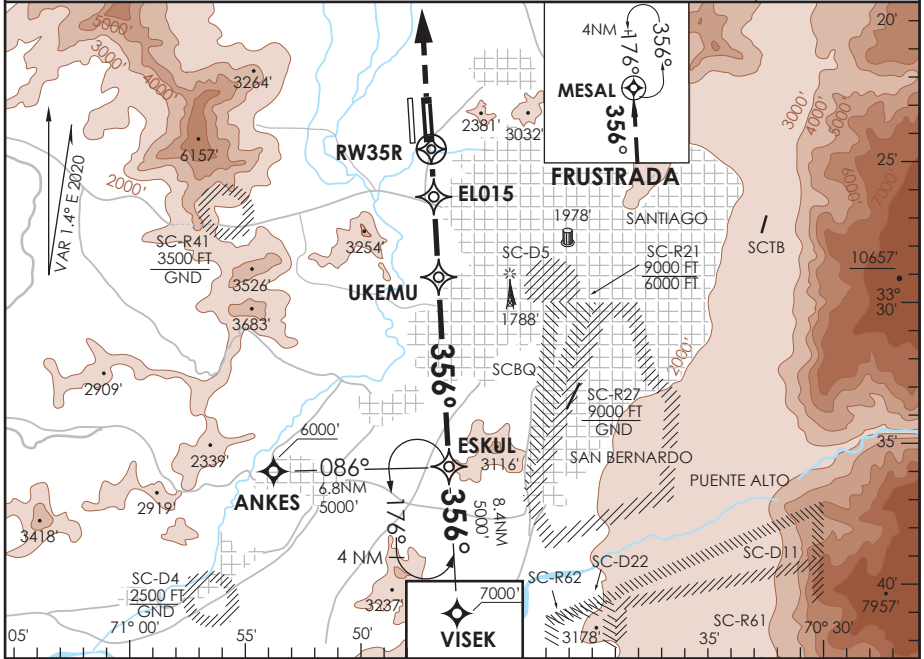
SANTIAGO - CHILE

RNAV (GNSS) Rwy 35R

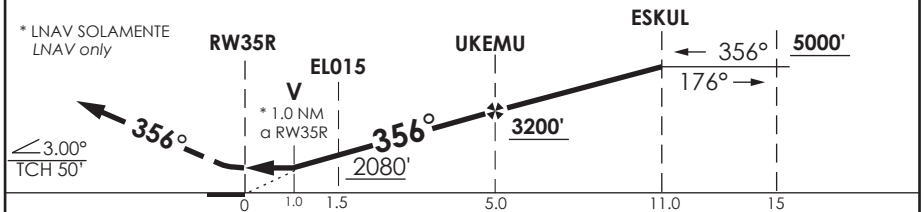
ATIS 132.1	SANTIAGO RADAR Santiago Radar 119.7/129.7	TORRE SANTIAGO Santiago Tower 118.1/118.35	CONTROL TERRESTRE GNDC W 122.5/122.6 GNDC E 122.2/122.6
---------------	--	---	---

RNAV	FINAL APCH CRS 356°	MNM ALT UKEMU 3200'	LNNAV/VNAV DA (H) 1840'(285')	AD Elev. 1555' THR 35R Elev. 1555'	19000 FT
-------------	-------------------------------	-------------------------------	---	---	----------

APCH FRUSTRADA: Ascenso a 5000' directo MESAL, ingrese a HLDG 176° izquierdo o según autorización ATC.
 Missed Apch: Climb to 5000' direct to MESAL, enter on HLDG 176° left or according to ATC clearance.
 MSA 25 NM RWY 35R



5000'	MESAL	Nivel de Transición by ATC Transition Level by ATC	ALT MNM 5000'
-------	-------	---	---------------



CATEGORIA	DIRECTO RWY 35R <i>Straight in RWY 35R</i>				CIRCULANDO Circling	ALTN Alternate Minimums
	LNNAV / VNAV DA 1840'(285')		LNNAV MDA 1920'(365')			
	SSALS	WO SSALS	SSALS	WO SSALS		
A			1.2 Km	1.6 Km	NA	VER PAG. GEN 2.19 See page GEN 2.19
B	1.2 Km	1.6 Km				
C			1.6 Km	2.0 Km		
D						

-Requiere aprobación RNP APCH. -RNP APCH approval RQRD.					Para sistemas Baro VNAV no compensados proc NA bajo -5°C o sobre 45°C. For uncompensated Baro VNAV systems procedure NA below -5°C or above 45°C.	
Veloc. Terrestre Kts	80	100	120	140	160	
Angulo DES 3° FPM	425'	531'	637'	743'	849'	
MAPt en RW35R						

DASA / SECCION AIS-MAP