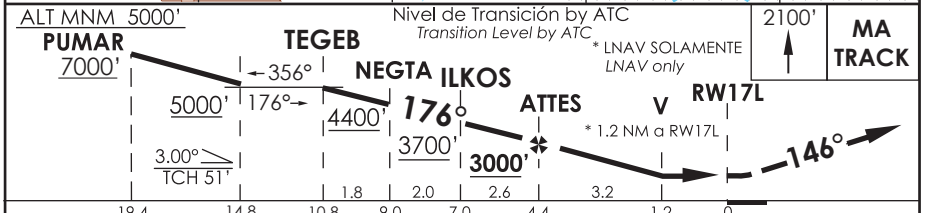
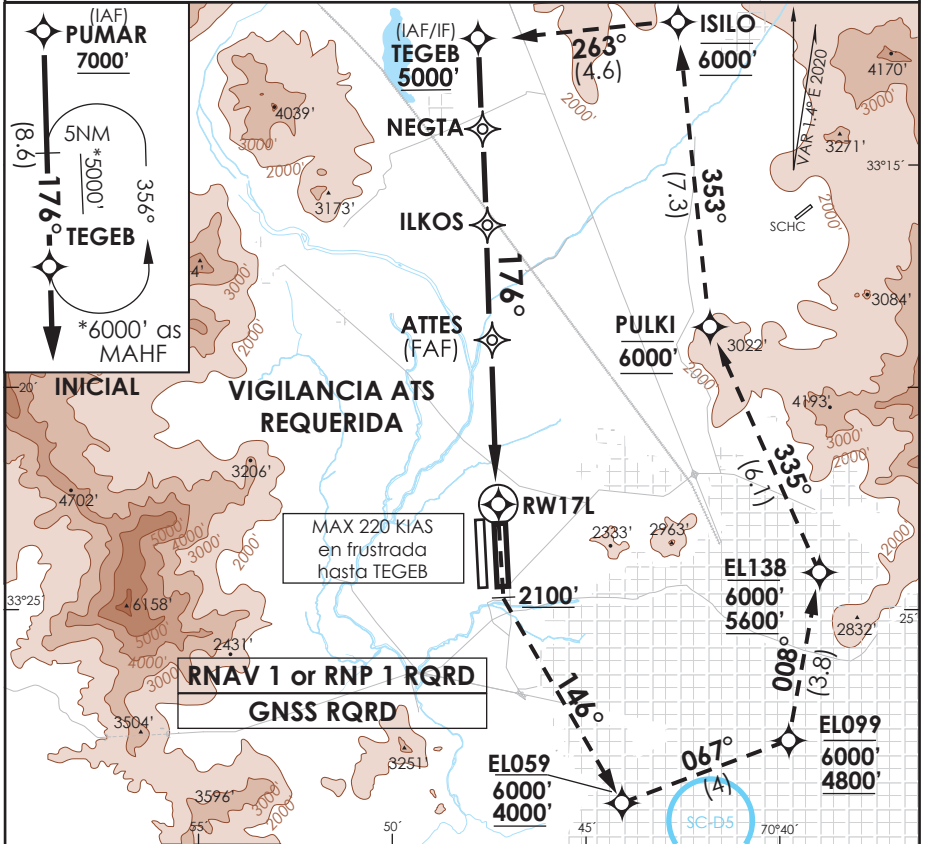


**SANTIAGO - CHILE**

**RNAV (GNSS) Y RWY 17L**

ATIS 132.1 Santiago Radar	SANTIAGO RADAR 119.7/129.7	TORRE SANTIAGO Santiago Tower 118.1/118.35	CONTROL TERRESTRE GNDC W 122.5/122.6	Ground Control GNDC E 122.2/122.6
<b>RNAV</b>	FINAL APCH CRS <b>176°</b>	MNM ALT ATTES <b>3000'</b>	LNAV/VNAV DA(H) <b>1880'(330')</b>	AD Elev. 1555' THR 17L Elev. 1550'
APCH FRUSTRADA: ASC 2100' viraje izquierda para continuar via RNAV MA TR to TEGEB 6000', luego según AUTH ATC. Missed Apch: Climb to 2100' left turn to continue via RNAV MA TR to TEGEB 6000', then according ATC clearance.				19000 FT MSA 25 NM RW17L



C A T	DIRECTO RWY 17L <i>Straight in RWY 17L</i>				CIRCULANDO Circling	ALTN Alternate Minimums	
	LNAV/VNAV DA 1880' (330')	LNAV MDA 1980' (430')	ALSF-2	WO ALSF-2			
A	1.2 Km	1.6 Km	1.2 Km	1.6 Km	NA	VER PAG. GEN 2.19 See page GEN 2.19	
B			2.0 Km	2.4 Km			
D							
-Requiere aprobación RNP APCH. -RNP APCH approval RQRD.			BARO/VNAV NA BAJO -5°C ó sobre 45°C BARO/VNAV not authorized below -5°C or ABV 45°C				
Veloc. Terrestre Kts		80	100	120	140	160	*MNM razón ASC APCH
Angulo DES 3° FPM		425'	531'	637'	743'	849'	Frustrada: 320FT/NM TIL 6000'
MAP en RW17L							