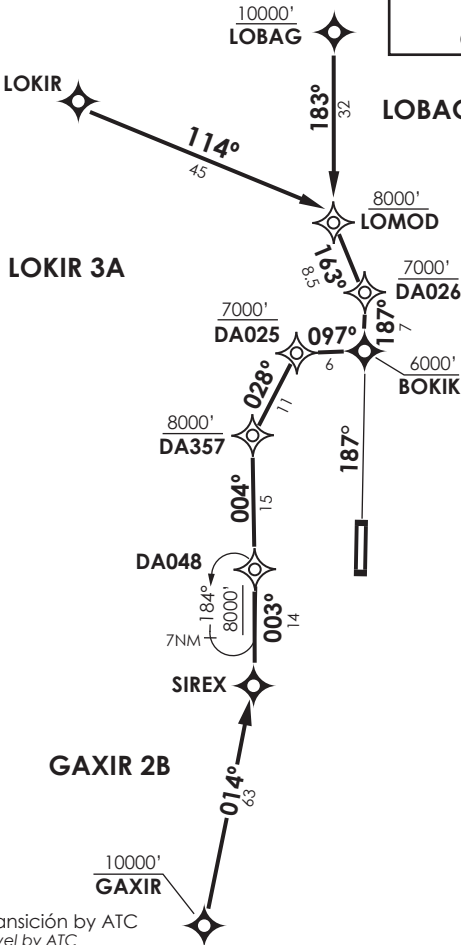


VAR 5.3°W 2020



IQUIQUE	
RDR	122.7
TWR	118.9

Notas

- 1.- Requiere aprobación RNAV1 o RNP1.
- 2.- Requiere GNSS.

Notes

- 1.- RNAV1 or RNP1 approval RQRD.
- 2.- GNSS required.

Nivel de Transición by ATC
 Transition Level by ATC

No se ajusta a escala / Not to scale

STAR GAXIR 2B / LOBAG 2B / LOKIR 3A RNAV

GAXIR 2B: Desde GAXIR directo a SIREX - DA048 - DA357 - DA025 - BOKIK para interceptar APCH a Rwy19. Cruzar GAXIR 10000 Ft o superior, DA357 8000 Ft o superior, DA025 7000 Ft o superior.

GAXIR 2B: From GAXIR direct to SIREX - DA048 - DA357 - DA025 - BOKIK to intercept APCH to Rwy19. Cross GAXIR at or above 10000 Ft, DA357 at or above 8000 Ft, DA025 at or above 7000 Ft.

LOBAG 2B: : Desde LOBAG directo a LOMOD-DA026-BOKIK para interceptar APCH Rwy19. Cruzar LOBAG 10000 Ft o superior, LOMOD 8000 Ft o superior, DA026 7000 Ft o superior.

LOBAG 2B: From LOBAG direct to LOMOD - DA026 - BOKIK to intercept APCH Rwy19. Cross LOBAG at or above 10000 Ft, LOMOD at or above 8000 Ft, DA026 at or above 7000 Ft.

LOKIR 3A: Desde LOKIR directo a LOMOD-DA026-BOKIK para interceptar APCH Rwy19. Cruzar LOMOD 8000 Ft o superior, DA026 7000 Ft o superior.

LOKIR 3A: From LOKIR direct to LOMOD - DA026 - BOKIK to intercept APCH Rwy19. Cross LOMOD at or above 8000 Ft, DA026 at or above 7000 Ft.