

VAR 6.2° W 2024

IQUIQUE

GNDC 121.7
 TWR 118.9
 RDR 122.7

Notas

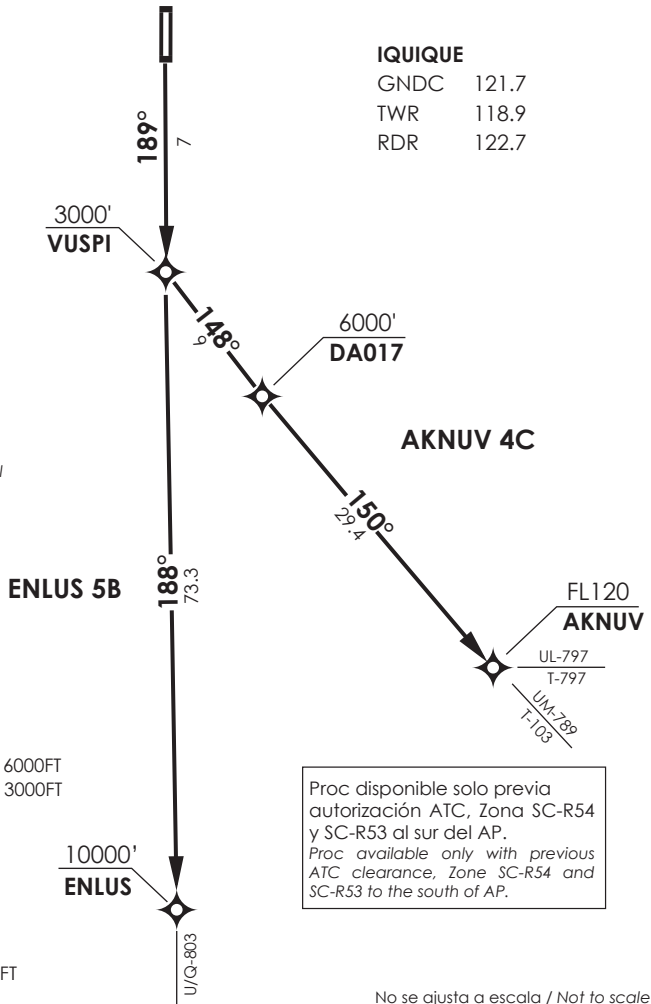
- 1.- Requiere aprobación RNAV 1 ó RNP1
- 2.- Requiere GNSS

Notes

- 1.- RNAV 1 or RNP 1 approval required
- 2.- GNSS required

MNM Razón ASC:

MNM Climb Rate:
 AKNUV 4C: 400 FT/NM TIL 6000FT
 ENLUS 5B : 400 FT/NM TIL 3000FT



Altitud de Transición 10000FT
 Transition Altitude 10000FT

No se ajusta a escala / Not to scale

AKNUV 4C / ENLUS 5B RNAV

DEP RWY19: Ascender en TR 189° directo a VUSPI, posterior,...

TAKE-OFF RWY19: Climb on TR 189° direct to VUSPI, then,...

AKNUV 4C: viraje izquierda a DA017-AKNUV para interceptar AWY. Cruzar VUSPI a 3000' o superior, DA017 a 6000' o superior, AKNUV FL120 o superior.

AKNUV 4C: turn left to AKNUV to intercept AWY. Cross VUSPI at or above 3000', DA017 at or above 6000', AKNUV at or above FL120.

ENLUS 5B: continuar en TR188° a ENLUS para interceptar AWY. Cruzar VUSPI a 3000' o superior, ENLUS 10000 Ft o superior.

ENLUS 5B: continue climbing on TR188° to ENLUS to intercept AWY. Cross VUSPI at or above 3000', ENLUS at or above 10000 Ft.