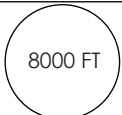
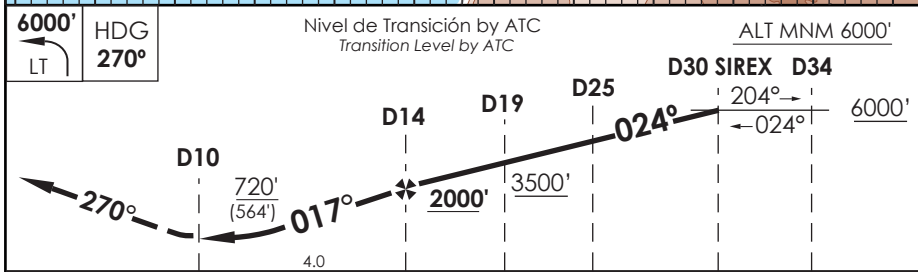
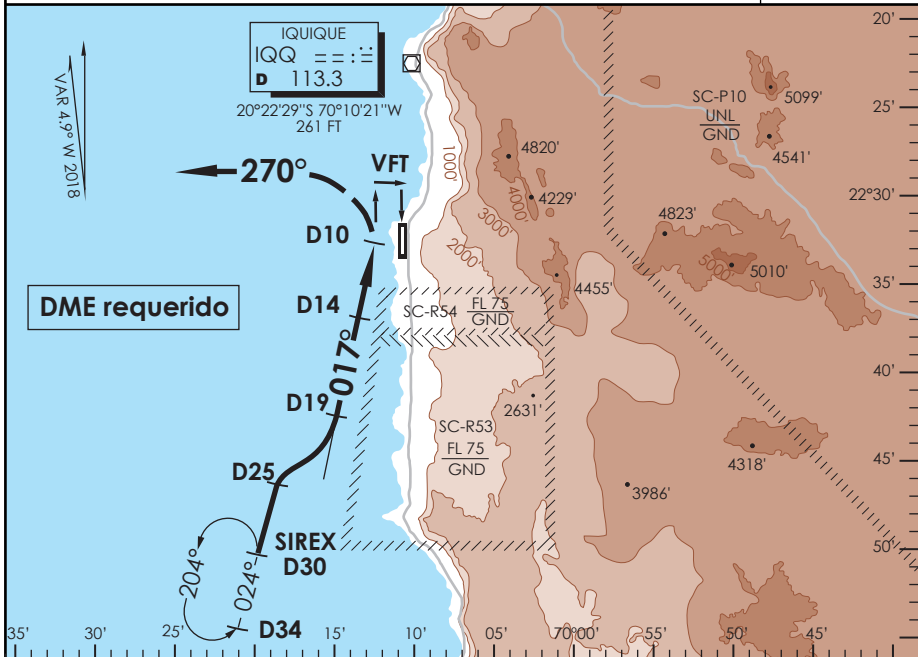


# AP. DIEGO ARACENA IQUIQUE - CHILE

SCDA IAC 3  
VOR A

APP IQUIQUE RADAR Iquique Radar Approach 122.7		TORRE IQUIQUE Iquique Tower 118.9		CONTROL TERRESTRE Ground Control 121.7	
VOR IQQ <b>113.3</b>	FINAL APCH CRS <b>017°</b>	MNM ALT D 14 <b>2000'</b>	MDA(H) <b>720'(564')</b>	AD Elev. <b>156'</b>	 8000 FT MSA 25 NM IQQ
APCH FRUSTRADA: Viraje izquierda HDG 270° en ascenso a 6000', luego según autorización ATC. Missed Apch: Left turn HDG 270° climbing to 6000', then according to ATC clearance.					



CATEGORIA	CIRCULANDO OESTE * Circling West		ALTN Alternate Minimums
	A	720' (564')	3.2 Km
B	---		
C	---		
D	800' (644') CEIL 900'		

\* LDG NGT RWY 01 NA WO PAPI  
Landing at night in RWY 01 not authorized without PAPI

Veloc. Terrestre Kts	80	100	120	140	160
FAF to MAPt 4.0 NM	3:00	2:24	2:00	1:43	1:30
MAPt en D10					

CAMBIO: MNM ALT / VAR  
Change: MNM ALT / VAR

DGAC AMDT 82

16 AGOSTO 2018

DASA / SECCION AS-MAP