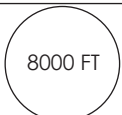


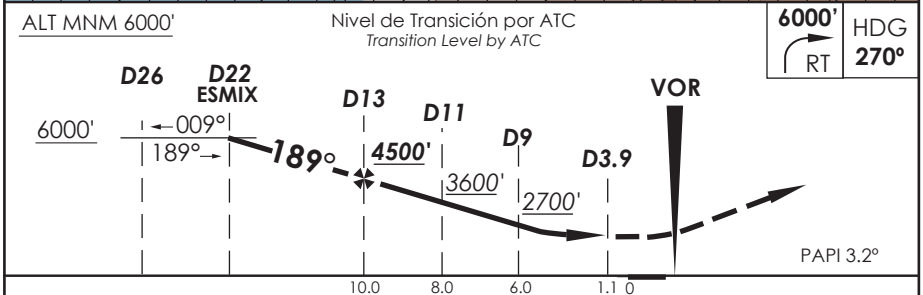
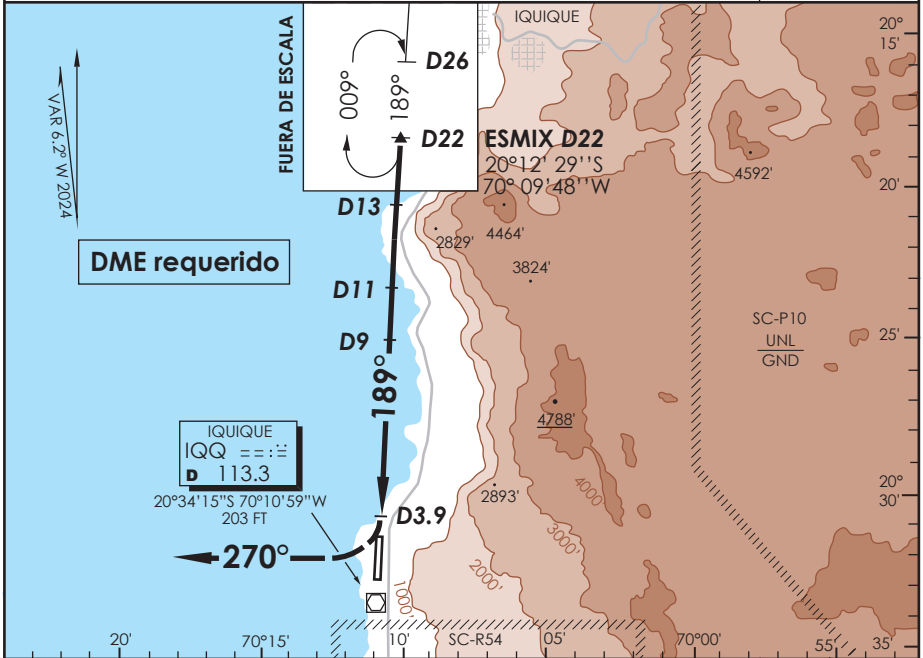
AP. DIEGO ARACENA  
**IQUIQUE - CHILE**

SCDA IAC 2  
**VOR Z Rwy 19**

APP IQUIQUE RADAR Iquique Radar Approach 122.7		TORRE IQUIQUE Iquique Tower 118.9		CONTROL TERRESTRE Ground Control 121.7	
VOR IQQ <b>113.3</b>	FINAL APCH CRS <b>189°</b>	MNM ALT D13 <b>4500'</b>	MDA(H) <b>600' (503')</b>	AD Elev. THR 19 Elev <b>156'</b>	 MSA 25 NM IQQ

APCH FRUSTRADA: Viraje derecha HDG 270° en ascenso a 6000', luego según autorización ATC.

Missed Apch: Right turn HDG 270° climbing to 6000', then according to ATC clearance.



C A T E G O R Í A	DIRECTO RWY 19 Straight in RWY 19		CIRCULANDO OESTE ** Circling West		ALTN Alternate Minimums
	* MDA <b>600' (503')</b>				
	ALSF-1	WO ALSF-1	760' (604') CEIL 800'	3.2 Km	VER PAG. GEN 2.19
A	1.6 Km	2.0 Km			
B	--	--	--	--	

* WO IQQ DME PROC NA Procedure not authorized without IQQ DME.					** LDG NGT RWY 01 NA WO PAPI Landing at night in RWY 01 not authorized without PAPI				
Veloc. Terrestre Kts	80	100	120	140	Tramo final: velocidad sobre 137 Kts excede los 1000 FPM				
Angulo DES 4.1° FPM	581'	726'	871'	1016'	Final segment: speed over 137 Kts, exceeds 1000 FPM				
FAF to MAP 8.9 NM	6:41	5:20	4:27	3:49					

CAMBIO: VAR  
 Change: VAR

DGAC AMDT 98

28 NOVIEMBRE 2024

DASA, SECCION AIS-MAP