

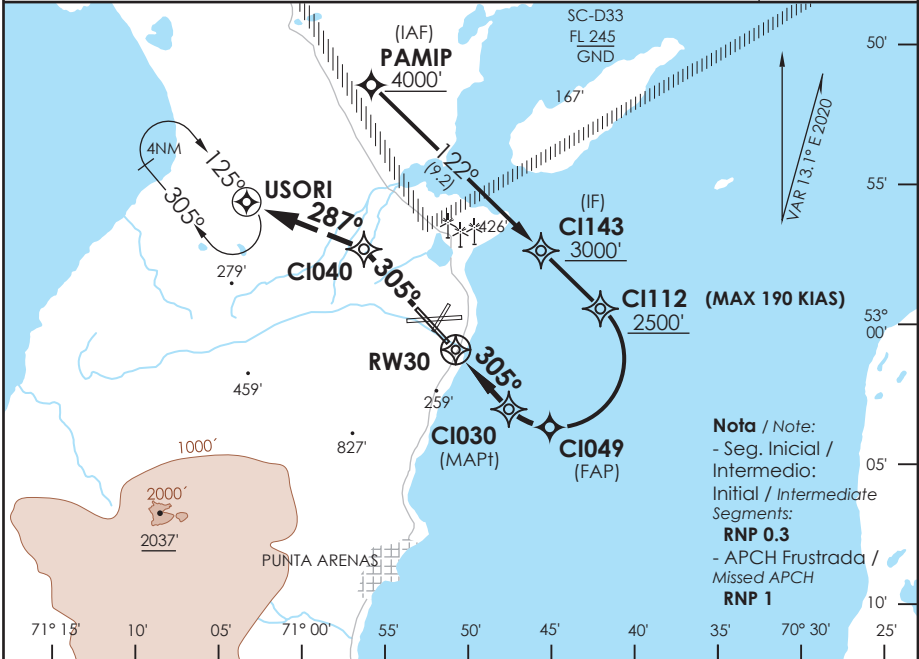
AP. C. IBAÑEZ DEL CAMPO PUNTA ARENAS - CHILE

SCCI IAC 16
RNAV (RNP) Z Rwy 30

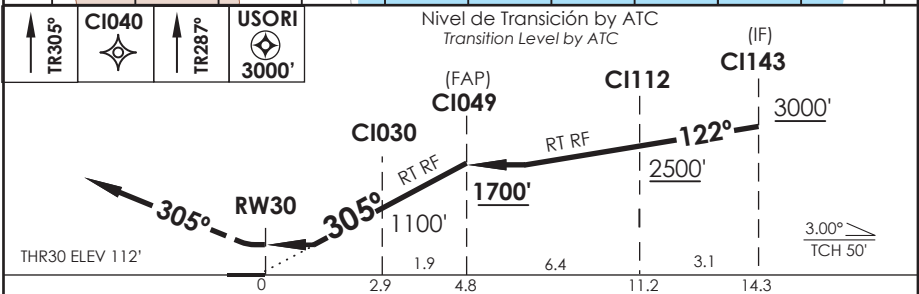
ACC PUNTA ARENAS Punta Arenas Center	123.9/128.1	TORRE PUNTA ARENAS Punta Arenas Tower	118.7	CONTROL TERRESTRE Ground Control	121.9
---	-------------	--	-------	-------------------------------------	-------

RNAV	FINAL APCH CRS 305°	MNM ALT ClO49 1700'	DA/H ver mínimos DA/H refer to minimums	AD Elev. THR 30 Elev.	139' 112'
-------------	-------------------------------	-------------------------------	--	--------------------------	--------------

APCH FRUSTRADA: Ascenso 3000' TR305° a ClO40, luego en TR287 a USORI, ingrese en HLDG 125° derecha o según autorización ATC.
Missed Apch: Climb to 3000' on TR305° to ClO40, then on TR287° to USORI, enter on HLDG 125° right or according to ATC clearance.



Nota / Note:
- Seg. Inicial / Intermedio:
Initial / Intermediate Segments:
RNP 0.3
- APCH Frustrada / Missed APCH
RNP 1



CATEGORÍA	DIRECTO RWY 30 Straight in RWY 30				RNP AR RWY 30 SCCI: Requiere RF. Para sistemas Baro VNAV no compensados proc NA bajo -10°C o sobre 43°C. Autorización requerida de acuerdo a DAN 06-22. RF required. For uncompensated Baro VNAV systems procedure NA below -10°C or above 43°C. Authorization required according to DAN 06-22.
	RNP 0.15 DA 370' (258')		RNP 0.3 DA 420' (308')		
	SSALF	WO SSALF	SSALF	WO SSALF	
A					
B	1.2 Km	1.6 Km	1.2 Km	1.6 Km	
C					
D					

Veloc. Terrestre Kts	80	100	120	140	160	MNM ALTN RNP 0.30: VER PAG GEN 2.19 See pag 2.19
Angulo DES 3.0° FPM	425'	531'	637'	743'	849'	RQR AUTORIZACIÓN ESPECIAL PARA ACFT Y CREW
MAPt en RW30						SPECIAL ACFT AND AIRCREW AUTHORIZATION RQRD