
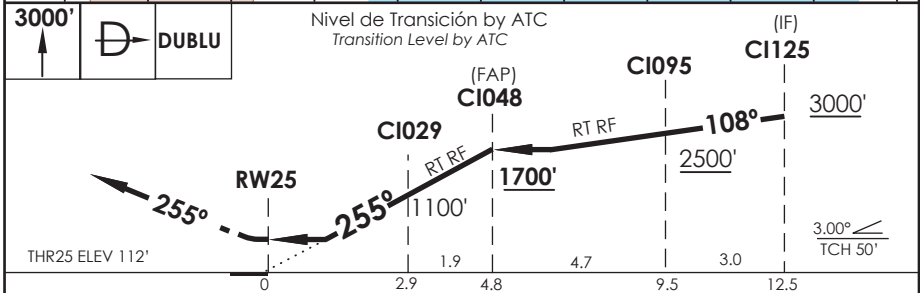
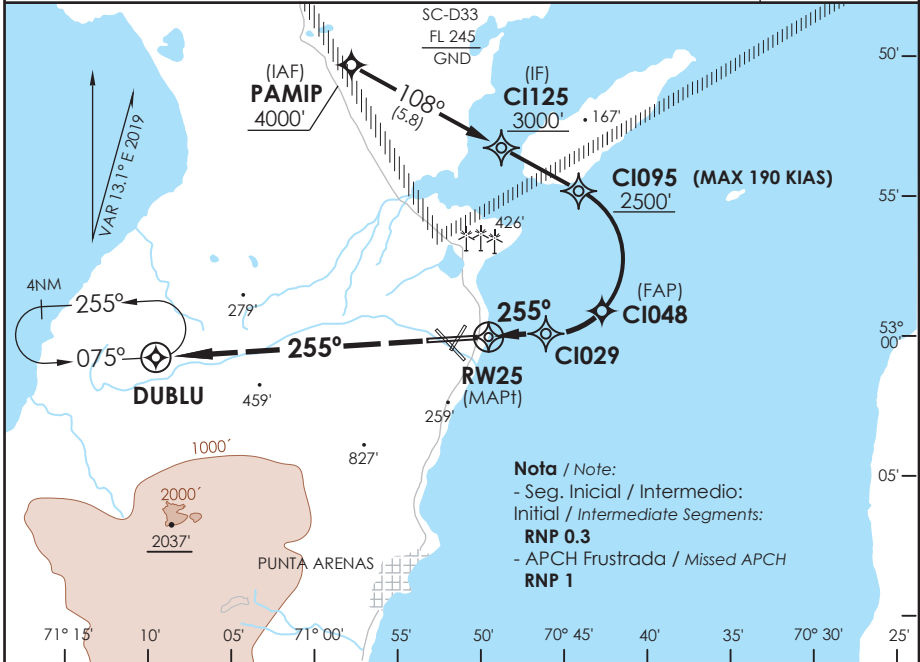


AP. C. IBAÑEZ DEL CAMPO PUNTA ARENAS - CHILE

SCCI IAC 15 RNAV (RNP) Z Rwy 25

ACC PUNTA ARENAS Punta Arenas Center	123.9/128.1	TORRE PUNTA ARENAS Punta Arenas Tower	118.7	CONTROL TERRESTRE Ground Control	121.9
RNAV	FINAL APCH CRS 255°	MNM ALT CI048 1700'	DA/H ver mínimos DA/H refer to minimums	AD Elev. THR 25 Elev.	139' 112'
APCH FRUSTRADA: Ascenso 3000' directo DUBLU, ingrese a HLDG 075° izquierda o según autorización ATC.					
Missed Apch: Climb to 3000' direct to DUBLU, enter on HLDG 075° left or according to ATC clearance.					



C A T E G O R Í A	DIRECTO RWY 25 Straight in RWY 25				RNP AR RWY 25 SCCI: Requiere RF. Para sistemas Baro VNAV no compensados proc NA bajo -10°C o sobre 43°C. Autorización requerida de acuerdo a DAN 06-22. RF required. For uncompensated Baro VNAV systems procedure NA below -10°C or above 43°C. Authorization required according to DAN 06-22.
	RNP 0.15 DA 370' (258')		RNP 0.3 DA 420' (308')		
	ALSF-1	WO ALSF-1	ALSF-1	WO ALSF-1	
A					
B	0.8 Km	1.6 Km	0.8 Km	1.6 Km	
C					
D					
Veloc. Terrestre Kts	80	100	120	140	160
Angulo DES 3,0° FPM	425'	531'	637'	743'	849'
MAPt en RW25	MNM ALTN RNP 0,30: VER PAG GEN 2.19 See pag 2.19 RQR AUTORIZACIÓN ESPECIAL PARA ACFT Y CREW SPECIAL ACFT AND AIRCREW AUTHORIZATION RQRD				

CAMBIO: WPTs/VAR
Change: WPTs/VAR

DGAC AMDT 83

15 AGOSTO 2019

DASA / SECCION AS-MAP