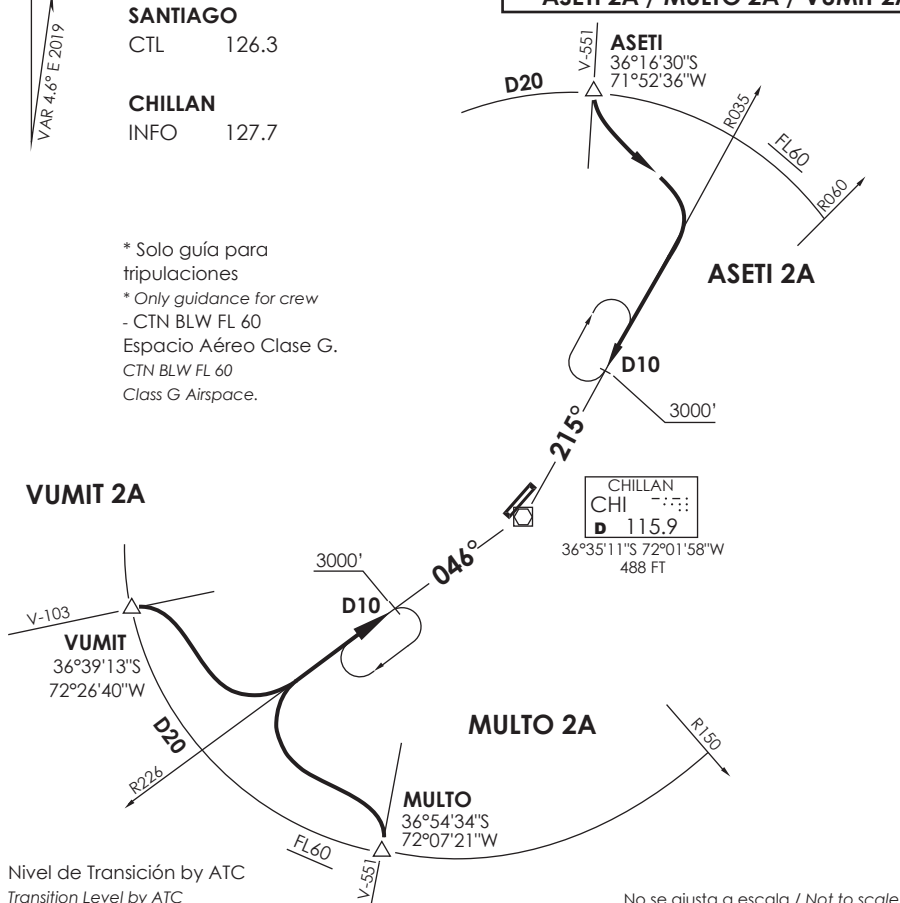


↑
 VAR 4,6° E 2019

SANTIAGO
 CTL 126.3

CHILLAN
 INFO 127.7

* Solo guía para tripulaciones
 * Only guidance for crew
 - CTN BLW FL 60
 Espacio Aéreo Clase G.
 CTN BLW FL 60
 Class G Airspace.



Nivel de Transición by ATC
 Transition Level by ATC

No se ajusta a escala / Not to scale

STAR ASETI 2A / MULTO 2A / VUMIT 2A

ASETI 2A: En ASETI INT abandonar AWY e interceptar R035 (TR215°) CHI VOR/DME. Cruzar D10 a 3000FT o superior.

ASETI 2A: At ASETI INT leave AWY and intercept R035 (TR215°) CHI VOR/DME. Cross D10 at or above 3000FT.

MULTO 2A: En MULTO INT abandonar AWY e interceptar R226 (TR046°) CHI VOR/DME. Cruzar D10 a 3000FT o superior.

MULTO 2A: At MULTO INT leave AWY and intercept R226 (TR046°) CHI VOR/DME. Cross D10 at or above 3000FT.

VUMIT 2A: En VUMIT INT abandonar AWY e interceptar R226 (TR046°) CHI VOR/DME. Cruzar D10 a 3000FT o superior.

VUMIT 2A: At VUMIT INT leave AWY and intercept R226 (TR046°) CHI VOR/DME. Cross D10 at or above 3000FT.

DASA / SECCION AIB-MAP