
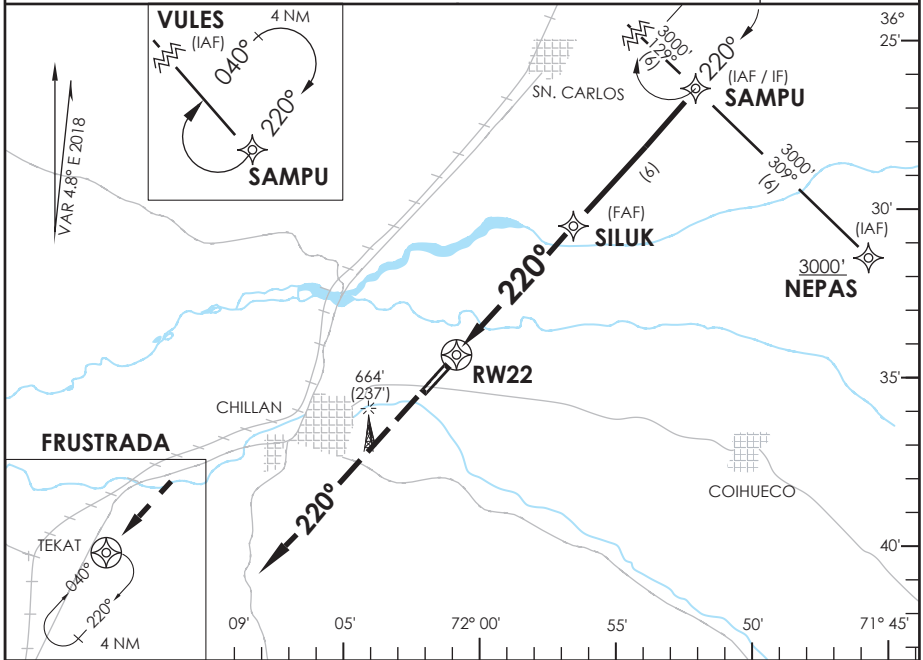



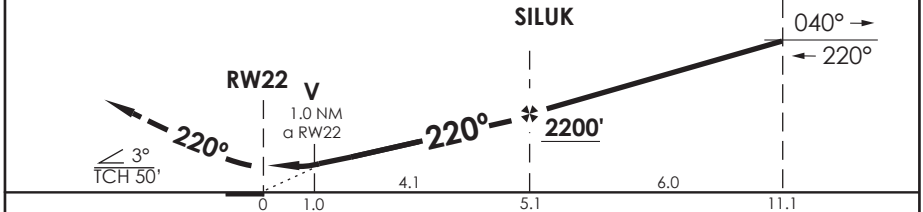
ACC SANTIAGO Santiago Center		126.3	CHILLAN INFORMACION Chillan Information		127.7	
RNAV	FINAL APCH CRS 220°	MNM ALT SILUK 2200'	LNAV MDA(H) 880'(381')	AD Elev. 499'	THR 22 Elev. 499'	

APCH FRUSTRADA: Ascenso 3000' directo TEKAT, ingrese a HLDG 040° derecho.
Missed Apch: Climb to 3000' direct to TEKAT, enter on HLDG 040° right.

MSA 25 NM RW22



3000' ↑		TEKAT
Nivel de Transición by AFIS Transition Level by AFIS		
ALT MNM 3000'		



CATEGORÍA	DIRECTO RWY 22 Straight in RWY 22		CIRCULANDO Circling	ALTN Alternate Minimums
	LNAV MDA 880' (381')			
A	1.6 Km		880' (381')	VER PAG. GEN 2.19
B			960' (461')	
C			2.4 Km	

-Requiere aprobación RNP APCH.
-RNP APCH approval RQRD.

Veloc. Terrestre Kts	80	100	120	140	160
Angulo DES 3,00°	425'	525'	631'	736'	841'
MAPt en RW22					