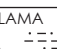


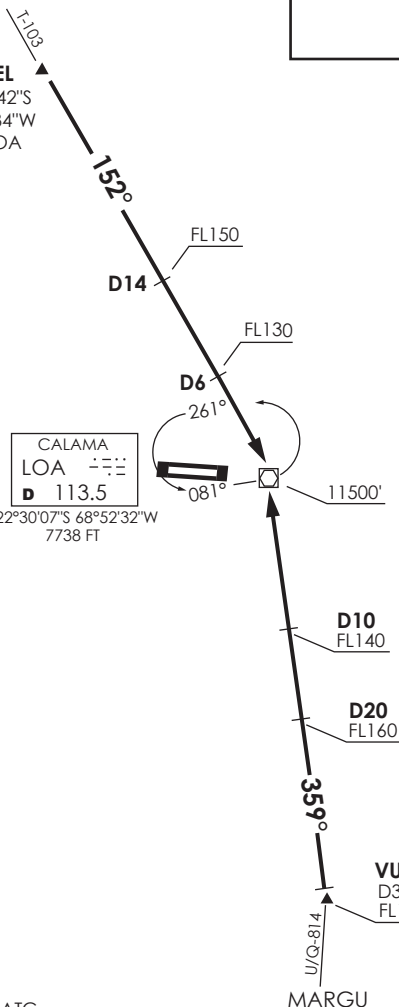
ANTOFAGASTA
 RDR 120.9

CALAMA
 TWR 118.7

VAR 5.5° W 2019

VUREL
 21°47'42"S
 69°21'34"W
 D50 LOA

CALAMA
 LOA 
 D 113.5
 22°30'07"S 68°52'32"W
 7738 FT



Nivel de Transición by ATC
 Transition Level by ATC

No se ajusta a escala / Not to scale

STAR VUDAP 2 / VUREL 1D

VUDAP 2: En VUDAP continuar en R179 (TR359°) directo a LOA VOR/DME. Cruzar VUDAP a FL190 o superior, D20 FL160 o superior, D10 FL140 o superior, LOA VOR 11500FT o superior, luego según autorización ATC.

VUDAP 2: At VUDAP continue on R179 (TR359°) direct to LOA VOR/DME. Cross VUDAP at or above FL190, D20 at or above FL160, D10 at or above FL140, LOA VOR at or above 11500FT, then according to ATC clearance.

VUREL 1D: Desde VUREL continuar en R332 (TR152°) directo a LOA VOR/DME. Cruzar D14 FL150 o superior, D6 FL130 o superior, LOA VOR 11500FT o superior, luego según autorización ATC.

VUREL 1D: From VUREL INT continue on R332 (TR152°) direct to LOA VOR/DME. Cross D14 at or above FL150, D6 at or above FL130, LOA VOR at or above 11500FT, then according to ATC clearance.